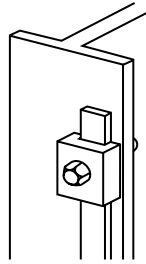


## Bonds and clamps

### 'B' bond

Maximum tape width	Bolt size	Conductor material	Weight each	Part no.
26mm	M10	Copper	0.12kg	<b>BN105</b>
26mm	M10	Aluminium	0.06kg	<b>BN005</b>
31mm	M10	Copper	0.15kg	<b>BN113</b>

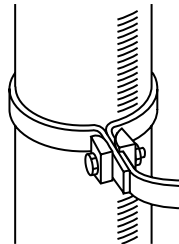
For bonding tape to steel structures.



### RWP bond

Maximum tape width	Bolt size	Conductor material	Weight each	Part no.
26mm	M10	Copper	0.12kg	<b>BN115</b>
26mm	M10	Aluminium	0.07kg	<b>BN010</b>

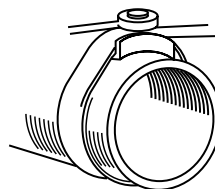
For bonding tape to rainwater pipes, handrails etc.



### Watermain bond

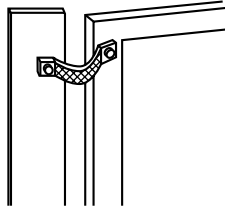
Maximum tape width	Conductor material	Weight each	Part no.
26mm	Copper	0.26kg	<b>BN120</b>

For bonding tape to large diameter pipes.



## Flexible copper braid bond

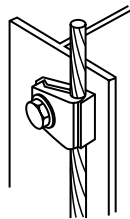
## Bonds and clamps



Overall braid dimensions	Hole size	Hole centres	Weight each	Part no.
25 x 3.5mm	11mm	200mm	0.09kg	<b>BN505</b>
25 x 3.5mm	11mm	400mm	0.15kg	<b>BN510</b>

Flexible copper braid for bonding gates, doors, fences etc. Equivalent cross sectional area 34.7mm<sup>2</sup>. Other materials, lengths and sections available as special items.

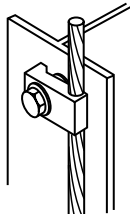
## Tower earth clamps



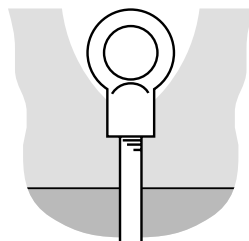
Conductor range	Channel thickness	Bolt size	Conductor material	Weight each	Part no.
16-70mm <sup>2</sup>	10mm	M10	Copper	0.13kg	<b>BN125*</b>
70-120mm <sup>2</sup>	10mm	M12	Copper	0.22kg	<b>BN130</b>
25-50mm <sup>2</sup>	10mm	M10	Copper	0.08kg	<b>BN300-FU*</b>
25-50mm <sup>2</sup>	10mm	M10	Aluminium	0.05kg	<b>BN305*</b>
120-185mm <sup>2</sup>	10mm	M12	Copper	0.30kg	<b>BN320</b>
185-240mm <sup>2</sup>	10mm	M12	Copper	0.40kg	<b>BN325</b>

For bonding copper cable or wire to steel structures.

\* Suitable for use with 8mm Ø solid circular conductor.



## Eyebolt



Nominal copperbond rod diameter	Weight each	Part no.
5/8"	0.52kg	<b>BT150</b>
3/4"	0.52kg	<b>BT160</b>

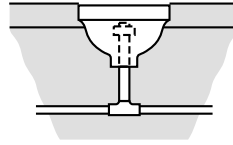
Screws direct onto a copperbond earth rod, offering an earth point for boats, trucks etc.

## Bonds and clamps

## Static earth receptacle

Conductor material	Weight each	Part no.
Copper	0.64kg	<b>RX005</b>

For setting into roadways or runways. Provides a static discharge point for aircraft, fuel tankers, etc.



## Square tape clamp

Conductor size	Conductor material	Weight each	Part no.
25 x 3mm	Copper	0.22kg	<b>CT105-FU</b>
25 x 6mm	Copper	0.41kg	<b>CT110</b>
31 x 3mm	Copper	0.35kg	<b>CT113</b>
50 x 6mm	Copper	0.97kg	<b>CT115</b>

For forming straight through, cross or tee joints in tape and bar.

