



A400P Installation Guide

Version 0.02

The A400P is a modular analog telephony interface product. It is designed to be hardware compatible with tdm400p. A400P must be used with FXO-100 or FXS-100 together to build a workable system. The FXO-100 and FXS-100 module is also pin to pin compatible with X100M and S100M. A400P sub-model with different pre-installed module configuration can be find in table-1

Table 1(A-400 PCI with different module configuration)

		FXO Module (FXO-100) Number				
		0	1	2	3	4
FXS Module (FXS-100) Number	0	A400P	A400P01	A400P02	A400P03	A400P04
	1	A400P10	A400P11	A400P12	A400P13	
	2	A400P20	A400P21	A400P22		
	3	A400P30	A400P31			
	4	A400P40				

Telephone Cable Installation:

The A400P have 4 RJ45 socket on the bracket. Each jack has a corresponding module install position on the mother-board. For example, if your A400P mother-board has a module installed at position-1, you should wire a telephone line to jack-1, etc.

Each RJ45 socket has 8 pins, A400P just use the middle 2 pin(4th and 5th pin) to connect to you 2-wire telephone line, other pins are not used.

Please see figure-1 and figure-2 for jack and telephone line wire.

Software Installation:

The A400P is fully compatible with TDM400P, It use wctdm as driver. So the software installation step is the same as TDM400P. Please consult TDM400P user's guide for software installation.

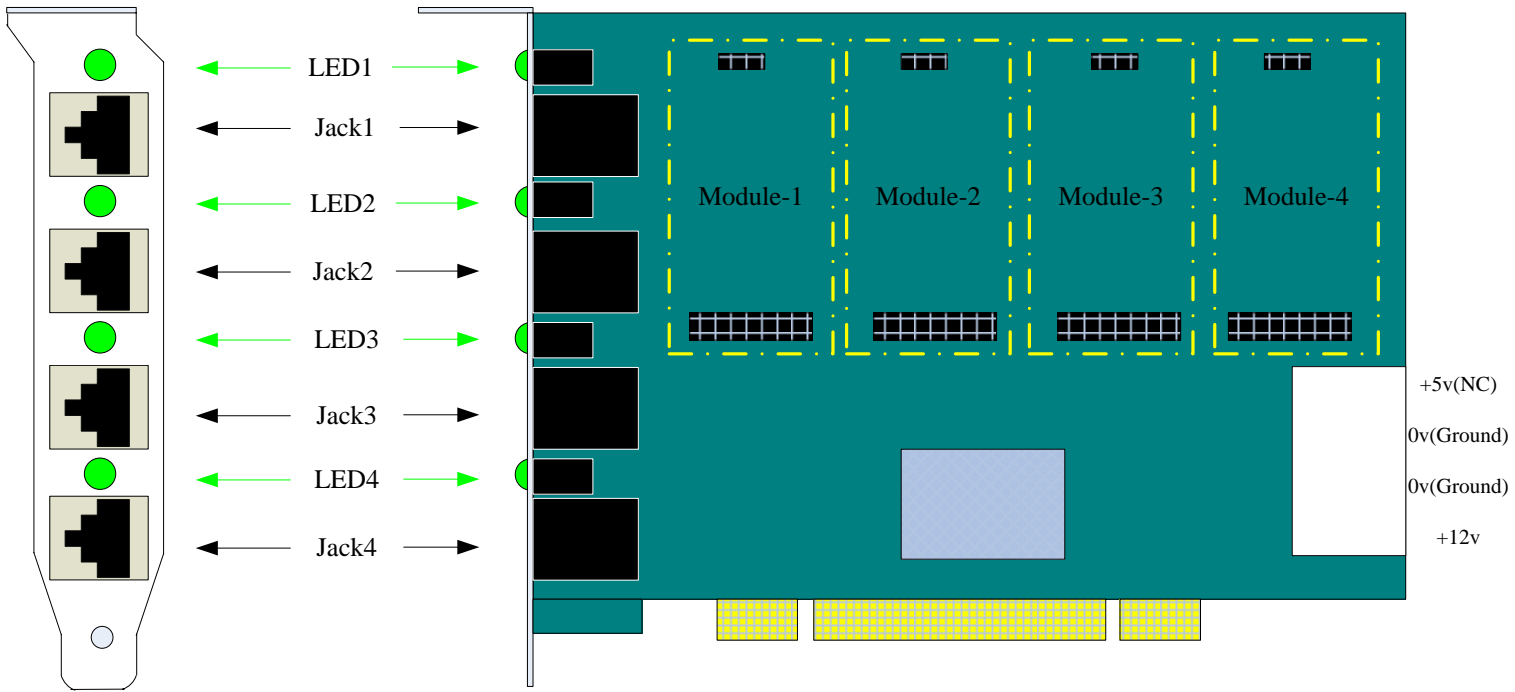


Figure 1: A400P Modules and Jacks/LEDs

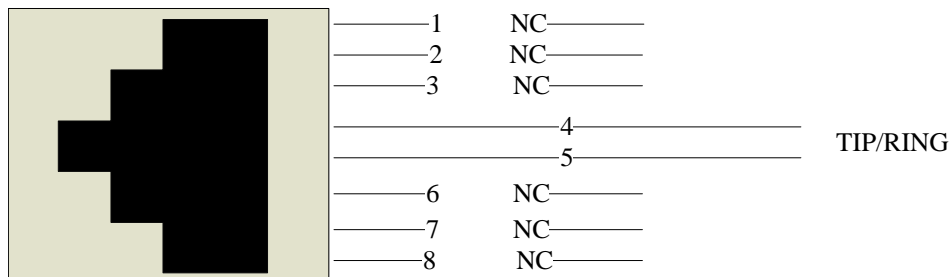


Figure 2: A400P phone jack wire

NC means not connect