

tube furnaces

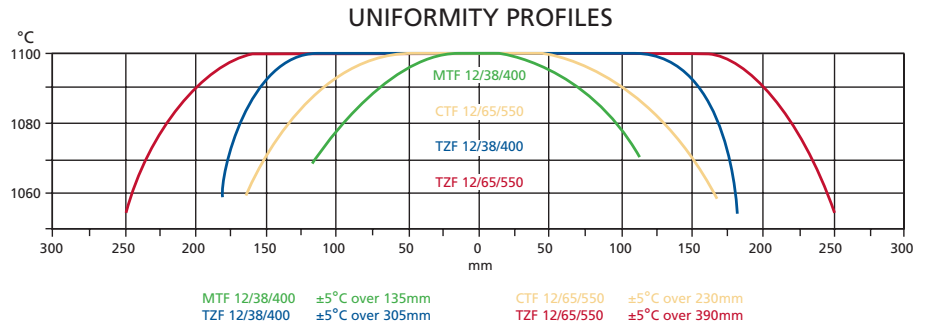
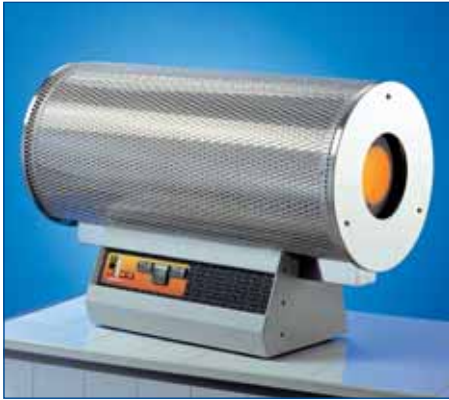


Table shows horizontal options

Wire embedded tube furnaces ~ three zone	GHC 12/450	GHC 12/600	GHC 12/750	GHC 12/900	GHC 12/1050	GHC 12/1200	HZS 12/600	HZS 12/900
Max. Temperature (°C)	1200	1200	1200	1200	1200	1200	1200	1200
Continuous Temperature (°C)	1100	1100	1100	1100	1100	1100	1100	1100
Heat up time (mins)	50	100	115	95	100	~		
Maximum o/d of Separate Worktube (to hold sample) (min 20mm)	170	170	170	170	170	170	110	110
Separate Worktube Length Required:								
heating in air (mm)	750	900	1050	1200	1350	1500	900	1200
heating with atmosphere (mm)	1050	1200	1350	1500	1650	1800	1200	1500
Heated Length (mm)	450	600	750	900	1050	1200	600	900
Overall Furnace Length (mm)	630	780	930	1080	1230	1380	750	1050
Horizontal Mounting on control box	✓	✓	✓	✓	✓	✓	✓	✓
Uniform length +/-5 (°C)	300	440	500	640	880	~	500	750
Thermocouple Type	N	N	N	N	N	N	N	N
Max .Power (W)	3100	3900	4600	5400	6200	7000	3000	4500
Holding Power (W)	1500	1800	2200	2800	2800	3100	~	1100
External Dimensions:								
H (mm)	672	672	672	672	672	672	350	350
W (mm)	676	827	976	1126	1276	1426	725	1050
D (mm)	468	468	468	468	468	468	410	410
Weight (kg)	6.5	40	51	55	~	~	40	65

- 1) Holding power is measured at 100°C below max. temperature, based on 240V supply, with an empty chamber.
- 2) Uniformity graphs are available on request, for most models.
- 3) Heat up time is measured at 100°C below max. temperature with an empty tube.



Thank you for reading this data sheet.

For pricing or for further information, please contact us at our UK Office, using the details below.



UK Office

Keison Products,

P.O. Box 2124, Chelmsford, Essex, CM1 3UP, England.

Tel: +44 (0)1245 600560

Fax: +44 (0)1245 600030

Email: sales@keison.co.uk

Please note - Product designs and specifications are subject to change without notice. The user is responsible for determining the suitability of this product.