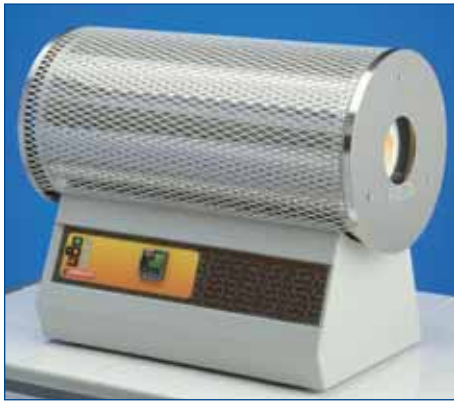


# tube furnaces

## Wire Wound Tube Furnaces to 1200°C



CTF 12/65/550



MTF 12/38/250/3216  
& MTF 10/25/130/301

The majority of these models utilise a resistance wire heating element, which is wound around the outside of a ceramic worktube making it an integral part of the heating element. If the tube is required to contain an atmosphere or is likely to be contaminated by spillage, an additional work tube should be used. The thermocouple is located in a protected position between the outside of the work tube and the heating element, allowing the full work tube diameter to be used and protects the thermocouple from mechanical damage.

Wire Wound Tube Furnaces ~ Single Zone	CTF 12/65/550	CTF 12/75/700	CTF 12/100/900
Max. Temperature (°C)	1200	1200	1200
Continuous Temperature (°C)	1100	1100	1100
Heat up time (mins)	45	45	90
Inside Diameter of Fixed Element Tube (mm)	65	75	100
Heated length (mm)	550	700	900
Overall Furnace length (mm)	600	750	950
Horizontal Mounting on Control Box	✓	✓	✓
Option of mounting: L stand / Wall bracket			
Blank base / Separated base	✓	✓	✓
Uniform length +/-5 (°C)	230	265	640
Thermocouple Type	N	N	N
Max. Power (W)	2000	3000	4500
Holding Power Requirement (W)	600	800	1000
External Dimensions :			
H (mm)	525	525	525
W (mm)	625	775	975
D (mm)	360	360	360
Weight (kg)	25	28	35

Wire Wound Tube Furnaces ~Single Zone	MTF 9/15/ 130	MTF 10/15/ 130	MTF 10/25/ 130	MTF 12/25/ 250	MTF 12/38/ 250	MTF 12/25/ 400	MTF 12/38/ 400	MTF 12/38/ 850
Max. Temperature (°C)	900	1000	1000	1200	1200	1200	1200	1200
Continuous Temperature (°C)	800	900	900	1100	1100	1100	1100	1100
Heat up time (mins)	7	5	10	15	25	30	25	-
Inside diameter of fixed element tube (mm)	15	15	25	25	38	25	38	38
Heated Length (mm)	130	130	130	250	250	400	400	850
Overall furnace Length (or width) (mm)	180	150	150	300	300	450	450	900
Horizontal Mounting on control box	✓	✓	✓	✓	✓	✓	✓	✓
Option of mounting: L stand / Wall bracket /								
Blank base / Separated base	8	3	3	3	3	3	3	-
Uniform length +/-5 (°C)	30	30	45	60	90	100	130	-
Thermocouple Type	K	K	K	N	N	N	N	-
Max. Power (W)	220	400	400	700	1000	1000	1500	2800
Holding Power (W)	100	100	100	200	300	200	300	-
External Dimensions:								
H (mm)	180	265	265	375	375	430	430	-
W (mm)	90	150	150	370	450	370	450	-
D (mm)	180	175	175	375	375	375	375	-
Weight (kg)	2	3	3	10	15	10	15	-



Thank you for reading this data sheet.

For pricing or for further information, please contact us at our UK Office, using the details below.



**UK Office**

**Keison Products,**

**P.O. Box 2124, Chelmsford, Essex, CM1 3UP, England.**

**Tel: +44 (0)1245 600560**

**Fax: +44 (0)1245 600030**

**Email: [sales@keison.co.uk](mailto:sales@keison.co.uk)**

Please note - Product designs and specifications are subject to change without notice. The user is responsible for determining the suitability of this product.