

## Electrothermal CMUV Heating Mantles

The Electrothermal CMUV Heating Mantles accepts a large range of flask and funnel sizes for added flexibility



Electrothermal CMUV Heating Mantles are available with and without controls.

- Element Temperature 450° C (842° F)
- Patented air flow through ventilation slots in base of the case ensure a low, cool temperature to the touch
- Coiled heating element, suspended within a thermal insulating cartridge, provides maximum heat transfer and support
- Heating element can be turned on or off
- Bottom outlet accommodates 60° funnels of various diameters
- Aluminum case stove painted
- Built-in electronic controller models

Stainless-steel screen on all CMUV models cover the heated element to protect you from shock hazards due to spills or flask breakage

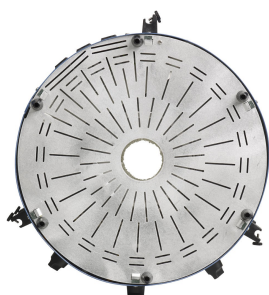
**Includes:** Three brackets for 1.3cm (1/2in.) support rods

**Warranty:** One year parts and labour

**Certifications:** CE, CSA

Cat. No.	Capacity	Electrical Requirements	With Controller
CMUV10/L	10L(2.6 gal)	230v 50/60Hz, 2000w	No
CMUV10/LX1	10L(2.6 gal)	115v 50/60Hz, 2000w	No
CMUV10/LX6	10L(2.6 gal)	230v 50/60Hz, 2000w EU Plug	No
CMUV10/CL	10L(2.6 gal)	230v 50/60Hz, 2000w	Yes
CMUV10/CLX1	10L(2.6 gal)	115v 50/60Hz, 2000w	Yes
CMUV10/CLX6	10L(2.6 gal)	230v 50/60Hz, 2000w EU Plug	Yes
CMUV12/L	12L (3.1 gal)	230v 50/60Hz, 2000w	No
CMUV12/LX1	12L (3.1 gal)	115v 50/60Hz, 2000w	No
CMUV12/LX6	12L (3.1 gal)	230v 50/60Hz, 2000w EU Plug	No
CMUV12/CL	12L (3.1 gal)	230v 50/60Hz, 2000w	Yes
CMUV12/CLX1	12L (3.1 gal)	115v 50/60Hz, 2000w	Yes
CMUV12/CLX6	12L (3.1 gal)	230v 50/60Hz, 2000w EU Plug	Yes
CMUV22/L	20 to 22L (5.2 to 5.8 gal)	230V 50/60Hz, 3000w	No
CMUV22/LX1	20 to 22L (5.2 to 5.8 gal)	115v 50/60Hz, 3000w	No
CMUV22/LX6	20 to 22L (5.2 to 5.8 gal)	230v 50/60Hz, 3000w EU Plug	No
CMUV22/CL	20 to 22L (5.2 to 5.8 gal)	230V 50/60Hz, 3000w	Yes
CMUV/CLX1	20 to 22L (5.2 to 5.8 gal)	115v 50/60Hz, 3000w	Yes
CMUV22/CLX6	20 to 22L (5.2 to 5.8 gal)	230v 50/60Hz, 3000w EU Plug	Yes

Specifications	
Max. Element Temperature	450° C (842° F)
No. of Circuits	3 (Top, Middle & Bottom)
Dimensions, D x W x H	48.5 x 30.0 x48.5 cm (19.09 x 11.8 x19.09 in.)





Thank you for reading this data sheet.

For pricing or for further information, please contact us at our UK Office, using the details below.



**UK Office**

**Keison Products,**

**P.O. Box 2124, Chelmsford, Essex, CM1 3UP, England.**

**Tel: +44 (0)330 088 0560**

**Fax: +44 (0)1245 808399**

**Email: [sales@keison.co.uk](mailto:sales@keison.co.uk)**

Please note - Product designs and specifications are subject to change without notice. The user is responsible for determining the suitability of this product.