



*Gas Measurement Instruments Ltd*

***PS500***

**Auto Bump / Calibration  
Station - User Handbook**

**Issue 2**

**08/09/2016**

**Part Number: 61254**

---

## LICENCE AGREEMENT

This Licence Agreement is your proof of licence. Please treat it as valuable property. Please note that this licence agreement supersedes the "statement of Copyright Restrictions".

### IMPORTANT - READ CAREFULLY

This is a legal and binding contract between you (either an individual or an entity), the end user and Gas Measurement Instruments Limited (GMI). By opening sealed software packages or by installing, copying, or otherwise using the '**PS500 Settings**' Auto Bump / Calibration Station application program (SOFTWARE), you agree to be bound by the terms of this agreement. If you do not agree to the terms of this agreement you should promptly return this package and accompanying items\* (including written materials, binders or containers) to GMI.

### CALIBRATION SOFTWARE LICENCE

1. GRANT OF LICENCE: The '**PS500 Settings**' Licence Agreement (Licence) permits concurrent use of the SOFTWARE on the number of computers for which this licence grants (that is: single user package licences one user; twenty user package licences twenty users). Additional SOFTWARE licences may be purchased for each additional concurrent user.

If you have acquired this SOFTWARE in a multiple licence pack, you may make the number of additional copies of the SOFTWARE authorised on the printed copy of the licence. You may also store or install a copy of the network SOFTWARE on a storage device, such as a network server, used only to install or run the SOFTWARE on your other computers over an internal network; however you must acquire and dedicate a licence for each separate computer on which the SOFTWARE is installed or run from the storage device. A licence for the software may not be shared or used concurrently on different computers.

This licence is granted for use on the GMI products and for use on one computer. If you require a second copy you must purchase that from GMI or its distributor. The documentation accompanying this software is essential for the correct and safe operation of the instruments.

This software is used on certified equipment which may be used in life critical applications. Only trained competent personnel should use this equipment and should be aware of the certification, calibration and Health and Safety issues associated with the product and its application.

2. COPYRIGHT: The SOFTWARE is owned by GMI and is protected by United Kingdom copyright laws and international treaty provisions. Therefore you must treat the SOFTWARE like any other copyrighted material (for example, a book or musical recording) except that you may either (a) make one copy of the SOFTWARE solely for backup or archival purposes, or (b) transfer the SOFTWARE to a single

hard disk provided you keep the original solely for backup and archival purposes. You may not copy the written materials accompanying the SOFTWARE.

**3. OTHER RESTRICTIONS:** You may not rent or lease the SOFTWARE, but you may transfer the SOFTWARE and accompanying written materials on a permanent basis to another individual. If you transfer the software, you must retain no copies and the recipient must agree to the terms of this agreement. You must not reverse engineer, decompile, or disassemble the SOFTWARE that is provided solely as executable programs (.EXE files) or dynamic link libraries (.DLL files). If the SOFTWARE is an update, any transfer must include the update and all prior versions.

### **30 DAY LIMITED WARRANTY**

If the product was purchased in the UK, simply return the full product in resaleable condition\* within 60 days of purchase to GMI, together with your original receipt or invoice, for a full refund. If this product was not purchased in the UK, you should return the full product\* to the place of purchase within 30 days of purchase for a full refund.

### **LIMITED WARRANTY**

The USB memory stick and Handbook that make up this software product are warranted by GMI to be free from defects in materials and workmanship for a period of 60 (sixty) days from the date you purchased this product. If you notify GMI within the warranty period of such defects in materials or workmanship, GMI will replace the defective USB memory stick or handbook. The sole remedy for breach of this warranty is limited to replacement of defective USB memory stick and handbook and / or refund of purchase price and does not include any other kinds of damage. Apart from the foregoing limited warranty, the software programs are provided "AS IS", without warranty of any kind, either expressed or implied. The entire risk as to the performance of the program is with the purchaser. GMI does not warrant that the operation of the programs will be uninterrupted or error free. GMI assumes no responsibility or liability of any kind for errors in the program or documentation or for the consequences of any such errors.

INCIDENTAL AND CONSEQUENTIAL DAMAGES CAUSED BY MALFUNCTION, DEFAULT, OR OTHERWISE WITH RESPECT TO BREACH OF THIS WARRANTY OR ANY OTHER EXPRESS OR IMPLIED WARRANTIES, INCLUDING THOSE OF MERCHANTABILITY AND FITNESS FOR A PARTICULAR PURPOSE, ARE NOT THE RESPONSIBILITY OF GMI AND ARE HEREBY EXCLUDED BOTH FOR PROPERTY AND, TO THE EXTENT NOT UNCONSCIONABLE, FOR PERSONAL INJURY DAMAGE.

The remedies described above are the exclusive remedies extended to you by GMI for any default, malfunction or failure of the product to conform with this warranty or otherwise for the breach of this warranty or any other warranty, whether expressed or implied. Should you have any questions concerning this agreement please contact the GMI sales department on +44 (0)141 812 3211.

\* If the product is not in resaleable condition, you will be charged a 20% restocking fee.

**COPYRIGHT**

This document is copyright of GMI and the information contained within is for use only with '**PS500 Settings**' Software. Reproduction, in whole or in part, including utilisation in machines capable of reproduction or retrieval without the written permission of GMI is prohibited. Reverse engineering is not permitted.

**TRADEMARK INFORMATION**

Windows XP™ and 7™ are registered trademarks or trademarks of the Microsoft Corporation in the United States and / or other countries.

**LIABILITY**

Every care has been taken in the preparation of this document, however, GMI do not accept any responsibility for errors or omissions and their consequences. Information in this document is subject to change without prior notice.

This document does not constitute a specification or basis for a contract.

Your statutory rights under UK law are not affected.



---

# CONTENTS

---

LICENCE AGREEMENT .....	i
IMPORTANT - READ CAREFULLY .....	i
CALIBRATION Software Licence .....	i
30 DAY LIMITED WARRANTY .....	ii
LIMITED WARRANTY .....	ii
COPYRIGHT .....	iii
TRADEMARK INFORMATION .....	iii
LIABILITY .....	iii
<hr/>	
INTRODUCTION .....	1-1
1.1 GENERAL DESCRIPTION .....	1-1
1.2 AUTO BUMP / CALIBRATION HARDWARE ... .....	1-5
1.3 ADDITIONAL ACCESSORIES .....	1-5
<hr/>	
CONNECT CALIBRATION GAS AND POWER SUPPLY .....	2-1
2.1 CONNECT CALIBRATION GAS .....	2-1

2.1.1 Compare Gas Cylinder Label with Software Configuration .....	2-2
2.1.2 Connect Gas Cylinder to ABC .....	2-4
2.1.3 Connect Air / Exhaust Tubing to ABC (if required) .....	2-5
2.2 CONNECT POWER SUPPLY .....	2-7
<hr/>	
SOFTWARE CONFIGURATION .....	3-1
3.1 VIEW / EDIT SOFTWARE CONFIGURATION .....	3-1
3.1.1 Bump Test .....	3-4
3.1.2 Calibration .....	3-6
3.1.3 Generate Settings File .....	3-8
3.2 TRANSFER UPDATED 'PS500 SETTINGS' to ABC .....	3-9
3.3 HELP OPTIONS .....	3-11
<hr/>	
BUMP / CALIBRATION OPERATION .....	4-1
4.1 PS500 SWITCH ON .....	4-1
4.2 INSERT INSTRUMENT IN AUTO BUMP / CALIBRATION STATION .....	4-2
4.3 BUMP / CALIBRATION OPERATION .....	4-6
4.4 REMOVE INSTRUMENT FROM ABC .....	4-7
4.5 ABC FAULT INDICATION .....	4-8



---

VIEW / PRINT TEST RESULTS .....	5-1
5.1 INTRODUCTION .....	5-1
5.2 DOWNLOAD TEST RESULTS .....	5-2
5.3 VIEW / PRINT TEST RESULTS.....	5-4
5.3.1 Test Result Files .....	5-5
5.3.2 Generated Certificates .....	5-9

---

FIT MOUNTING BRACKET.....	A-1
1. GENERAL DESCRIPTION .....	A-1
2. FIT MOUNTING BRACKET .....	A-2
3. ATTACH UNIT to WORKBENCH / DAISY CHAIN OPTION .....	A-3

---

INDEX.....	ix
------------	----



## INTRODUCTION



*Fig. 1-1 PS500 Auto Bump / Calibration Station*

### 1.1 GENERAL DESCRIPTION

The PS500 Auto Bump / Calibration Station provides the user with a quick, easy and reliable method of ensuring that PS500 instruments are correctly calibrated where company policy dictates.

Equipment does not have to be taken out of service for extended time periods while testing is undertaken.

The Auto Bump / Calibration Station (ABC) has 3 variants:

- Single gas unit (GMI part no. 61502) - 1 gas cylinder can be connected.
- Multi-gas unit (GMI part no. 61504) - up to 3 gases cylinders can be connected.
- Reactive gases ( $CL_2$  /  $NH_3$ ) multi-gas unit (GMI part no. 61504R) - up to 3 gases cylinders can be connected.

---

**Note: Throughout the user handbook the multi-gas variant (GMI part no. 61504) will be used to describe the Auto Bump / Calibration Station.**

---

The units can be used for:

- A Bump Test, approximately 60 seconds gas duration per cylinder, performs a full Bump Test of alarm set points and sensor response.
- A Calibration of the instrument, approximately 60 seconds gas duration per cylinder.

---

**Note: Gas duration is dependent on which PS500 model is being tested.**

---

The ABC can be free standing on a workbench, or alternatively, secured to the workbench individually or in a daisy chain fashion using the mounting bracket and screws supplied with the ABC. Refer to Appendix A for fitting instructions.

Power is supplied to the rear of the ABC via a 12V Universal Power Supply Unit (PSU), supplied with the ABC. A 12V Vehicle Power Supply is available as an accessory.

Gases are connected to the clearly marked inlet adaptors at the rear of the ABC. An integral pump automatically draws gas to the instrument for bump / calibration operation.

The user simply inserts the PS500 into the ABC, then closes the cover initiating the automatic testing process.

---

**Note: The PS500 MUST be switched on before inserting into the Auto Bump / Calibration Station.**

---

The ABC uses a traffic light system to display progress / result,

- i.e.
- LED 1 (Green) = ON (power)
  - LED 2 (Orange) = TEST (in progress)
  - LED 3 (Green) = PASS
  - LED 4 (Red) = FAIL

This provides the user with a clear indication of whether the PS500 meets the selected parameters.

GMI '**PS500 Settings**' Software is a Windows™ based 'stand alone' application that allows the user to configure / edit test parameters and view / print test results.

This software will run on any PC / Laptop with Windows XP™ or newer software installed. (.Net Framework 2.0 or higher may also be required on early Windows XP™ operating systems).

Both the ABC and the USB memory stick are supplied with necessary '**PS500 Settings**' software installed.

---

**Note: 'PS500 Settings' are not pre-configured with test parameters. A settings file MUST be generated and transferred to the ABC before testing / calibration can take place.**

---

The software test parameters are configured via PC or Laptop then the settings file transferred to the ABC using the USB memory stick supplied.

The software provides a full audit trail of tested instruments and the resulting data is retained in the station memory until downloaded to the USB memory stick, before being transferred (refer to note on page 5-1) to any compatible PC / Laptop for long term storage, review and / or printing.

A Calibration Certificate can also be generated automatically after successful completion of instrument testing.

A permanent PC connection is provided via mini-USB socket at the rear of the ABC. An Ethernet socket is also provided at the rear of the ABC to allow results to be gathered over a network. Both of these options require additional software, either the '**flexiCal Plus**' PC software package or the '**IMS**' network software package, both available from GMI.

---

**Note: PS500 Bump / Calibration Software is only one part of the requirements in terms of calibration and maintenance of a PS500 portable gas detector. Gases, delivery and trained personnel are all of equal or even greater importance.**

---

## 1.2 AUTO BUMP / CALIBRATION HARDWARE

The multi-gas Auto Bump / Calibration Stations (GMI Part No's. 61504 / 61504R) are provided with:

- 4mm (5/32in.) fittings (3 x gas and 1 x air).
- 6mm fitting (1 x exhaust).
- 12V Universal PSU.
- USB memory stick with GMI '**PS500 Settings**' software.

The single-gas Auto Bump / Calibration Station (GMI Part No. 61502) is provided with:

- 6mm fittings.
- 12V Universal PSU.
- USB memory stick with GMI '**PS500 Settings**' software.

## 1.3 ADDITIONAL ACCESSORIES

- Test Gas Cylinders - for a full list of gases, contact GMI or an authorised distributor.
- On Demand Gas Flow Regulator - GMI Part No. 99118.
- Tygon® tubing - GMI Part No. 66118.
- 1.0 metre Tygon® tubing complete with 6mm adaptor - GMI Part No. 64265.
- 0.6 metres reactive gas tubing - GMI Part No. 61540.





---

## CONNECT CALIBRATION GAS AND POWER SUPPLY

### 2.1 CONNECT CALIBRATION GAS

Gas is supplied to the Auto Bump / Calibration Station from Test Gas Cylinders via On Demand Gas Flow Regulators (GMI Part No. 99118) and Tygon® tubing (GMI Part No. 12712).



*Fig. 2-1 Calibration Gas Setup*

---

**Note:** For a comprehensive list of calibration accessories contact GMI or an authorised distributor.

---

## 2.1.1 Compare Gas Cylinder Label with Software Configuration

First of all, make sure that the cylinder is not older than the 'use by' date on the label illustrated in Fig. 2.2.

Make sure that the cylinder contains enough gas to complete the bump test / calibration. The pressure gauge on the Regulator Valve, after fitting, gives a clear indication of this.

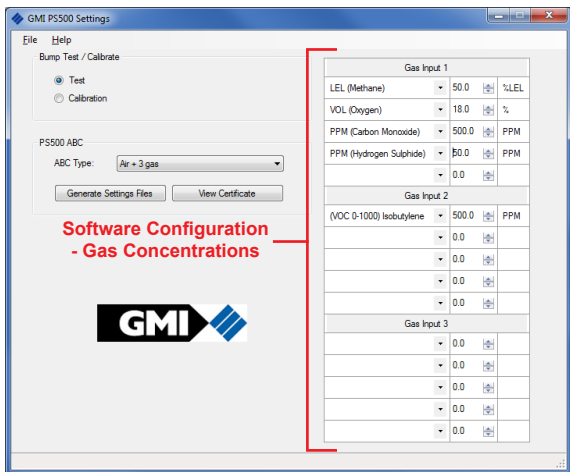
When applying gas to the instrument via the Auto Bump / Calibration Station, it is important that the gas concentrations listed on the cylinder label are consistent with the current software configuration downloaded from the USB memory stick to the unit.

As illustrated in Fig. 2.2, the cylinder gas concentrations can be easily found on the cylinder label.



*Fig. 2-2 Gas Cylinder Label*

The concentrations, illustrated in Fig. 2-2, should be consistent with the installed software configuration window, as illustrated in Fig. 2-3.



*Fig. 2-3 Software Configuration*

After comparing gas values between the Cylinder Gas Label and the Software Configuration, when consistent, proceed to the next paragraph.

If inconsistent, refer to Chapter 3 to update software configuration then download the updated configuration to the ABC.

---

**Note:** The Multi-gas ABC can have up to 3 gas inputs, therefore 3 gas cylinders labels and configurations to compare.

---

### 2.1.2 Connect Gas Cylinder to ABC

Connect the On Demand Regulator Valve to the gas cylinder by screwing the valve firmly into the top of the cylinder, as illustrated in Fig. 2-4. Fitting is simplified by pressing the valve on to the cylinder with one hand and turning the cylinder with the other. Care must be taken not to over-tighten the valve.



*Fig. 2-4 Attach Regulator Valve to Gas Cylinder*

Connect one of the supplied barbed adaptors to the end of the tubing, then push the barbed adaptor into one of the three 'Gas' inlet adaptors on the rear of the ABC, as illustrated in Fig. 2-5.



*Fig. 2-5 Connect Barbed Adaptor to ABC*

### 2.1.3 Connect Air / Exhaust Tubing to ABC (if required)

If the ABC is located in a poorly ventilated area, it is recommended that tubing is connected to both the 'Air' inlet and 'Exhaust' outlet adaptors on the rear face of the ABC, using barbed adaptors.

GMI recommend the use of an 'Air' in-line filter, also supplied with the unit. The (in-line filter) barbed adaptor is a push fit in the 'Air' inlet adaptor on the rear face of the ABC, as illustrated in Fig. 2-6.

Air inlet tubing, from the in-line filter, can be routed to the nearest window for the supply of fresh air.

Alternatively, compressed air can be used to supply inlet air.

---

**Note:** If the compressed air option is adopted, the in-line filter is not required.

---



*Fig. 2-6 Connect Air Tubing Adaptor to ABC*

The 'Exhaust' line, not illustrated, consists of a length of tubing and a barbed adaptor. The barbed adaptor is a push fit in the 'Exhaust' outlet adaptor on the rear face of the ABC. Exhaust tubing can be routed to the nearest window.

---

**Note:** Air inlet and exhaust tubing must be distanced from each other at end of tubing.

---

To remove the 'Gas', 'Air' and 'Exhaust' barbed adaptors from the ABC, depress the yellow and blue coloured collars, in turn to release, then withdraw the adaptor and tubing.

## 2.2 CONNECT POWER SUPPLY

Power is supplied to the ABC via a Universal AC Power Adaptor (12Vdc output) supplied with the unit.

The plug adaptor is located in the 12Vdc socket on the rear face of the ABC, as illustrated in Fig. 2-7.



*Fig. 2-7 Connect Power Supply to ABC*

Locate the Universal Power Adaptor in a mains supply wall socket then switch the mains power ON.

The 'ON' LED, on the front face of the unit, will illuminate green, as illustrated in Fig. 2-8.



*Fig. 2-8 Unit 'ON' Indication*

After 5 seconds all four LED's illuminate green, as illustrated in Fig. 2-9. This indicates that the unit is loading operating software and preparing for testing.



*Fig. 2-9 Unit Loading Software*

After a further 25 seconds three green LED's extinguish leaving only the 'ON' indication illuminated, as shown in Fig. 2-8. Next, three LED's coloured orange, orange and red illuminate briefly in sequence, indicating that GMI 'TEST' software has started.

Finally, the 'ON' indication is illuminated, as illustrated in Fig. 2-8, and the ABC is now ready for operation.

---

**Note:** The ABC can be powered ON indefinitely with no harm to the hardware.

---



---

## SOFTWARE CONFIGURATION

### 3.1 VIEW / EDIT SOFTWARE CONFIGURATION

The USB memory stick, supplied with the ABC, contains the 'PS500 Settings' software.

---

**Note:** 'PS500 Settings' are not pre-configured with test parameters. A settings file **MUST** be generated and transferred to the ABC before testing / calibration can take place.

---

To view 'PS500 Settings', insert the memory stick into an available USB port on your PC / Laptop.

The following screen is displayed on a Windows 7™ PC / Laptop.

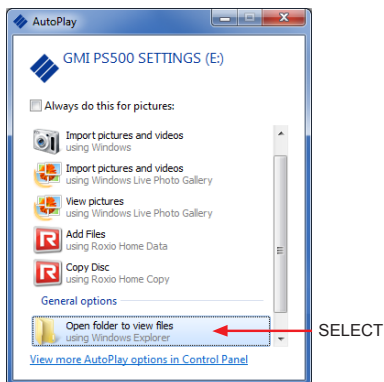


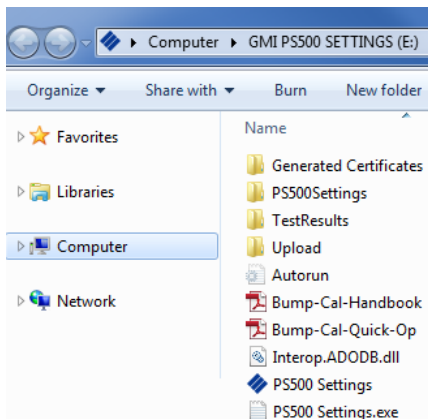
Fig. 3-1 PS500 Settings Windows 7™ Options

---

**Note:** All software instructions in the user handbook, are based on using Windows 7™.

---

Select 'Open folder to view files' to display the contents, as illustrated in Fig. 3-2.




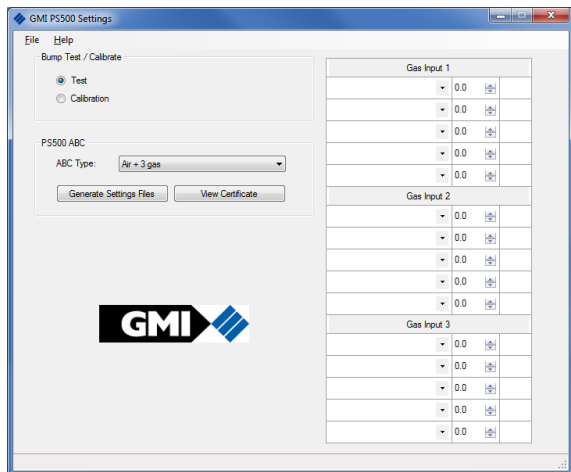
*Fig. 3-2 PS500 Settings Contents Folder*

---

**Note:** A short-cut to both the User Handbook and the Quick Operation Guide, can be accessed from this window. Adobe Acrobat Reader must be installed to view these files.

---

To view the test configuration settings, open the  **PS500 Settings** application from the list of items in Fig. 3-2.



*Fig. 3-3 Configuration Window (Multi Gas Set-up)*

There are two Bump Test / Calibrate options available:

- Test (i.e. bump test)
- Calibration

PS500 instruments can have many gas configurations. To incorporate the majority of gas configurations, there are two ABC type's available for test and calibration:

- Air + 1 gas. Single Gas Cylinder - Gas Input 1.
- Air + 3 gas. Multi Gas Cylinders - Gas Inputs 1, 2, 3.

---

**Note:** Each 'Gas Input' (cylinder) can contain up to 5 different types of gas.

---

### 3.1.1 Bump Test

This feature provides the user with the ability to perform a full bump test, testing alarm set points and sensor response.

When gas is applied, using Test Gas Cylinders, for a pre-set time, the audible and visual alarms will activate, and the unit will record a 'Pass' when the target values are attained.

---

**Note: Gas application times, alarm set points and target values are gas type dependent.**

---

To select / change the instrument gas type, ensure from the 'Bump Test / Calibrate' section, 'Test' is selected. Then, from the appropriate 'Gas Input' section, select the required gas type from the drop down list. The example in Fig. 3-4 shows Methane selected from 'Gas Input 1'.

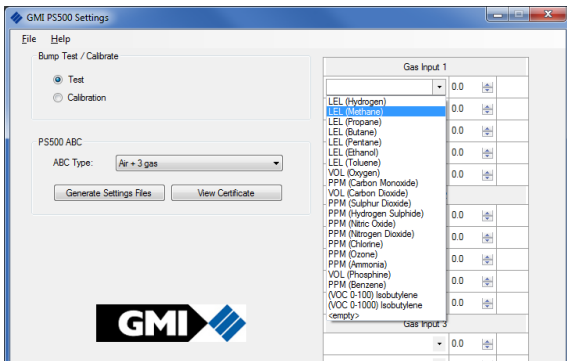
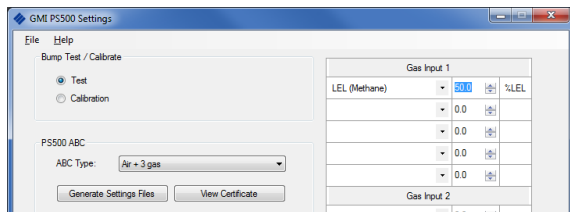


Fig. 3-4 Instrument Gas Type Selection

To enter / edit the gas concentration, highlight the gas value (0.0), then type in the new value (e.g. 50.0% LEL Methane), as illustrated in Fig. 3-5.

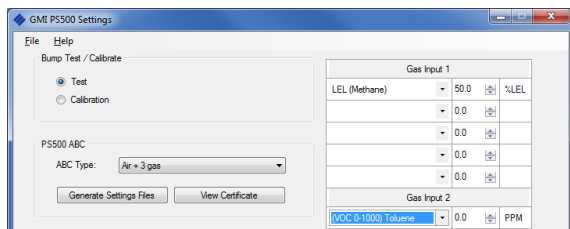


*Fig. 3-5 Gas Concentration*

**Note:** It is important that the 'Gas Concentration' value is consistent with the value displayed on the gas cylinder label.

Isobutylene is the recommended gas for tested or calibrating VOC 0-100 PPM and VOC 0 - 1000 PPM ranges.

If testing or calibrating VOC ranges with a gas other than Isobutylene, select the VOC range from the drop down list. Isobutylene can then be edited with your calibration gas of choice. E.g. Toluene in 'Gas Input 2', as illustrated in Fig. 3-6.



*Fig. 3-6 Editing VOC Gas Type*

### 3.1.2 Calibration

This feature provides the user with the option of performing a full calibration of the instrument.

When gas is applied, using Test Gas Cylinders, for a pre-set time, the audible and visual alarms will activate, and the unit will record a 'Pass' when the recalibrated target value is attained.

---

**Note: Gas application times, alarm set points and target values are gas type dependent.**

---

To select / change the instrument gas type, ensure from the 'Bump Test / Calibrate' section, 'Calibration' is selected. Then, from the appropriate 'Gas Input' section, select the required gas type from the drop down list. The example in Fig. 3-7 shows Methane selected from 'Gas Input 1'.

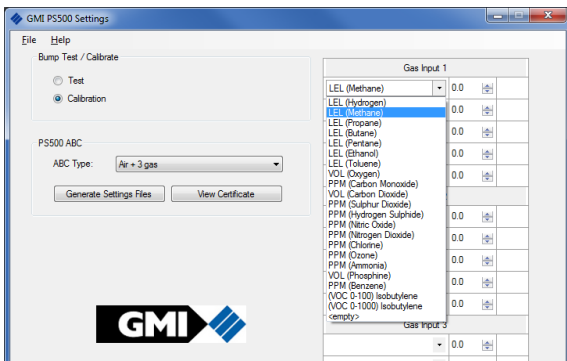
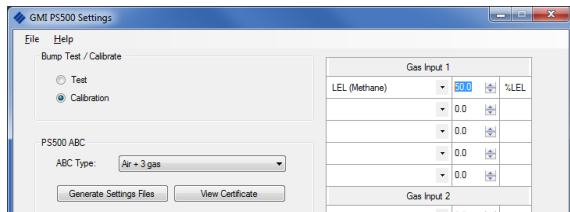


Fig. 3-7 Instrument Gas Type Selection

To enter / edit the gas concentration, highlight the gas value (0.0), then type in the new value (e.g. 50.0% LEL Methane), as illustrated in Fig. 3-8.



*Fig. 3-8 Gas Concentration*

---

**Note:** It is important that the 'Gas Concentration' value is consistent with the value displayed on the gas cylinder label.

---

### 3.1.3 Generate Settings File

The 'Generate Settings Files' button, illustrated in Fig. 3-9, allows any configuration changes to be saved to the USB memory stick, as updated settings file, then transferred to the ABC.

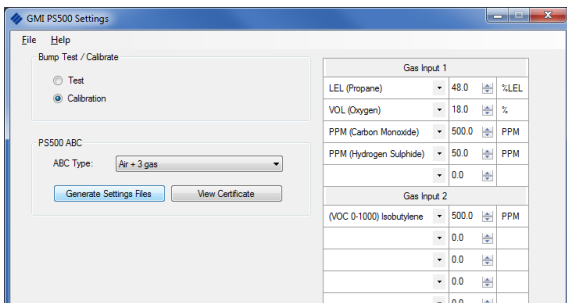


Fig. 3-9 Generate Setting Files

To save changes, select the 'Generate Settings File' button to save the data to the USB memory stick. The message illustrated in Fig. 3-10 will be displayed.

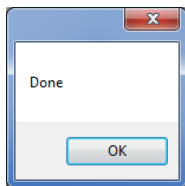


Fig. 3-10 New PS500 Settings File Generated



### 3.2 TRANSFER UPDATED 'PS500 SETTINGS' to ABC

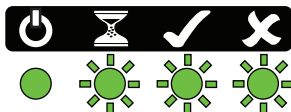
Make sure that the 12V power supply is connected to the ABC and switched ON, indicated by an illuminated green 'ON' LED on the front of the ABC and that the ABC has completed start-up.

Remove USB memory stick from the PC / Laptop then insert into the USB port on the front face of the ABC, as illustrated in Fig. 3-11.



*Fig. 3-11 Auto Bump / Calibration Station USB Port*

When the USB is inserted in the ABC, the updated settings file is automatically transferred to the ABC, indicated by three flashing green LED's, as illustrated in Fig. 3-12.



*Fig. 3-12 Transferring Data to Unit*

On completion of uploading the updated settings file, the three LED's stop flashing, as illustrated in Fig. 3-13, indicating the upload is complete.



*Fig. 3-13 Upload Complete*

Next, LED's coloured orange, orange and red illuminate, as illustrated in Fig. 3-14 and GMI 'TEST' software has re-started.



*Fig. 3-14 Test Software Re-started*

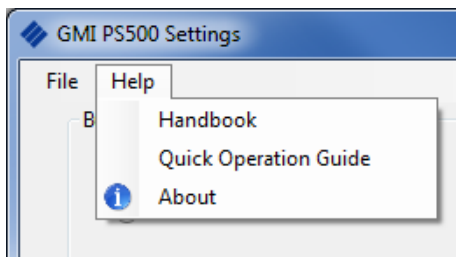
Next, the three (orange, orange and red) LED's extinguish, leaving only the green 'ON' LED illuminated.

The Auto Bump / Calibration Station has stored the new data and is ready for use.

The USB memory stick can now be removed.

### 3.3 HELP OPTIONS

The '**PS500 Settings**' software contains a Help menu, as illustrated in Fig. 3-15.



*Fig. 3-15 Help Menu*

The menu has the following options available:

- **Handbook** - select to open the User Handbook (in PDF format).
- **Quick Operation Guide** - select to open the Quick Operation Guide (in PDF format).
- **About** - contains information relating to the owner, name and version of the application.

---

**Note:** **Adobe Acrobat Reader must be installed to view the Handbook and Quick Operation Guide.**

---



## BUMP / CALIBRATION OPERATION

### 4.1 PS500 SWITCH ON

The PS500 must be switched ON, before inserting into the Auto Bump / Calibration Station.

To switch ON, press and hold the blue button, as illustrated in Fig. 4-1.



*Fig. 4-1 PS500 Switch ON*

The instrument will switch on, run through the warm-up sequence and show the normal operating display, as the example illustrates in Fig. 4-2.



*Fig. 4-2 Normal Operating Display*

## 4.2 INSERT INSTRUMENT IN AUTO BUMP / CALIBRATION STATION

**Note:** Before use, ensure the ABC is ready for operation and the appropriate 'PS500 Settings' file has been transferred.

To release the front cover of the Auto Bump / Calibration Station, press the cover latch downwards, as illustrated in Fig. 4-3, then open the cover fully.



*Fig. 4-3 Open Front Cover*

Locate the instrument inlet connector over the gas supply nozzle in the unit, as illustrated in Fig. 4-4.



*Fig. 4-4 Locate Instrument*

Push the instrument rearwards until correctly seated in the station recess, as illustrated in Fig. 4-5.



*Fig. 4-5 Instrument Correctly Seated*

---

**Note:** Ensure the instrument is switched ON before closing the front cover.

---



Close the front cover of the Auto Bump / Calibration Station, by using both thumbs. Press the lower centre of the cover firmly, as illustrated in Fig. 4-6, until the latch 'clicks' shut.



*Fig. 4-6 Close Front Cover*

### 4.3 BUMP / CALIBRATION OPERATION

The Bump / Calibration operation starts up automatically following the locking of the unit cover latch.

After the cover latch 'clicks' shut, the orange 'Test in Progress' LED illuminates, as illustrated in Fig. 4-7.



*Fig. 4-7 Test in Progress*

During testing, when the alarm set points are reached, the instrument's audible and visual alarms will activate for a short period of time.

On test completion the instrument will switch OFF.

A test 'PASS' is indicated by a green LED, as illustrated in Fig. 4-8.



*Fig. 4-8 PASS Indication*

Alternatively, a test 'FAIL' is indicated by a red LED, as illustrated in Fig. 4-9.



*Fig. 4-9 FAIL Indication*

Next, the unit pump switches OFF and the instrument can be safely removed.

The test result indication is displayed until the door is opened.

All test results are stored in the ABC memory and can be accessed as detailed in Chapter 5.

#### 4.4 REMOVE INSTRUMENT FROM ABC

To release the front cover of the Auto Bump / Calibration Station, press the cover latch downwards, as illustrated in Fig. 4-10, then open the cover fully.



*Fig. 4-10 Open Front Cover*

---

**CAUTION: Do not overextend angle of extraction as damage to the gas supply nozzle could result.**

---

Grasp the instrument, lean the top of instrument away from the ABC, then carefully lift away from gas supply nozzle, as illustrated in Fig. 4-11.



*Fig. 4-11 Lift Instrument Clear of Gas Nozzle*

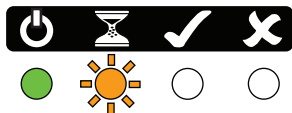
Close the front cover of the ABC then, using both thumbs, press the lower centre of the cover firmly until the latch 'clicks' shut.

## **4.5 ABC FAULT INDICATION**

Fault detection indication is via the LED's on the front face of the unit, as follows:

### Test Error

A 'Test Error' is indicated by an orange flashing LED, as illustrated in Fig. 4-12.



*Fig. 4-12 Test Error*

If this fault occurs, it is recommended that the USB memory stick is inserted into a PC / Laptop and re-configured, as detailed in Chapter 4.

On completion, the data should then be transferred to the Auto Bump / Calibration Station.

### Pump Fault

A 'Pump Fault' is indicated by orange and red flashing LED's, as illustrated in Fig. 4-13.



*Fig. 4-13 Pump Fault*

If this fault occurs, it is recommended that the tubing from the gas cylinder to the Auto Bump / Calibration Station inlet adaptor is inspected for possible restriction or blockage.

If this action does not clear the fault, remove the instrument from the unit and inspect the instrument for possible flow fault. If this does not clear the fault, contact GMI.



---

## VIEW / PRINT TEST RESULTS

### 5.1 INTRODUCTION

The test results of all instruments that have been Bump Tested / Calibrated in the unit are stored in the unit internal memory.

The USB memory stick (Part No. 61251), containing '**PS500 Settings**' software and supplied with the Auto Bump / Calibration Station, must be used to download this data.



*Fig. 5-1 Downloading Memory Stick*

The memory stick can be used to download data from several GMI Auto Bump / Calibration Stations, if required.

The data identifies the serial number of the unit used to download data from each instrument, bump tested or calibrated.

---

**Note:** It is recommended a backup of the test results are made, on a PC / Laptop, on a regular basis; in case of the USB memory stick being misplaced.

---

## 5.2 DOWNLOAD TEST RESULTS

Make sure that the Auto Bump / Calibration Station is connected to mains power supply, switched ON and start-up is completed.

This is indicated by an illuminated green 'ON' LED, on the front face of the unit, as illustrated in Fig. 5-2.



*Fig. 5-2 Unit 'ON' Indication*

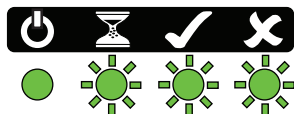
Insert USB memory stick into the USB port on the front face of the unit, as illustrated in Fig. 5-3.



*Fig. 5-3 Auto Bump / Calibration Station USB Port*



When the USB memory stick is inserted in the unit, all stored test results are automatically transferred to the memory stick. During this process three green LED's flash in sequence from left to right, as illustrated in Fig. 5-4.



*Fig. 5-4 Downloading Data*

This is followed by all four green LED's illuminating, as illustrated in Fig. 5-5, indicating that download is complete.



*Fig. 5-5 Download Complete*

Next, LED's coloured orange, orange and red illuminate, as illustrated in Fig. 5-6. This indicates that the test data has been downloaded and GMI 'TEST' software has re-started.



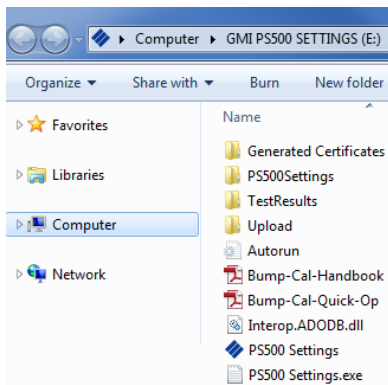
*Fig. 5-6 Test Software Re-started*

Next, the three (orange, orange and red) LED's extinguish, leaving only the green 'ON' LED illuminated, as illustrated in Fig. 5-2.

The USB memory stick can now be removed and transferred to a PC / Laptop to view test results.

### 5.3 VIEW / PRINT TEST RESULTS

Insert the USB memory stick into a USB port on PC / Laptop.  
Select 'Open folder to view files' to display the contents, as illustrated in Fig. 5-7.



*Fig. 5-7 PS500 Settings Contents Folder*

The contents of the folder are as follows:

- **Generated Certificates:**  
Contains copies of all calibration certificates generated.
- **PS500 Settings:**  
This is a systems folder. **Do not edit.#**
- **Test Results:**  
Contains copies of all test results generated.
- **Upload:**  
Contains configuration settings used by the Auto Bump / Calibration Station. **Do not edit.#**

- Autorun:  
USB memory stick will start automatically when inserted. **Do not edit.#**
- Handbook:  
Auto Bump / Calibration Station user handbook (in PDF format).
- Quick Operation Guide:  
Auto Bump / Calibration Station poster style document (in PDF format).
- Interop.ADODB.dll. **Do not edit.#**
- PS500 Settings application.
- PS500 Settings.exe. **Do not edit.#**

# - Depending on PC / Laptop 'Folder Option' settings these items may be hidden. If visible do not edit.

### 5.3.1 Test Result Files

The contents of this folder includes all instrument test result files downloaded from each Auto Bump / Calibration Station that the USB memory stick has been used on.

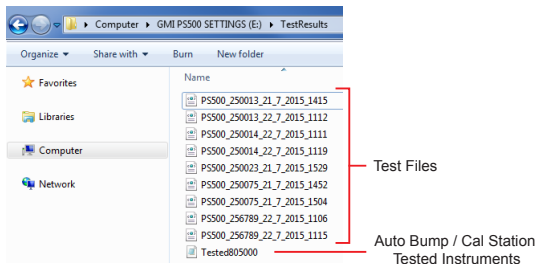


Fig. 5-8 'Test Results' Folder Contents

### Test Result Files:

The test file names in Fig. 5-8, (e.g. PS500\_250013\_21\_7\_2015\_1415) identifies the serial number of the instrument (e.g. 250013), the date tested in day, month and year (e.g. 21\_7\_2015) and the time testing was completed (e.g. 1415hrs).

Each file can be opened individually to display a comprehensive list of test results obtained from that particular instrument.

The following example, in Fig. 5-9, illustrates information available, including:

- Instrument Type                    (e.g. PS500)
- Test Type                            (e.g. CALIBRATION)
- Instrument Serial No.            (e.g. 250013)
- New Cal Due Date                (if Test registered as PASS)
- ABC Serial No.                    (e.g. 805000)
- Date Tested                        (e.g. 21 July 2015)
- Time Tested                        (e.g. 2:15:25 PM)
- Overall Result                    (e.g. PASS)

Followed by a listing of air tests, then gas tests which display target / lo Limit / hi Limit / result / range / re cal val / re cal result for the gas range.

Finally, an audible / visual alarm test result is displayed.

Test results, as illustrated in Fig. 5-9, can be printed if required.

```

<?xml version="1.0" encoding="utf-8"?>
<resultset>
  <info>
    <instrument>PS500</instrument>
    <testtype>CALIBRATION</testtype>
    <serial>250013</serial>
    <calGas>METHANE</calGas>
    <lel100pc>5</lel100pc>
    <calDueDate>21 January 2016</calDueDate>
    <absSerialNum>805000</absSerialNum>
    <date>21 July 2015</date>
    <time>2:15:25 PM</time>
    <overallResult>PASS</overallResult>
    <opID>Not Used</opID>
  </info>
  <airtests>
    <set>
      <range>% LEL</range>
      <lolim>-2</lolim>
      <reading>0</reading>
      <hilim>2</hilim>
      <prezero>PASS</prezero>
      <postzeroreading>0</postzeroreading>
      <postzero>PASS</postzero>
    </set>
    <set>
      <range>% O2</range>
      <lolim>20.4</lolim>
      <reading>20.9</reading>
      <hilim>21.4</hilim>
      <prezero>PASS</prezero>
      <postzeroreading>20.9</postzeroreading>
      <postzero>PASS</postzero>
    </set>
    <set>
      <range>PPM VOC</range>
      <lolim>-2</lolim>
      <reading>-1</reading>
      <hilim>2</hilim>
      <prezero>PASS</prezero>
      <postzeroreading>0</postzeroreading>
      <postzero>PASS</postzero>
    </set>
  </airtests>

```

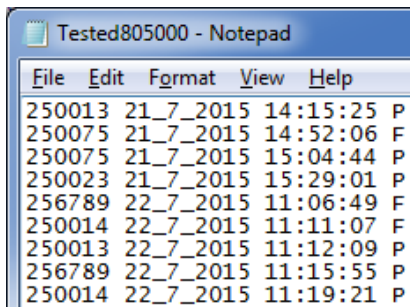
Fig.5-9 View Test Result File

Auto Bump / Calibration Station Instruments:

The tested files (e.g. Tested805000.rec) illustrated in the Fig. 5-8, identifies the serial number of each Auto Bump / Calibration Station (e.g. 805000) that the memory stick has been used to download data from. Each file contains a list of all instrument serial numbers tested on that particular station.

Each '.rec' file can be opened individually to display a comprehensive list of test results obtained from that particular Auto Bump / Calibration Station.

The following example, Fig. 5-10, illustrates a list of instruments tested on unit serial number 805000.



File	Edit	Format	View	Help
250013	21_7_2015	14:15:25	P	
250075	21_7_2015	14:52:06	F	
250075	21_7_2015	15:04:44	P	
250023	21_7_2015	15:29:01	P	
256789	22_7_2015	11:06:49	F	
250014	22_7_2015	11:11:07	F	
250013	22_7_2015	11:12:09	P	
256789	22_7_2015	11:15:55	P	
250014	22_7_2015	11:19:21	P	

*Fig. 5-10 Tested Instruments on 805000*

The file includes:

- A list of instruments tested
- Date Tested (day, month, year)
- Time Tested
- Test Result, Pass (P) or Fail (F)

### 5.3.2 Generated Certificates

The contents of this folder includes a list of all Bump Test / Calibration Certificates generated when selecting the 'View Certificate' button in the configuration window, as illustrated in Fig. 5-11.

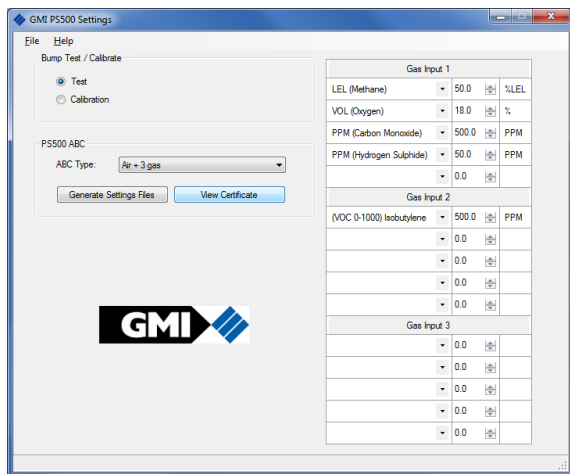
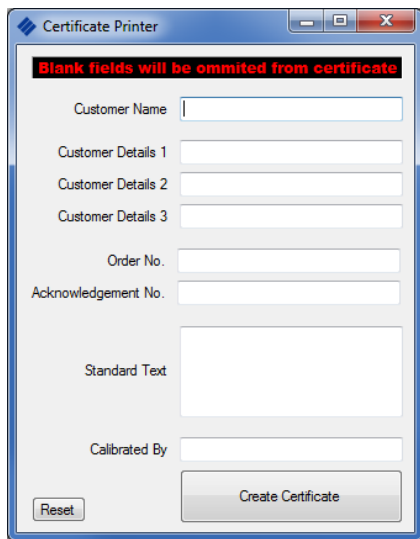


Fig. 5-11 Configuration Window

### Certificate Content:

The certificates, as illustrated in Fig. 5-17 and 5-18, include company details, order number, etc. These details are completed in a 'Certificate Printer' window, accessed by opening 'View Certificate' in the configuration window, illustrated in Fig. 5-11.

The 'Certificate Printer' window is displayed, as illustrated in Fig. 5-12.



**Certificate Printer**

**Blank fields will be omitted from certificate**

Customer Name

Customer Details 1

Customer Details 2

Customer Details 3

Order No.

Acknowledgement No.

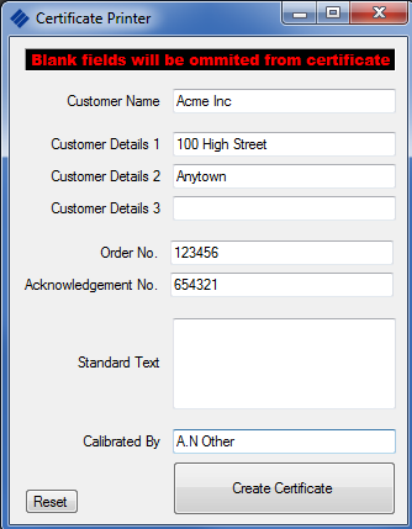
Standard Text

Calibrated By

*Fig. 5-12 'Certificate Printer' Window*

The windows contents can now be completed to include company name, address, etc., as illustrated in Fig. 5-13.





The screenshot shows a window titled "Certificate Printer" with a standard Windows-style title bar (minimize, maximize, close buttons). Inside the window, a red banner at the top reads "Blank fields will be omitted from certificate". Below this, the form contains several input fields with the following data: "Customer Name" is "Acme Inc", "Customer Details 1" is "100 High Street", "Customer Details 2" is "Anytown", "Customer Details 3" is empty, "Order No." is "123456", "Acknowledgement No." is "654321", "Standard Text" is an empty text area, and "Calibrated By" is "A.N Other". At the bottom left is a "Reset" button, and at the bottom right is a "Create Certificate" button.

Customer Name	Acme Inc
Customer Details 1	100 High Street
Customer Details 2	Anytown
Customer Details 3	
Order No.	123456
Acknowledgement No.	654321
Standard Text	
Calibrated By	A.N Other

Reset      Create Certificate

*Fig. 5-13 Certificate Completed*

When 'Certificate Printer' window is complete, select the 'Create Certificate' button, illustrated in Fig. 5-13, to print certificate as illustrated in example Fig. 5-18.

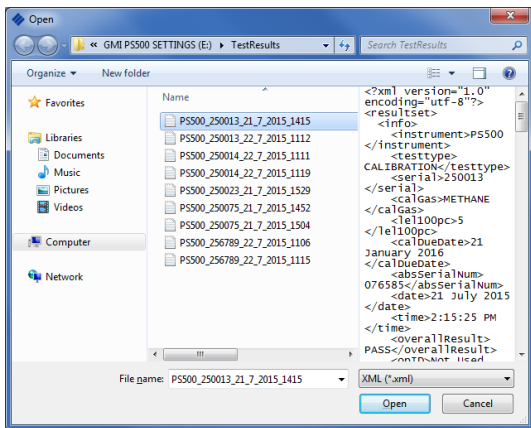
To include your company's logo on the printed certificate, insert the logo file, named **logo.jpg** into the 'Generated Certificates' folder on the memory stick. The logo will be included in the top right hand corner of the certificate, as illustrated in the 'GMI' logo example in the 'Calibration Certificate', illustrated in Fig. 5-18.

---

**Note:** Logo dimensions must not exceed 200 (W) X 50 (H) pixels.

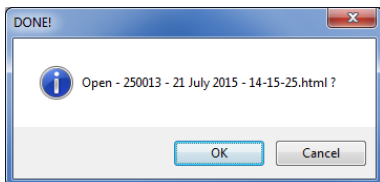
---

After selecting the 'Create Certificate' button, the test results folder will be displayed, highlight a test result for certificate generation then select 'Open', as illustrated in Fig. 5-14.



*Fig. 5-14 Select Test Result for Certificate Generation*

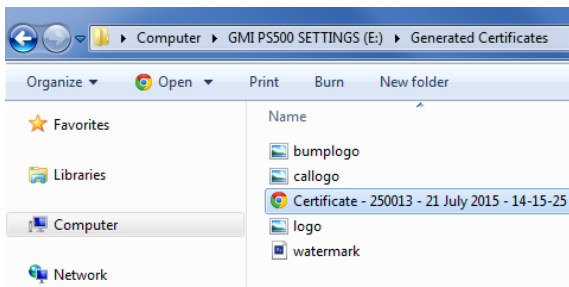
Next, a 'DONE!' window will be displayed. The certificate has now been generated for the selected test result file. Select 'OK', from the window, to open the generated certificate, as illustrated in Fig. 5-15.



*Fig. 5-15 Open Certificate*

### Generated Certificate Files

The certificate files illustrated in Fig. 5-16, identifies date and time of each certificate's generation.



*Fig. 5-16 Generated Certificate Files*

Each file can be opened individually to display / print a 'Bump Results' or 'Calibration Certificate'.

---

**Note:** If background image (green tick), illustrated in Fig. 5-15 or 5-16, is not present adjust local printer settings.

---

An example of the 'Bump Results' and 'Calibration Certificate' are illustrated in Fig. 5-17 and Fig. 5-18 respectively.


### Bump Results

---

**Customer Name** Acme Inc  
**Customer Details** 100 High Street  
 Anytown

**Order No.** 123456  
**Acknowledgement No.** 654321

**Model** PS500  
**Serial No.** 250013  
**Tested on** 23 July 2015  
**Audible Alarm** PASS  
**Visual Alarm** PASS  
**100% LEL equivalent** 5% Vol METHANE  
**Overall Result** PASS



#### Bump Results

Gas Applied	Range	Reading	Result
Zero Air	% LEL	0	PASS
Zero Air	% O2	20.9	PASS
Zero Air	PPM VOC	0	PASS
Zero Air	PPM H2S	0	PASS
Zero Air	PPM CO	-4	PASS

Gas Applied	Range	Reading	Result
5% LEL (Methane)	% LEL	57	PASS
18% VOL (Oxygen)	% O2	18.0	PASS
100PPM PPM (Carbon Monoxide)	PPM CO	99	PASS
-	PPM VOC	Not Tested	-
-	PPM H2S	Not Tested	-

*Fig. 5-17 Bump Results*


### Calibration Certificate

---

**Customer Name** Acme Inc  
**Customer Details** 100 High Street  
 Anytown

**Order No.** 123456  
**Acknowledgement No.** 654321

**Model** PS500  
**Serial No.** 250013  
**Tested on** 21 July 2015  
**Audible Alarm** PASS  
**Visual Alarm** PASS  
**100% LEL equivalent** 5% Vol METHANE  
**Overall Result** PASS



#### Calibration Results

Gas Applied	Range	Reading	Calibrated To	Result
Zero Air	% LEL	0	0	PASS
Zero Air	% O2	20.9	20.9	PASS
Zero Air	PPM VOC	-1	0	PASS
Zero Air	PPM H2S	0	0	PASS
Zero Air	PPM CO	0	-2	PASS

Gas Applied	Range	Reading	Calibrated To	Result
5% LEL (Methane)	% LEL	50	50	PASS
18% VOL (Oxygen)	% O2	18.0	N/A	PASS
100PPM PPM (Carbon Monoxide)	PPM CO	96	99	PASS
-	PPM VOC	Not Tested	-	-
-	PPM H2S	Not Tested	-	-

Calibrated by A.N Other : \_\_\_\_\_

*Fig. 5-18 Calibration Certificate*

## FIT MOUNTING BRACKET



*Fig. A-1 Auto Bump / Calibration Station  
(with mounting bracket fitted)*

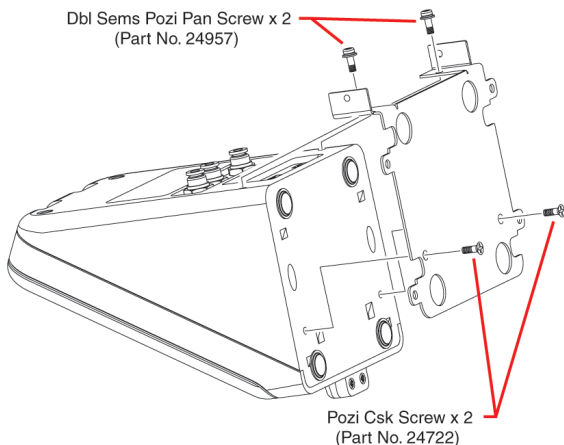
### 1. GENERAL DESCRIPTION

The PS500 Auto Bump / Calibration Station is supplied with a mounting bracket and necessary screws to secure the unit to a workbench or similar.

The bracket also provides the facility to 'daisy chain' a series of Auto Bump / Calibration Stations if required.

## **2. FIT MOUNTING BRACKET**

1. Make sure the workbench surface is clean and free from dirt and grime.
2. Place clean cloth or similar on workbench to protect Auto Bump / Calibration Station front cover surface from scratching and / or scuffing.
3. Carefully place the unit face down on workbench. Refer to Fig. A-2.



*Fig. A-2 Attach Bracket to Unit*

4. Loosely attach bracket to the underside of the unit with two pozi countersunk screws (Part No. 24722), as illustrated in Fig. A-2.

5. Loosely attach two double sems pozi pan screws (Part No. 24957) through bracket and into rear panel of unit, as illustrated in Fig. A-2.
6. Using a No.2 Pozidrive screwdriver, tighten all four screws to secure.

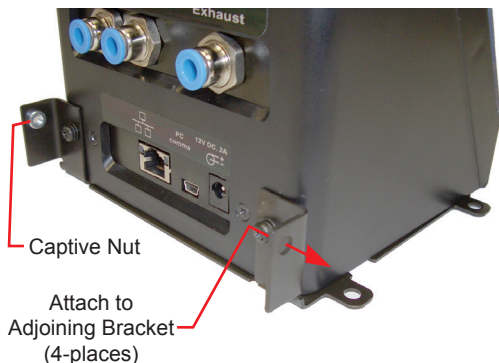
### 3. ATTACH UNIT to WORKBENCH / DAISY CHAIN OPTION

The bracket can be secured to a workbench or similar type surface using four suitable screws (not supplied).



*Fig. A-3 Attach Unit to Workbench*

A group of Auto Bump / Calibration Stations can be connected in a 'daisy chain' fashion by using a double semi pozi pan screw supplied (Part No. 24957) through bracket at rear of station and into captive nut of adjoining bracket, as illustrated in Fig. A-4.



*Fig. A-4 Attach Adjoining Units*



# INDEX

## Symbols

30 DAY LIMITED  
WARRANTY

ii

## A

About 3-11  
Additional Accessories 1-5  
Air + 1 gas 3-3  
Air + 3 gas 3-3  
Air inlet 2-5  
Air in-line filter 2-5  
Attach Adjoining Units A-4  
Attach Bracket to Unit A-2  
Attach Regulator Valve to  
Gas Cylinder 2-4  
Attach Unit to Workbench  
A-3  
Auto Bump / Calibration  
Hardware 1-5  
Auto Bump / Calibration  
Station 1-1  
Auto Bump / Calibration  
Station USB Port 3-9, 5-2

## B

Barbed adaptor 2-6  
Bump / Calibration  
Operation 4-1, 4-6

Bump Results 5-14  
Bump Test 3-4

## C

Calibration 3-6  
Calibration Certificate 5-14  
Calibration Gas Setup 2-1  
Calibration Software  
Licence i  
Certificate Completed 5-11  
Certificate Printer  
Window 5-10  
Close Front Cover 4-5  
Compare Gas Cylinder  
Label with Software  
Configuration 2-2  
Configuration Window 5-9  
Configuration Window  
(Multi Gas Set-up) 3-3  
Connect Air / Exhaust  
Tubing to Auto Bump /  
Calibration Station 2-5  
Connect Air Tubing  
to ABC 2-6  
Connect Calibration Gas  
2-1  
Connect Gas Cylinder to  
Auto Bump / Calibration  
Station 2-4

Connect Power Supply	2-7
Connect tubing to ABC	2-5
COPYRIGHT	iii

## **D**

Download Complete	5-3
Downloading Data	5-3
Download Test Results	5-2

## **E**

Editing VOC Gas Type	3-5
Exhaust outlet	2-5

## **F**

FAIL Indication	4-6
Fault Indication	4-8
Fit Mounting Bracket	A-1
flexiCal Plus	1-4

## **G**

Gas Concentration	3-5, 3-7
Gas Cylinder Label	2-2
Gas duration	1-2
Gas inlet adaptor	2-4
General Description	1-1
Generated Certificate	
Files	5-13
Generated Certificates	5-9
Generate Settings File	3-8

## **H**

Help Options	3-11
--------------	------

## **I**

Insert Instrument in Auto Bump / Calibration Station	4-2
--	-----

Instrument Correctly Seated	4-4
Instrument Type Selection	3-4
Introduction	1-1

## **L**

LIABILITY	iii
LICENCE AGREEMENT	i
Lift Instrument Clear of Gas Nozzle	4-8
LIMITED WARRANTY	ii
Locate Instrument	4-3

## **M**

Mounting Bracket	A-1
Multi-gas unit	1-2

## **N**

New PS500 Settings File Generated	3-8
Normal Operating Display	4-1

## **O**

On Demand Gas Flow Regulator	1-5
Open Front Cover	4-2, 4-7

## P

PASS Indication	4-6
PS500 Settings	i, 1-3, 3-1, 5-1
PS500 Settings	
Contents Folder	3-2, 5-4
PS500 SWITCH ON	4-1
Pump Fault	4-9

## Q

Quick Operation Guide	3-11
-----------------------	------

## R

Remove Instrument From	
Auto Bump / Calibration	
Station	4-7

## S

Select Test Result for	
Certificate Generation	5-12
Single gas unit	1-2
Software Configuration	2-3, 3-1
Software Licence	i

## T

Test Error	4-9
Test Gas Cylinder	1-5, 2-1
Test in Progress	4-6
Test Result Files	5-5
Test Results Folder	
Contents	5-5

## Test Software

Re-started	3-10, 5-3
TRADEMARK	
INFORMATION	iii
Traffic light system	1-3
Transferring Data to Unit	3-10
Transfer Updated 'PS500	
Settings' to ABC	3-9
Tygon tubing	1-5, 2-1

## U

Unit Loading Software	2-8
Unit 'ON' Indication	2-7
Upload Complete	3-10
USB memory stick	3-1, 3-9, 5-1
User Handbook	3-11

## V

View / Edit Software	
Configuration	3-1
View / Print Test Results	5-1, 5-4
View Test Result File	5-7
VOC ranges	3-5

## W

WARRANTY, LIMITED	ii
-------------------	----







Thank you for reading this data sheet.

For pricing or for further information, please contact us at our UK Office, using the details below.



**UK Office**

**Keison Products,**

**P.O. Box 2124, Chelmsford, Essex, CM1 3UP, England.**

**Tel: +44 (0)330 088 0560**

**Fax: +44 (0)1245 808399**

**Email: [sales@keison.co.uk](mailto:sales@keison.co.uk)**

Please note - Product designs and specifications are subject to change without notice. The user is responsible for determining the suitability of this product.