



GRESSWELL Valves Ltd

The **SERIES 2000** Range
to BS 6759 Parts 1, 2 & 3
and ***SAFed - TAS (Eagle Star)**

*(Steam, Air, Gases and Vapours up to 12.4 Bar.g)

BRONZE BODIES OR STAINLESS STEEL
SCREWED OR FLANGED CONNECTIONS

THE SERIES 2000 FULL LIFT SAFETY RELIEF VALVE RANGE

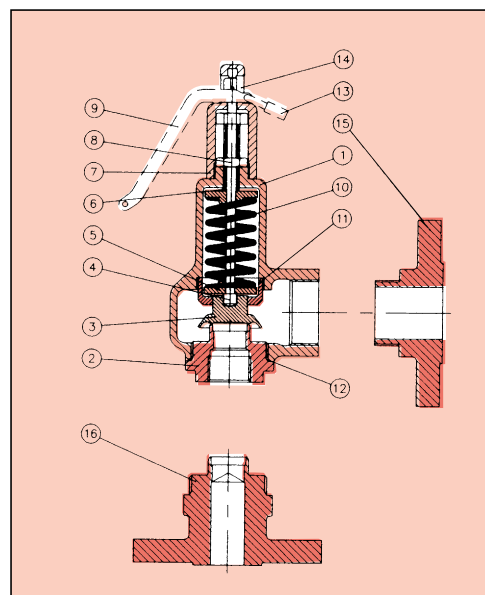
These valves offer the very latest technology combined with the most economic use of materials available on the market.

They are used to prevent excess pressure build up in systems, by automatically opening and closing at pre-set pressures.

Being of the full lift design, maximum flow-rates and positive shut off is provided through a variety of soft and hard seating materials.

SIZE RANGE

inlet connection	DN	15	20	25	32
outlet connection	DN	20	32	40	50

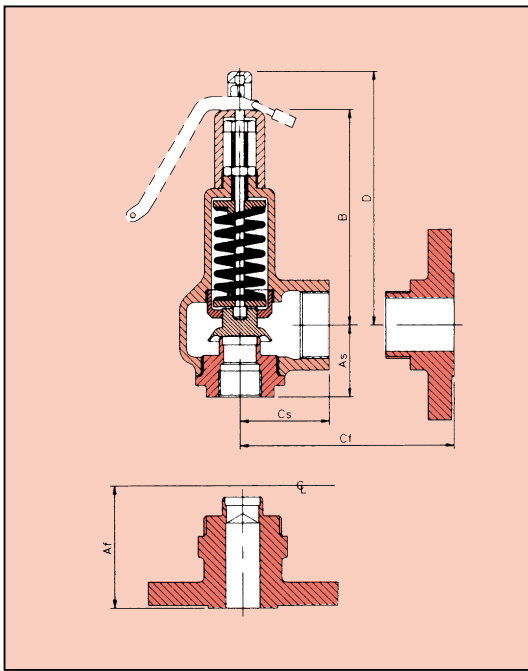


BRONZE BODY

No	Component	Material	No	Component	Material
1	Body	Gunmetal BS 1400 LG2	9	Test Lever	Brass
2	Base	Gunmetal BS 1400 LG2	10	Spring	Stainless Steel BS 2056-302-S26
3	Disc	Gunmetal BS 1400 LG2	11	Guide	Gunmetal BS 1400 LG2
4	Spindle	Brass BS 2874 CZ121	12	'O' Ring	Viton
5	Spring Plates	Brass BS 2874 CZ121	13	Padlock	Brass or Steel
6	Adjusting Screw	Brass BS 2874 CZ121	14	Pin (if fitted)	Stainless Steel
7	Cap	Brass	15	Outlet Flange	Gunmetal BS 1400 LG2
8	Locknut	Brass BS 2874 CZ121	16	Inlet Flange	Gunmetal BS 1400 LG2

STAINLESS STEEL BODY

No	Component	Material	No	Component	Material
1	Body	Stainless Steel Type 316	9	Test Lever	Stainless Steel
2	Base	Stainless Steel Type 316	10	Spring	Stainless Steel BS 2056-302-S26
3	Disc	Stainless Steel Type 316	11	Guide	Stainless Steel Type 316
4	Spindle	Stainless Steel Type 316	12	'O' Ring	Viton
5	Spring Plates	Stainless Steel Type 316	13	Padlock	Steel
6	Adjusting Screw	Stainless Steel Type 316	14	Pin (if fitted)	Stainless Steel
7	Cap	Stainless Steel Type 316	15	Outlet Flange	Stainless Steel Type 316
8	Locknut	Stainless Steel Type 316	16	Inlet Flange	Stainless Steel Type 316



FEATURES & BENEFITS

The Series 2000 range is a very efficient and cost effective automatic over-pressure protection device.

All valves are tested before leaving the works.

The Series 2000 range is a Full Lift design and as such, the flow-rates are very high when compared to traditional Safety valves.

Clear operating and maintenance instructions and certification as detailed below are supplied with each despatch.

Gresswell Valves Ltd. are quality assurance approved to BS EN ISO 9002: 1994. Certificate No. 91047.

DIMENSION CHART

SIZE inlet x outlet	As	Af	B	Cs	Cf	D	Weight (kgs)	
							Screwed	Flanged
15 x 20	32	75	121	40	67	145	1.1	1.7
20 x 32	44	75	132	55	82	156	1.6	2.6
25 x 40	48	76	139	60	90	163	2.6	3.3
32 x 50	64	100	250	70	116	295	7	12

All dimensions in millimetres (mm).

PIPE CONNECTIONS

Female Inlet x Female Outlet with threads to BS 21 1985 Rp parallel. Alternative threading available to special order. Flanged connections, meeting most standards are available.

TESTING

All Gresswell **Series 2000** Safety Valve is tested before leaving the factory to prove successful pressure retention across the valve seat.

If specified, valves can be pre-set to BS 6759 specification and sealed prior to despatch.

Flanged valves, without levers are tested to 1½ times the working pressure to ensure soundness of jointing.

Special tests or witness testing can be arranged at extra cost.

All Bronze **Series 2000** valves are supplied with certificates of conformance as standard. Test certificates can be supplied at extra cost if specified at time of ordering. All Stainless Steel valves have certification to EN10204-3.1.B.

ORDER REFERENCES & SEAT TYPES - BRONZE BODY SERIES 2000 VALVES

Code	Seat	Pressure Range	Temperature Range	Valve Type
200	St. St.	} LP = up to 180 psi (12.4 bar)	-90° to +220°C	Test Lever
202	Viton		-30° to +200°C	Test Lever
210	St. St.	} HP = 180 - 400 psi (27.6 bar)	-90° to +220°C	Test Lever
212	Viton		-30° to +200°C	Test Lever
220	St. St.	} LP = up to 180 psi (12.4 bar)	-90° to +220°C	Dome Cover
222	Viton		-30° to +200°C	Dome Cover
230	St. St.	} HP = 180 - 400 psi (27.6 bar)	-90° to +220°C	Dome Cover
232	Viton		-30° to +200°C	Dome Cover

ORDER REFERENCES & SEAT TYPES - STAINLESS STEEL BODY SERIES 2000 VALVES

Code	Seat	Pressure Range	Temperature Range	Valve Type
250	St. St.	} LP = up to 180 psi (12.4 bar)	-90° to +220°C	Test Lever
252	Viton		-30° to +200°C	Test Lever
260	St. St.	} HP = 180 - 400 psi (27.6 bar)	-90° to +220°C	Test Lever
262	Viton		-30° to +200°C	Test Lever
270	St. St.	} LP = up to 180 psi (12.4 bar)	-90° to +220°C	Dome Cover
272	Viton		-30° to +200°C	Dome Cover
280	St. St.	} HP = 180 - 400 psi (27.6 bar)	-90° to +220°C	Dome Cover
282	Viton		-30° to +200°C	Dome Cover

Note! Valves in the H.P. pressure range (180-400 psi) have reduced diameter bores. Therefore the Kdr factors are lower and flow-rates are calculated.



Thank you for reading this data sheet.

For pricing or for further information, please contact us at our UK Office, using the details below.



UK Office

Keison Products,

P.O. Box 2124, Chelmsford, Essex, CM1 3UP, England.

Tel: +44 (0)1245 600560

Fax: +44 (0)1245 600030

Email: sales@keison.co.uk

Please note - Product designs and specifications are subject to change without notice. The user is responsible for determining the suitability of this product.