

Seven2Go™



#### Seven2Go

pH / ORP

Conductivity

Ion Concentration

Dissolved Oxygen

**Everywhere You Measure pH**  
Quality Measurement Made Mobile

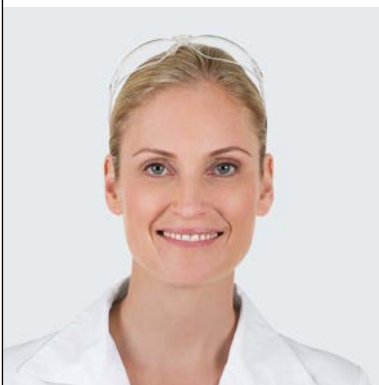
**METTLER TOLEDO**

# Your Mobile Lab, Wherever You Go

## The New Seven2Go™ Portables

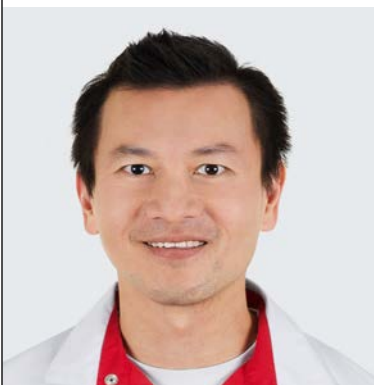
**Simple and reliable, attractively designed and robust. The new Seven2Go portables are engineered to provide users with fast quality data, one-handed operation, and durability. Ideally suited for mobile applications in the laboratory, at-line, or outdoors, the new line of pH/mV, conductivity, dissolved oxygen, and ion portables provide highly accurate and reliable measurements through a simple menu and intuitive operation.**

### Laboratory: Fast Quality Data



"Working in the laboratory requires focus, endurance, and a desire to produce data of utmost quality. In a long sample preparation and analysis workflow, I need a mobile instrument that makes pH measurements simple, fast, and reliable. Seven2Go provides me with fast quality data, so that I can quickly return to more time-intensive, complex sample analyses." Nicole, Microbiologist

### At-Line: One-Handed Operation



"Multitasking in an industrial, at-line environment is absolutely key. Juggling samples, measuring, and lab-notebooks at the same time is a real challenge. Luckily, the new Seven2Go portables are optimized for one-handed operation, ensuring that I have a free hand during my conductivity measurement for handling samples or documents." Marco, Chemist

### Outdoors: Durable Investment



"Dealing with the unexpected when collecting or measuring samples outdoors is a routine part of my job. I need an instrument that is durable and can withstand the elements. Seven2Go's robust design and durable uGo™ carrying case provide me with a mobile dissolved oxygen meter that withstands the test of time." Sabrina, Ecologist



**Designed with Purpose:**

The new Seven2Go routine and professional portable meters are designed to meet your measurement and data management needs.

# Fast Quality Data in the Lab

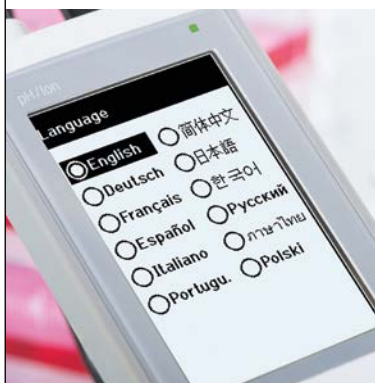
## Save Valuable Time and Effort

**pH measurements should never be time-consuming or complicated. Often part of lengthy sample preparation procedures, the determination of electrochemical parameters in aqueous media should be fast, easy, and reliable.**



"Thank's to Seven2Go's new status lights, I am instantly aware of how my instrument is doing. A green light indicates to me that the instrument functions normally. The blinking red light underlines a warning message or error. This guarantees me that the collected data are of the right quality, saving me valuable time."

### Simple Menu – Intuitive Operation



Seven2Go's new intuitive menu guarantees out-of-the-box operation for anyone. Users no longer need to study lengthy operating instructions. A brief look at the graphical QuickGuide and the instrument is installed and ready for calibration and actual measurement.

### ISM® Compatible – Automatic Sensor Recognition



Upon connection of any InLab ISM (Intelligent Sensor Management) sensor, the instrument automatically recognizes the sensor and stores sensor ID, serial number, and last calibration data. This reduces the time needed to setup the instrument and reduces chances of error thanks to correct sensor identification.



### **uFocus™ – Helping Cells to Proliferate**

With her Seven2Go pH/Ion meter and InLab® Routine Pro-ISM sensor, Nicole regularly monitors the pH of her cell culture flasks to ensure optimal conditions. The well-organized, simple uFocus measurement screen ensures she views only the pH data that matter to her making repeat measurements more efficient and focused.

# One-Handed Operation At-Line

## Give Yourself a Hand

**At-Line, samples move at a quick pace through the line. Measuring electrochemical parameters at spot-checks throughout the product's movement through the line requires agile employees with a free-hand. Seven2Go's new design ensures users always have a free hand for the handling of samples or documents.**



"Seven2Go's easy-to-reach, hardkey buttons allow me to operate the instrument without always looking at it. That way, I can focus on properly placing the sensor in my sample and on keeping a watchful eye on the moving product line during measurement."

### T-pad – Comfortable, Fast Navigation



Seven2Go's new T-pad hardkey buttons with clicker technology improve the speed with which you move through menus and set measurement parameters. The intuitive and faster navigation shortens the time to actual measurement.

### Endpoint Signaling – Attend to Your Measurement



Visual and acoustic signals can be setup to announce warnings, button presses or end-point stability, allowing you to focus your eyes on your ongoing measurement, sample handling, or the moving product line.



### **Sleek Design – Measuring TDS At-Line Made Comfortable**

Thanks to soft rubber side-guards, Marco can operate Seven2Go's conductivity meter comfortably with one hand, while placing the InLab® 738 ISM conductivity sensor into the softdrink bottle with the other hand. Even over lengthy periods of repeat TDS (total dissolved solids) measurements, a key quality indicator in soft drinks, the portable's light design makes Marco's measurements more comfortable.

# Durable Investment for Outdoors

## The Weatherproof Laboratory

**Beautiful, harsh, and challenging thanks to its ever-changing nature, the outdoor environment can place a tough strain on both user and the instrument prior, during and after measurement. The robust Seven2Go™ is designed to last and withstand the elements.**



"The new, robust uGo™ carrying case provides ideal protection and proper fitting for my new Seven2Go meter, sensor, and all of the accessories I need to perform regular measurements outdoors. That I can use the uGo case as a mobile lab, in which I can calibrate and setup my measurements, is a fantastic add-on."

### IP67 – Weatherproof Data Transmission



Thanks to its IP67 protection and drop test resistance, the new Seven2Go portables are able to withstand harsh and demanding environments. The weatherproof USB connector ensures data can be transferred safely even after the meter has been exposed to heaps of water.

### Outdoor Mode – Maximize Battery Life



The outdoor user mode, which comes in addition to the routine and expert laboratory modes, provides users with default instrument settings (e.g. screen brightness sleep mode, and auto-shutdown) that ensure the Seven2Go portable's battery lasts, even if the nearest AA batteries are miles away.



### **Sunlight-Proof – View Data Even in Direct Sunlight**

With her new Seven2Go S9 dissolved oxygen (DO) meter and optical InLab® OptiOx sensor, Sabrina can read the dissolved oxygen values gathered from waters downriver from the waste water treatment plant even in direct sunlight. The brand new screen's contrast is enhanced by sunlight, allowing Sabrina to control the purity of river water even under bright conditions.

# The Right Seven2Go™ For Your Needs

## The Seven2Go Meters:



### pH, ORP, and Ion Measurement:

Overview of Functions	S2 (pH/mV)	S8 (pH/Ion)
Order Number (Meter only)	30207949	30207874
Measuring Range (pH)	-2.00...20.00	-2.000...20.000
Resolution/Accuracy (pH)	0.01 / ±0.01	0.001 / ±0.002
Measuring Range (rel. mV)	-1999...1999	-2000...2000
Resolution/Accuracy (rel. mV)	1 / ±1	0.1 / ±0.1
Measuring Range (Ions in mg/L, mmol/L, mol/L)		1.00e-09...9.99e+09
Measuring Range (Temperature)	-5.0...105.0 °C	-5.0...130.0 °C (ATC) <sup>1</sup> -30.0...130.0 °C (MTC)
Resolution/Accuracy (Temperature)	0.1 / ±0.5	0.1 / ±0.2
Calibration points	5	5
Pre-defined pH buffer groups	4	8

<sup>1</sup> ATC / MTC: Automatic / Manual Temperature Compensation

S8 pH/Ion Professional Meter



### Conductivity Measurement:

Overview of Functions	S3 (Conductivity)	S7 (Conductivity)
Order Number (Meter Only)	30207954	30207961
Measuring Range (Conductivity)	0.010 µS/cm...500 mS/cm	0.010 µS/cm...1000 mS/cm
Resolution/Accuracy (Conductivity)	0.001 / ±0.5%	0.001 / ±0.5%
Supports TDS, Specific Resistance, Salinity	Yes	Yes
Measuring Range (Temperature)	-5.0...105.0 °C	-5.0...105.0 °C
Resolution/Accuracy (Temperature)	0.1 / ±0.2	0.1 / ±0.1
Calibration points	1	1

S3 Conductivity Routine Meter



### Dissolved Oxygen Measurement:

Overview of Functions	S4 (polarographic DO)	S9 (optical DO)
Order Number (Meter only)	30207958	30207970
Measuring Range (DO)	0.00...99.9 mg/L	0.00...50.0 mg/L
Resolution/Accuracy (DO)	0.01 / ±0.2 mg/L	0.01 / ±0.1 mg/L
Measuring Range (Temperature)	0.0...60.0 °C	0.0...50.0 °C
Calibration points	2	2
Automatic/Manual Pressure Compensation	Yes	Yes

S9 Optical DO Professional Meter

# Combinations to Fit Your Measuring Needs:

Different combinations of Seven2Go meters, sensors, and accessories (kits) are available, ideally suited for measurement in specific applications or samples:

1 Meter



S2 pH/mV Meter

+

1 Sensor



InLab® Solids Pro Sensor

+

Accessories



uGo™ Carrying Case



Sample/Application



pH Determination in Hardened Cheese

## S2 Food Kit (A/N: 30207952)

### Overview of Kits Available

	Seven2Go Meter Kits	Order Number	Ideally suited for
pH/mV, ORP, Ion	S2-Standard kit with InLab Expert Pro-ISM-IP67 sensor	30207950	wide range of samples including emulsions and suspensions.
	S2-Field kit with InLab Expert Pro-ISM-IP67 sensor & uGo™ carrying case	30207951	as above, but especially for measurements on the go.
	S2-Food kit with InLab Solids Pro-IP67 sensor & uGo carrying case	30207952	solid and semi-solid samples like cheese and meat.
	S2-Light kit with InLab Versatile Pro sensor	30207953	academic and educational purposes.
	S8-Standard kit with InLab Expert Pro-ISM-IP67 sensor	30207875	wide range of samples, also suited for emulsions and suspensions.
	S8-Field kit with InLab Expert Pro-ISM-IP67 sensor & uGo carrying case	30207877	as above, but especially for measurements on the go.
	S8-Biotechnology kit with InLab Routine Pro-ISM-IP67 sensor	30207878	fast results in a wide range of samples including harsh chemicals.
	S8-Fluoride kit with perfectionION™ Fluoride sensor & uGo carrying case	30207879	aqueous samples, tooth paste and mouth wash.
Conductivity	S3-Standard kit with InLab 738-ISM-IP67 sensor	30207955	aqueous samples with mid to high conductivity.
	S3-Field kit with InLab 738-ISM-IP67 sensor and uGo carrying case	30207956	as above, but especially for measurements on the go.
	S3-Bioethanol kit with InLab 725 sensor and uGo carrying case	30207957	bioethanol and biofuels.
	S7-Standard kit with InLab 738-ISM-IP67 sensor	30207962	aqueous samples with mid to high conductivity.
	S7-Field kit with InLab 738-ISM-IP67 sensor & uGo carrying case	30207963	as above, but especially for measurements on the go.
	S7-USP/EP kit with InLab 742-ISM-IP67 sensor & uGo carrying case	30207873	ultra-pure water and low conductivity samples.
Dissolved Oxygen	S4-Standard kit with InLab 605-ISM-IP67 sensor	30207959	aqueous samples, alcoholic and non-alcoholic beverages.
	S4-Field kit with InLab 605-ISM-IP67 sensor & uGo carrying case	30207960	as above, but especially for measurements on the go.
	S9-Standard kit with InLab OptiOx-ISM-IP67 sensor	30207971	fast results in aqueous samples.
	S9-Field kit with InLab OptiOx-ISM-IP67 sensor & uGo carrying case	30207972	as above, but especially for measurements on the go.
	S9-BOD kit with InLab OptiOx-ISM-IP67 sensor, BOD adapter, and uGo carrying case	30207939	BOD measurements in all types of water samples.



Thank you for reading this data sheet.

For pricing or for further information, please contact us at our UK Office, using the details below.



**UK Office**

**Keison Products,**

**P.O. Box 2124, Chelmsford, Essex, CM1 3UP, England.**

**Tel: +44 (0)330 088 0560**

**Fax: +44 (0)1245 808399**

**Email: [sales@keison.co.uk](mailto:sales@keison.co.uk)**

Please note - Product designs and specifications are subject to change without notice. The user is responsible for determining the suitability of this product.