

# MOUNTING AND OPERATING INSTRUCTIONS

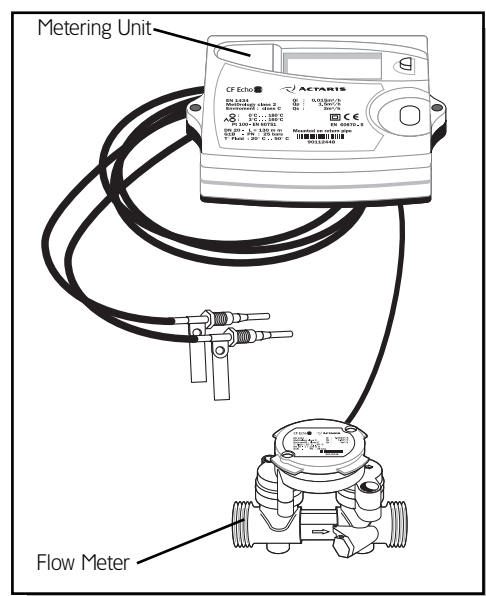
## CF Echo II

### 1. Delivery CF Echo II

- Compact heat meter with removable calculator
- 1 connected flow meter
- 2 temperature sensors (optional)
- 1 wall mounting bracket
- 1 package with material for sealing, screws, wall plugs (6 mm)
- 1 set of gaskets

#### Required tools

- 3 mm screw driver
- Wrench
- Crosstip screwdriver



### 2. General indications

Heat meter CF Echo II is a sophisticated electronic measuring instrument. The following instructions must be carefully observed in order to ensure correct mounting and to fulfill all safety and guarantee conditions.




#### Advice concerning safety

Hot water circuits and mains power supplies run under high temperatures and pressures as well as under high voltages. When operated incorrectly, these may cause serious injuries. Due to this, the measuring units may only be installed by qualified and trained personnel. The casings of the heat meters are designed for cold, warm and hot water with the characteristic values specified for each case, excluding any other liquid. If the integrator casing is submitted to strong shocks, impacts, drops from more than 60 cm height or similar stresses, the heat meter must be replaced. Pipes must be earthed. Before opening the meter, mains voltage (optional) must be isolated.

### 2.2 CE marks and protective classes

Metering unit CF Echo II fulfils all requirements of EC guidelines and is approved for environmental class C (industrial applications) according to DIN EN 1434:

- ambient temperature: +5 °C ... +55 °C (indoors installation)
- storage temperature (without battery): -10 °C ... +60 °C
- relative atmospheric humidity: < 95 %
- absolute altitude: < 2.000 m
- protective class IP 64 according to DIN EN 60529 (protection against dust and splashing); flow meter IP 66/67
- EMC protection according to DIN EN 50081-1/2, DIN EN 50082-1/2
- double protective insulation  (protective class II according to IEC 60364-4-443)
- CF Echo II fulfils the requirements for pressurized instruments guideline (97/23/EG) concerning specific pressures and temperatures

- Discarded electronic devices or batteries contained within the CF Echo II must not be put in normal household waste. Dispose in accordance to local government regulations.



### 2.3 Further important instructions



- The flow meter must not be lifted or transported by the connecting cable.
- Mounting position shall be selected so that the connecting cable of the flow meter and the temperature probe cables will not lie near mains cables or other sources of electromagnetic disturbances (minimum distance 50 cm.).
- Cables must not be installed along pipes reaching temperatures above 55 °C.
- Opening of calibration seals will cause the loss of calibration validation and of guarantee, including conformity with pressurized devices guideline 97/23/EG.
- The casing may only be cleaned on the outside with a soft, damp cloth. Do not use detergents.
- Installation must be carried out according to DIN 4713 or DIN EN 1434.

### 3. Mounting the flow meter

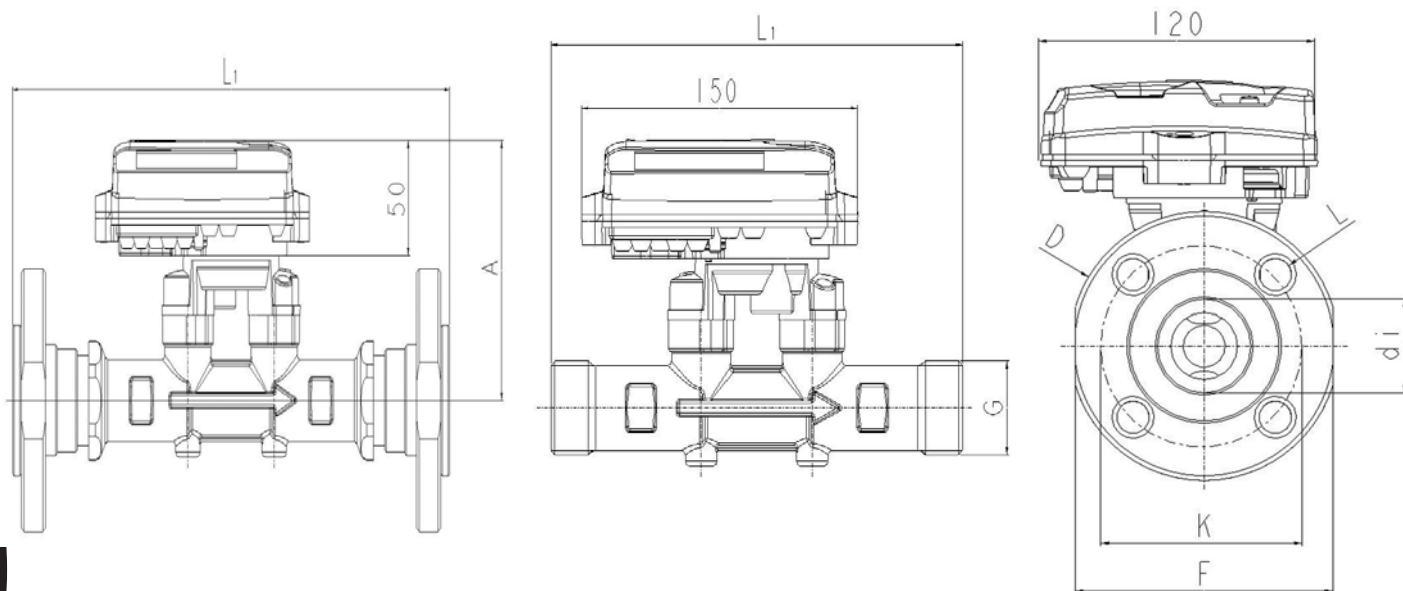
#### 3.1 Operating conditions, dimensions and materials

The operating parameters of the heating circuit must not exceed given values:

Nominal pressure 16/25 bars, operating temperature 130 °C, short term maximum temperature 150 °C. For further technical data cf. table:

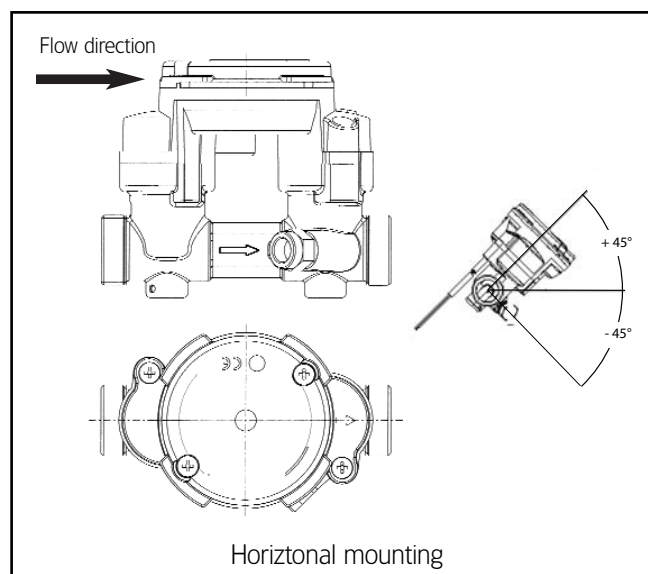
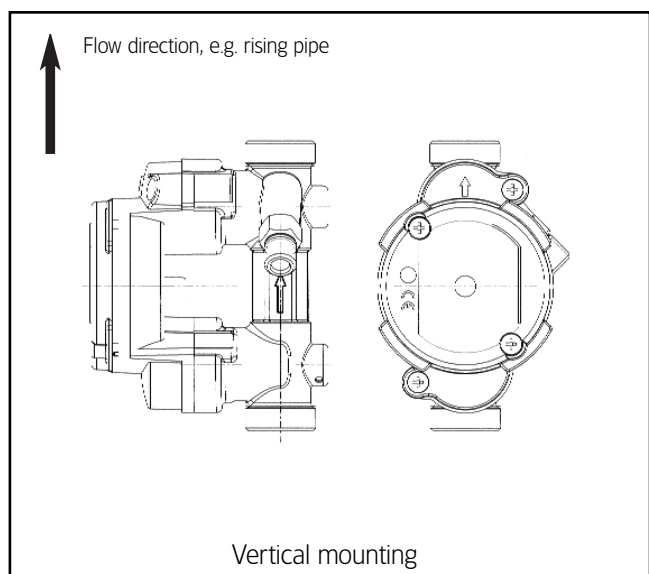
Thread connection																
Connection	Thread after ISO 228															
Transducer materials	Stainless steel															
O ring	EPDM															
Pipe materials	brass Cu Zn36 Pb2 AS								bronze Cu Pb5 Sn5 Zn5							
Nominal flow, $q_p(Q_n)$ m³/h	0,6			1,5			2,5			3,5		6			10	
Max. flow, $q_s$ m³/h	1,2			3			5			7		12			20	
Min. flow, $q_i$ l/h	6			15			25			35		60			100	
Startup flow l/h	1,2			3			5			7		12			20	
Build in length $L_1$ , mm	110	130	190	110	130	190	130	190	260	150	260	150	260	260	200	300
Nominal diameter	15	20	20	15	20	20	20	20	25	25	25	25	25	32	40	40
Thread connection G	G3/4B		G1B		G3/4B		G1B		G1B	G1"1/4B		G1"1/4B		G1"1/4B		G1"1/2B
High A, mm	110	110	110	110	110	110	110	110	114	114	114	114	114	114	123	123
Weight, kg	1,1	1,2	1,5	1,1	1,2	1,5	1,1	1,4	1,9	1,5	1,9	2,4	2	1,8	2,5	5,5
Internal diameter $d_i$ , mm	19	19	19	19	19	19	20	20	28,5	28,5	28,5	28,5	28,5	28,5	44	44
Pressure loss at $q_p$ , bar	0,03	0,03	0,03	0,21	0,21	0,21	0,15	0,15	0,15	0,12	0,12	0,13	0,13	0,13	0,08	0,08

Flange connection														
Connection	Flanged after ISO 7005 3, PN 25													
Transducer materials	Stainless steel													
O ring	EPDM													
Pipe materials	brass Cu Zn36 Pb2 AS					bronze Cu Pb5 Sn5 Zn5								
Nominal flow, $q_p(Q_n)$ m³/h	0,6	1,5	2,5	3,5		6			10			15		
Max. flow, $q_s$ m³/h	1,2	3	5	7		12			20			30		
Min. flow, $q_i$ l/h	6	15	25	35		60			100			150		
Startup flow l/h	1,2	3	5	7		12			20			30		
Build in length $L_1$ , mm	190	190	190	260	300	260	300	270	300	250	270	270	250	
Nominal diameter	20	20	20	25	40	25	40	50	40	40	50	50	50	
High A, mm	110	110	110	114	114	114	114	114	123	123	123	123	123	
Weight, kg	3,2	3,2	3,2	4,5	7,1	4,5	5,8	8,6	8,2	8	9	9	8,8	
Flange Diameter D, mm	105	105	105	115	150	115	150	165	150	150	165	165	165	
Bolt circle diameter K, mm	75	75	75	85	110	85	110	125	110	110	125	125	125	
Bolt holes diameter L, mm	14	14	14	14	18	14	18	18	18	18	18	18	18	
Flange dimension F, mm	100	100	100	110	140	110	140	160	140	140	160	160	160	
Internal diameter $d_i$ , mm	19	19	20	28,5	28,5	28,5	28,5	28,5	44	44	44	44	44	
Pressure loss at $q_p$ , bar	0,03	0,21	0,15	0,12	0,12	0,13	0,13	0,13	0,08	0,08	0,08	0,16	0,16	



### 3.2 Mounting instructions

- Never carry out welding or drilling work near the meter.
- Leave the meter in its original package until all connections, insulating, painting and cleaning tasks have been performed.
- Always install the meter according to the mounting position indicated on the nameplate (supply or return).
- The flow meter may be installed either horizontally or vertically, but not upside down.
- The heat meter must be protected against shocks and vibrations which might occur at the place of installation. When charging the pipes with water, isolation valves must be opened slowly.
- Thread and flange connections of the meter must match with the nominal width DN and nominal pressure PN (according to EN 1092) of the corresponding counterparts of the pipes. The metering unit must not be subject to excessive tensions caused by pipes or molded parts. The pipes of the heating system must be securely fastened before and after the flow meter. In case of flange connections, all bolts must be used and tightened. All bolts, nuts and gaskets used must comply with the nominal width DN, the pressure level PN, the maximum admissible temperature and pressure.



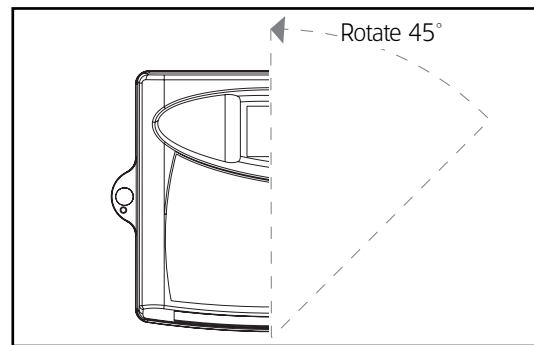
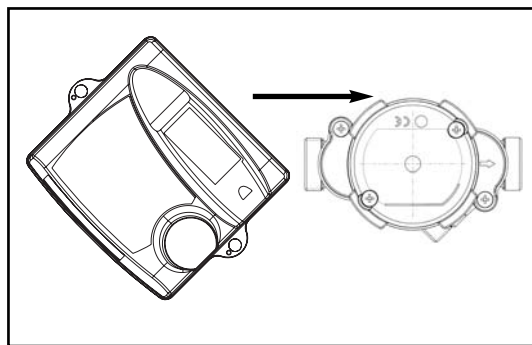
## 4. Mounting of the integrator

### 4.1 Mounting of the integrator

The integrator must not be installed with the flow meter when environmental temperature is permanently above 55 °C or in case of operation for cooling purposes.

Set metering unit with an angle of 45° on the support

Rotate metering unit 45° till it engages.

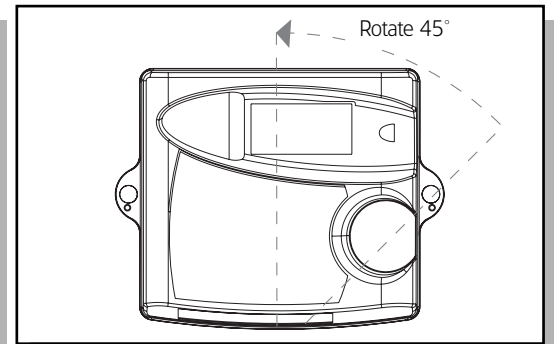
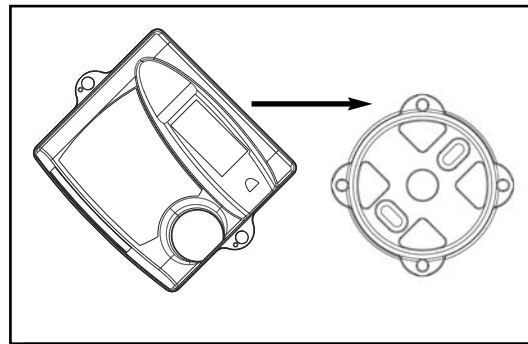
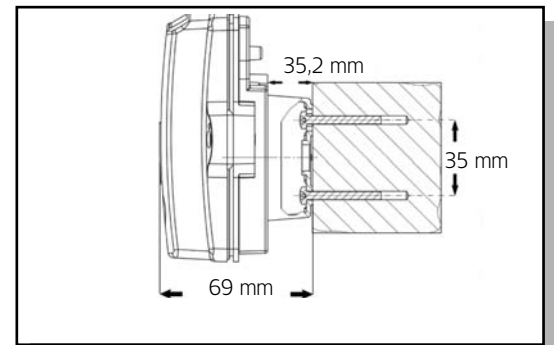


## 4.2 Mounting on the wall

If temperatures in the heating circuit are permanently higher than 90 °C, or if ambient temperature is more than 55 °C, it is recommended to mount the integrator on the wall.

Screw the supplied wall support to the wall or fasten it to a cool pipe.

Set the integrator with an angle of 45° on the support  
Rotate the metering unit by 45° till it engages.



## 5. Mounting of temperature probes (if not already done in factory)

### 5.1 Technical data

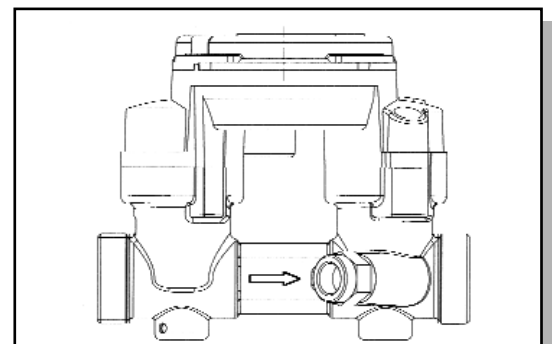
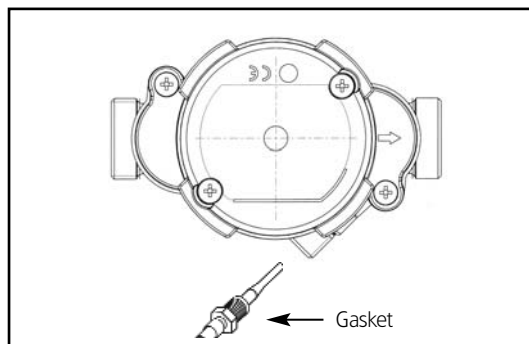
- Connection 2 wire technology
- Cable diameter 3.5 mm ... 6.5 mm
- Maximum wire section 0.2 ... 1.5 mm<sup>2</sup>
- Type PT 100 or PT 500 according to DIN EN 60751  
(Observe nominal value of integrator – cf- nameplate)

### 5.2 Mounting

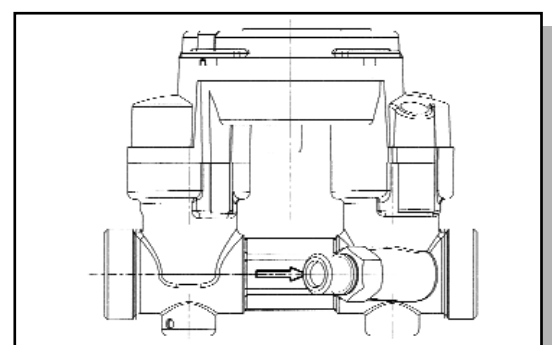
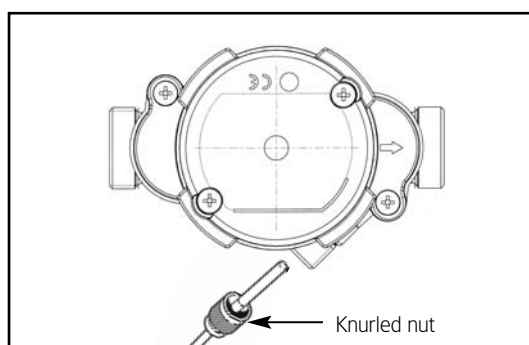
Only use pairs of temperature probes with the same serial number. Probe cable must not be shortened or lengthened. Probes must be mounted according to the guidelines of EN 1434.

For nominal flows  $Q_p$  0.6 – 2.5, the return measuring point for direct measuring probes of type DS or for pocket type probes PS must be integrated in the flow meter.

DS, measurement in  
flow meter  
(DN 15/20 only)

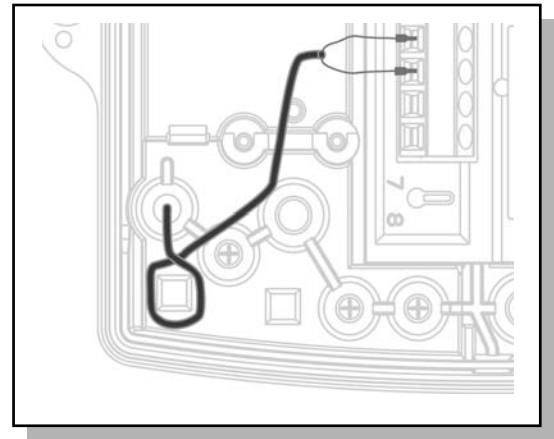
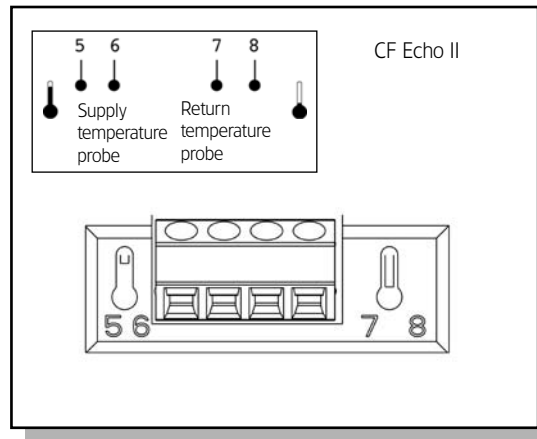


PS, measurement in  
flow meter  
(DN 15/20 only)



### 5.3 Connecting temperature probe cables

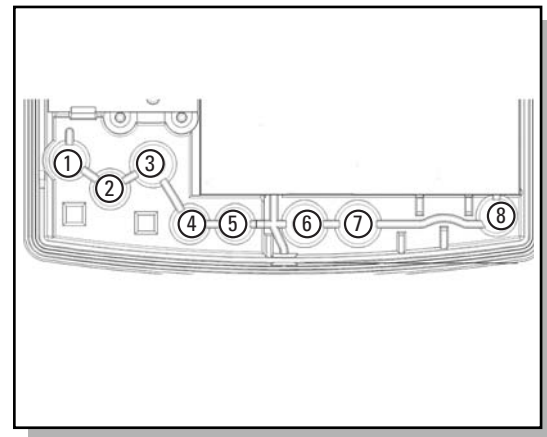
- Pierce the first and second cable ducts of the integrator (from the left).
- Pull the cable of the supply temperature probe (= warmer pipe) through the first duct and the cable of the return temperature probe through the second throughput, from the left.
- Make a loop to resist tension and loop over the corresponding support (cf. figure).
- Connect wires according to the plan of terminal connections (protected against wrong polarity) to the terminal strip.



*The color of the wires (polarity) is irrelevant*

Cable glands:

1.  $\varnothing 4.25 \pm 0.75 \text{ mm}^2$  – T. probe (supply)
2.  $\varnothing 4.25 \pm 0.75 \text{ mm}^2$  – T. probe (return)
3.  $\varnothing 6 \pm 1 \text{ mm}^2$  – mains power supply – optional
4.  $\varnothing 4.25 \pm 0.75 \text{ mm}^2$  – optional
5.  $\varnothing 4.25 \pm 0.75 \text{ mm}^2$  – optional
6.  $\varnothing 6 \pm 1 \text{ mm}^2$  – T. probe (supply)/optional
7.  $\varnothing 6 \pm 1 \text{ mm}^2$  – T. probe (return)/optional
8.  $\varnothing 3.75 \pm 0.75 \text{ mm}^2$  – flow meter



## 6. Power supply

Three types of power supply are available. As standard, system is fitted with a 6 years battery.

### 6.1 Battery for 6 years\*

Type 2 x lithium 3.6 V-AA, soldered to an insert board

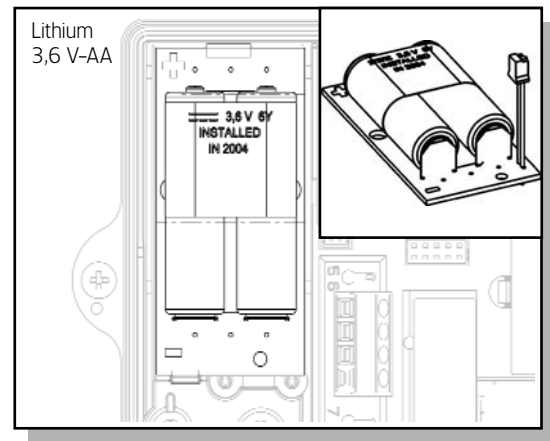
Use only original battery.

Do not recharge, open, heat to more than 100 °C, expose to an open flame or immerse in water.

Do not dispose through domestic waste.

Dispose in accordance to local government regulations.

- Connect battery using plug-in connectors.
- Place the battery into the corresponding recess in the integrator casing and engage.



CAUTION: when the battery has been disconnected more than one minute, it may become necessary to reset the interior clock.

\* Optional: 12 years battery available on request.

### 6.2 Mains module

- |                             |                             |
|-----------------------------|-----------------------------|
| • Mains voltage             | 230 V $\pm$ 15 %            |
| • Mains frequency           | 50 Hz $\pm$ 2 %             |
| • Maximum power requirement | 1 VA                        |
| • Type of cable             | 2 wires (no earth)          |
| • Cable diameter            | 4.5 mm ... 7.0 mm           |
| • Section of wire           | 0.5 ... 2.5 mm <sup>2</sup> |

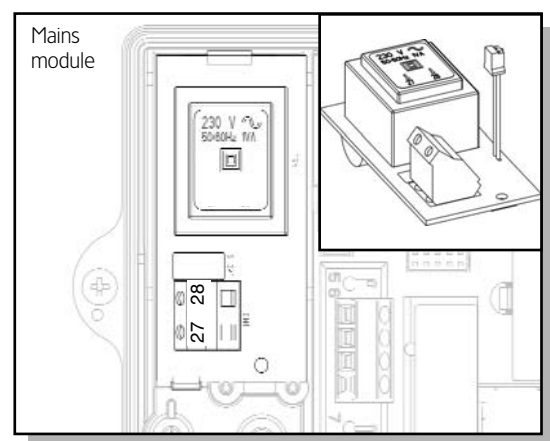
Heat meters with mains power supply must be connected according to installation instructions. The mains power supply must be protected against voltage failures. Protective systems (circuit breakers) must be used, in order to ensure secure disconnection of the unit from the mains in case of electric trouble (breaking current < 1A).

An emergency circuit breaker should be:

- installed within reach
- clearly recognizable as an emergency breaker
- cut off both wires
- clearly show the on/off position

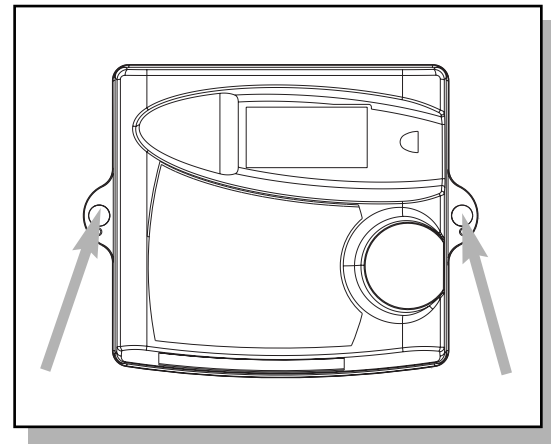
The connecting cable of the mains option must be directly connected to the breaker switch.

- Cut off grid voltage (breaker switch).
- Open meter casing and connect the mains power supply using the plug.
- Introduce the mains option board into the corresponding recess in the casing.
- Pierce the third cable gland from the right and pull through mains cable.
- Clamp the cable using the tension relieving system.
- Connect wires to terminals No. 27 and 28 (safe guard against wrong polarity, strip 8 mm of insulation).
- Close casing lid and switch on mains voltage.



### 6.3 Start up

- Check all functions, especially the correct display of temperatures and volume flow.  
If the casing was opened:
- replace upper part of casing and screw together,
- secure screws with users seal (use supplied plastic seals or wire seals).



## 7. Operating instruction CF Echo II

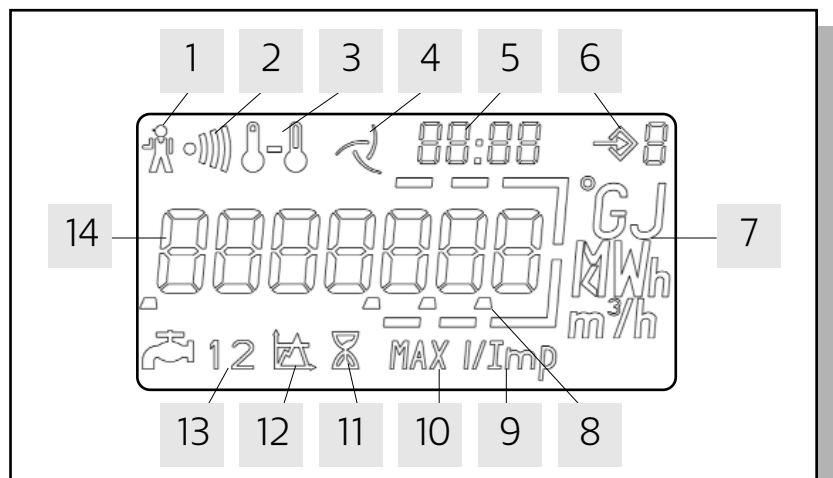
A heat meter is a measuring instrument used to measure the energy released in a heating or cooling system. A compact heat meter consists of the partial components formed by the pair of temperature probes, the flow meter and the integrator, the complete instrument in itself being subject to compulsory calibration when in commercial utilization. The meter collects the measuring values of the pair of probes and of the flow meter, permitting the display of diverse data over 3 separate display levels.

Display level 1: billing level (cumulated energy and volume display)

Display level 2: service level (actual operating data of the heat meter)

Display level 3: due date level (13 months values for cumulated energy and volume)



### 7.1 LC display and signification of segments

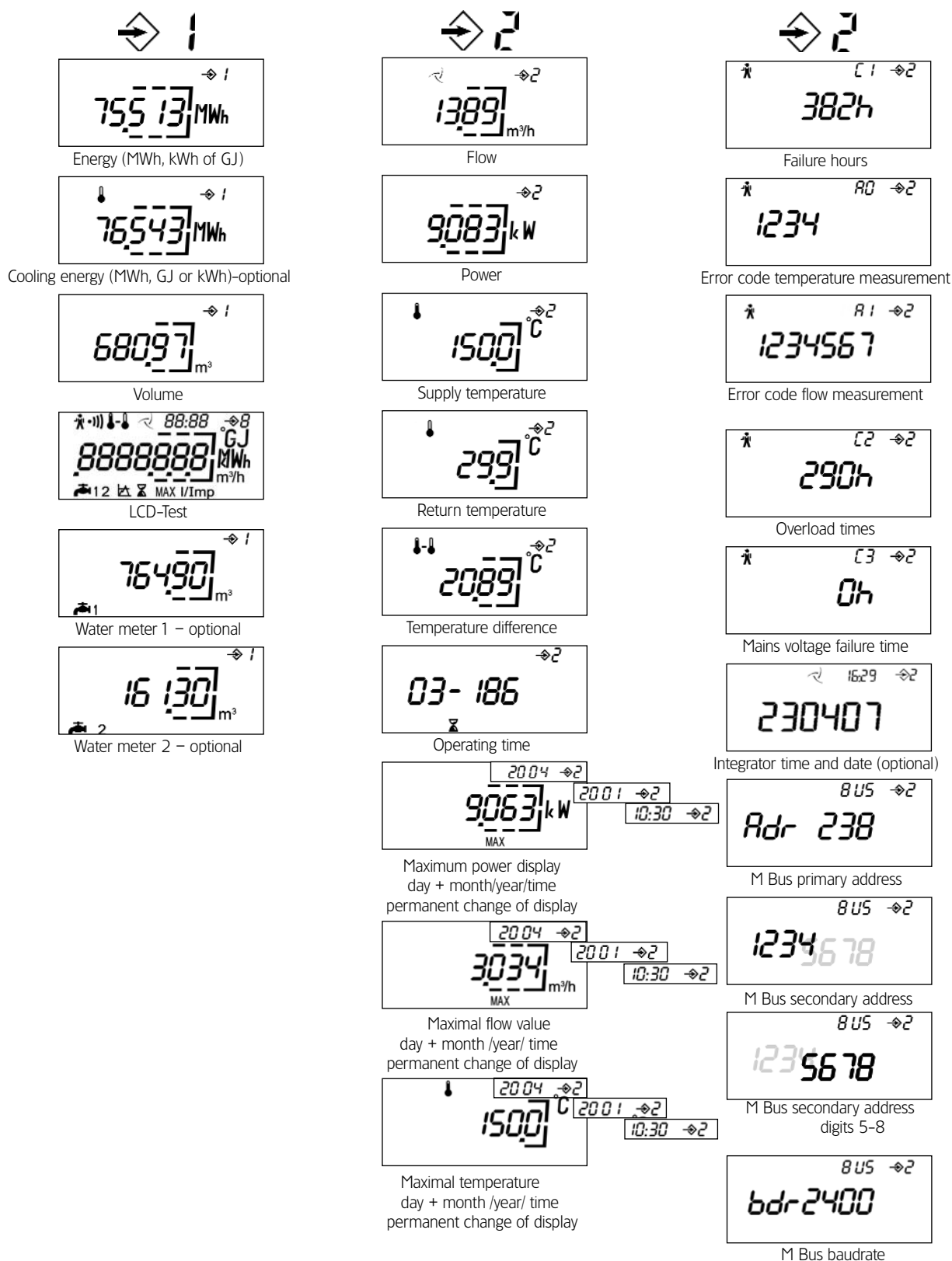


1. Alarm symbol: energy measurement stopped for cause of trouble cf. 7.3.5
2. Dirt alarm: energy measurement continued, cleaning of the flow sensors are necessary
3. Temperatures: appears for temperature related displays or for displays of cooling energy in case of combined heating/cooling meters.
4. Flow display: permanent symbol: flow is present / flashing symbol: no flow
5. Date & time: representation of date and time indications related to time dependent displays, e.g. due day values and maximum values.
6. Display level: actually selected display level
7. Unit: physical unit
8. Decimal point
9. Pulse weight of exterior connected water meters (only when a corresponding option board is being used)
10. Maximum value: appears when maximum values are displayed
11. Operating time: appears for operating time display
12. Not used
13. Water meter 1 or 2: display concerns exterior water meter (1 or 2)
14. Main display area: 7 digits for the display of all values displaying all cumulated and actual values

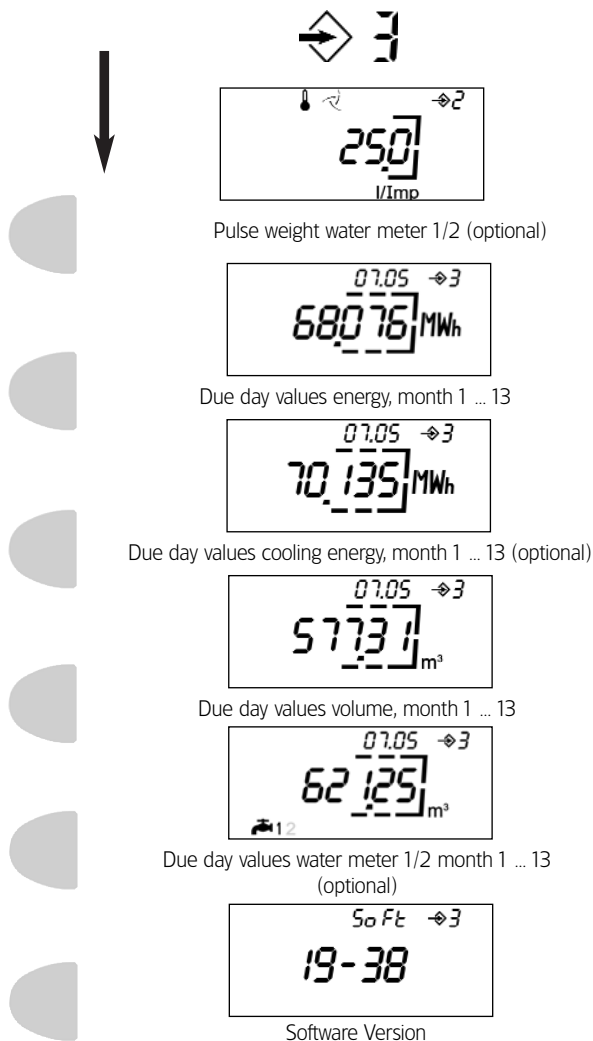


## 7.2 All display levels and displays in detail

Depending on the type of unit, the actual range of display may differ from the one shown here. Pressing of the push button activates the LC display. Switching of levels is achieved by pressing for 2 sec. of push button  , change of display through short pressing of push button 







## 7.3 Indications concerning special display functions (partly optional, depending on type of unit)

### 7.3.1 Energy and volume index (display levels 1 and 3)

The energy unit is programmed at the factory. As a standard, energy is displayed in MWh, optionally KWh or GJ are possible.

### 7.3.2 Cooling energy (display level 1)

Display of cumulated cooling energy for energy versions for utilization as combined heating/cooling circuits (please refer to point 9 for more detailed information).


### 7.3.3 Water meters 1 and 2 (display level 1)

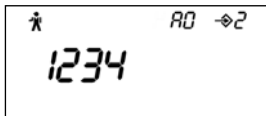
Display of the meter status of connected supplementary water meters with impulse output, using a corresponding optional board (please refer to point 8 for more detailed information).

### 7.3.4 Maximum value display (display level 2)

The actual monthly maximum values for power output, flow and flow temperature are displayed with the corresponding time stamp. Internally, 13 monthly maximum values are stored for each case, which may be read out over the M Bus or the optical interface. The duration of period to assess the maximum values is 60 minutes. The duration of period may be varied over the M Bus or the optical interface within a range of 1 min – 1440 min (= 1 day).

### 7.3.5 Operating trouble alarm (display level 2)

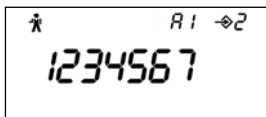
In case of operating trouble, CF Echo II displays a symbol "  ". When this trouble alarm appears, maintenance should be called. CF Echo II shows detailed information concerning operating troubles in special display levels (cf. description of display).



#### Display level operation shut down code

##### A0 = trouble with temperature recording

- 1 = supply temperature probe is not connected, pipe is interrupted or broken
- 2 = return temperature probe is not connected, pipe is interrupted or broken
- 3 = negative temperature difference; temperature probes were exchanged (except in case of combined heating/cooling metering)
- 4 = Analog to digital converter is broken (instrument must be replaced)



#### Display level operation shut down code (optional)

##### A1 = trouble with flow measurement

- 1 = backflow in meter or in pipe system
- 2 = air in the pipe system, broken ultrasound probes or very strong deposits on the probes (cleaning or inspection required)
- 3 = exceeding the maximum admissible flow
- \* this message is a warning and does not cause measurement shut down.
- 4 = connection cable with flow transponder or connection to the ultrasound probes has been disconnected.
- 5 = no flow for > 24 hours, but  $\Delta T > 15\text{ K}$
- 6 = no data communication between integrator and flow meter
- 7 = problem with the option board

### 7.3.6 M Bus parameters (display level 2)

Representation of characteristic data for remote data readout over M Bus or optical interface.

### 7.3.7 Due day values (display level 3)

Representation of 13 end of the month values of the cumulated values for energy, volume, cooling energy (optional) and volume of the connected water meters, with time stamp and beginning with the value of the previous month.

## 8. Insert option boards

The function range of the integrator may be extended for data communication and data remote display by means of inserting different option boards. The following option boards are available:

- M Bus + 2 exterior water meters
- M Bus and energy + volume remote display
- LON + 2 exterior water meters
- Modem + 2 exterior water meters

Details concerning mounting and start up are described in the mounting and operating instructions of the corresponding option boards.

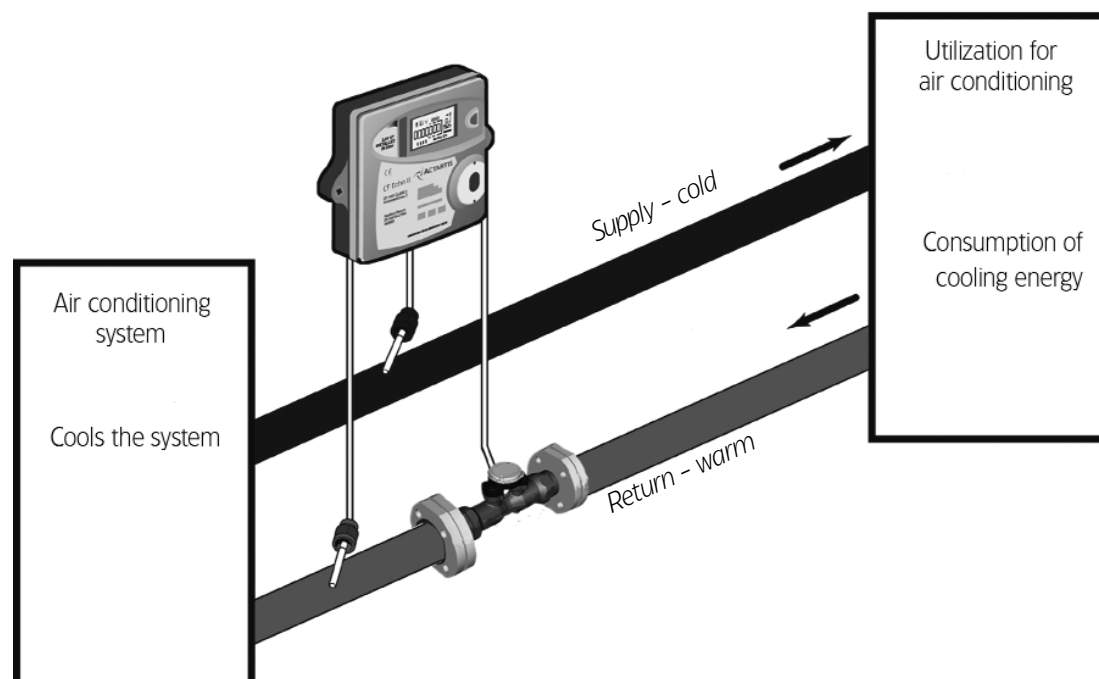
## 9. Special version for use in cooling and combined heating/cooling circuits

### 9.1 Meter for utilization in cooling circuits

For these types of products, the heat meter unit has been especially identified and programmed at the factory for utilization in cooling systems.

Handling, LC display and utilization of the option boards is essentially in accordance with the heat meter unit, all energy and power output related display values, M Bus data and remote display impulses being related to cooling energy.

The integrator is programmed for installation of the flow meter in the “warm” pipe of the cooling system (= return of the cooling system). A version programmed for the installation of the flow meter in the cold pipe also is available as an option.



## 9.2 Integrator for utilization in combined heating/cooling circuits

For these product versions, the integrator has been identified and programmed at the factory especially for utilization in air conditioning systems with combined heating and cooling operation.

Handling, LC display and utilization of the option boards is essentially in accordance with the heat meter. The following special characteristics must be taken into account:

Boundary conditions for the metering of heating and cooling energy

- Heating energy is measured as soon as the temperature difference  $\Delta T$  exceeds 0.5 K ( $\Delta T = \text{supply temperature } T_v - \text{return temperature } T_r$ ).
- Cooling energy is measured as soon as the temperature difference  $\Delta T$  remains below -0.5 K and flow temperature is less than 25 °C.

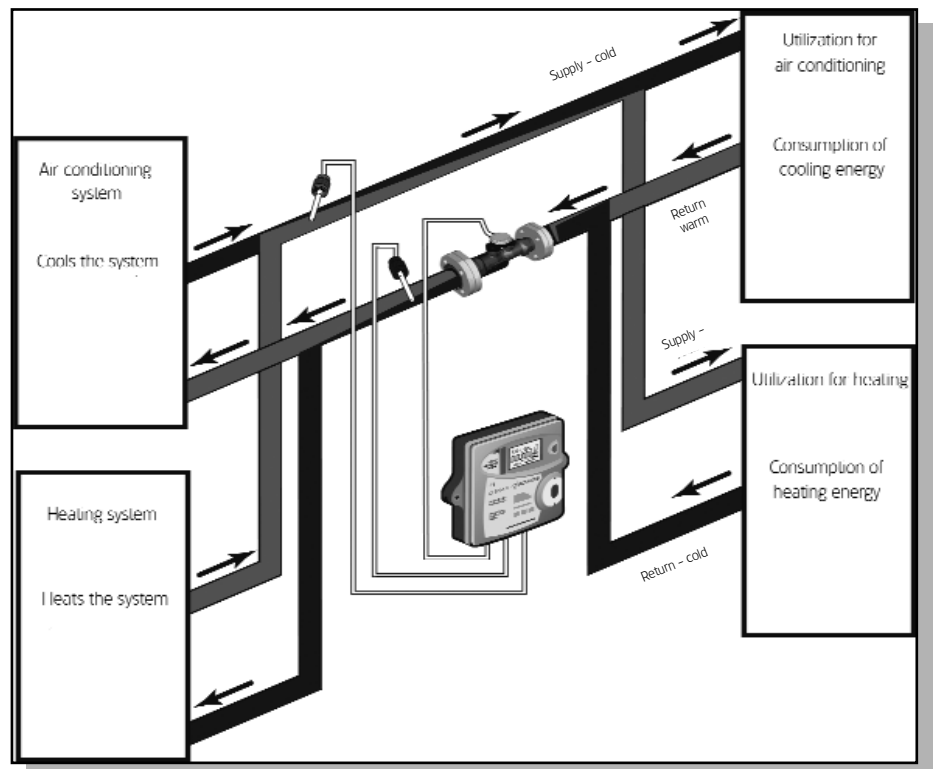
LC display

- Display of cooling energy is carried out in a supplementary register in the 1st display level. In order to differentiate from heating energy, a thermometer symbol being displayed simultaneously.
- 13 due day values (end-of-the-month values) for cooling energy may be called up in the 3rd display level.

Option boards for remote display

- The option board outputs are marked "E" (for energy) and "V" (for volume). For this type of product, pulses proportional to the cooling energy are output at the cooling energy output marked "V" –

This type of product is programmed for installation of the flow meter in the return pipe of the air conditioning system (= cold pipe during operation as heating, warm pipe during operation for cooling). A version programmed for the installation of the flow meter in the supply pipe also is available as an option.





Thank you for reading this data sheet.

For pricing or for further information, please contact us at our UK Office, using the details below.



**UK Office**

**Keison Products,**

**P.O. Box 2124, Chelmsford, Essex, CM1 3UP, England.**

**Tel: +44 (0)330 088 0560**

**Fax: +44 (0)1245 808399**

**Email: [sales@keison.co.uk](mailto:sales@keison.co.uk)**

Please note - Product designs and specifications are subject to change without notice. The user is responsible for determining the suitability of this product.