

***See your working environment  
in writing - keep a noise-log!***

# ***SoundLog***



***SoundLog is SoundEar®'s logbook.  
SoundEar® measures sound and SoundLog stores  
the information.***

# SoundEar®

Is a noise-measuring device created in a simple and user-friendly design. With SoundEar® in the room, you can keep track of when the noise level is too loud. That is why SoundEar® can be used as an educational tool towards a healthier sound environment.

## SoundLog

SoundLog is SoundEar®'s logbook. SoundEar® measures sound and SoundLog stores the information. Using the computer program that comes with SoundLog, you can see measurements carried out over a period of up to four weeks at a time on a ready-to-print graph. SoundLog consists of a new version of SoundEar®2000 with a built in log function.

### What can SoundLog be used for?

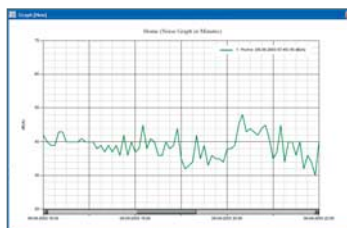
By printing off the sound measurements on a graph it is possible to see exactly how many decibels the sound level reaches and when. In this way, the graph can show where and when noise problems arise, and compare the sound conditions for different weekdays or times of day. The knowledge obtained from this graph makes it easier to accommodate periods of increased noise strain in advance.

SoundLog visualizes and documents the rooms' noise level, thus providing a qualified substitute for previous, less accurate, noise reports.

By describing the sound level for up to four weeks at a time, and thereby exposing repeated periods of increased noise strain, SoundLog is an important tool for improving overall well being within the working environment.



SoundLog consists of a new version of SoundEar®2000 with a built in log function.



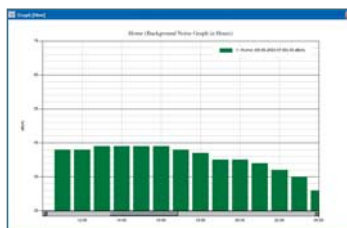
#### NOISE GRAPH:

A noise graph – choose between a display in minutes, hours, days or weeks. You can also choose to see or compare certain times, days or weeks e.g. Mondays between 8 a.m. and 4 p.m.



#### NOISE DOSE (A-weighted $L_{eq}$ ):

Noise dose is the noise level which people may be exposed to within an 8-hour working day. In USA and many other countries, the permitted level is 85 db(A) measured over a period of 8 hours. This diagram shows how much strain is put on your hearing during the time you spend in the room in question. Try it for example in the music room, in the workshop or in the office.



#### BACKGROUND NOISE:

The bar chart shows the noise that is left after the main noise sources e.g. hi-fi systems and machinery etc. are erased. Background noise is the lowest value measured. The level of background noise shows whether the noise problems actually arise from outside, which, particularly in educational environments, can be a great nuisance.



Thank you for reading this data sheet.

For pricing or for further information, please contact us at our UK Office, using the details below.



**UK Office**

**Keison Products,**

**P.O. Box 2124, Chelmsford, Essex, CM1 3UP, England.**

**Tel: +44 (0)330 088 0560**

**Fax: +44 (0)1245 808399**

**Email: [sales@keison.co.uk](mailto:sales@keison.co.uk)**

Please note - Product designs and specifications are subject to change without notice. The user is responsible for determining the suitability of this product.