

Dri-Block® heaters

Dri-Block® Heaters

Techne's Dri-block® heaters provide a safe, dry, constant temperature source in the laboratory. The units are particularly suitable for microbiology and clinical laboratories for incubation, boiling, inactivation, wet ashing, sample concentration, enzyme analysis and many other clinical and industrial purposes.

- Very accurate temperature control
- Analogue or digital control
- Choice of 2, 3 or 4 block format
- Wide range of interchangeable aluminium blocks
- Blocks available as accessories for all applications - tubes, vials and microplates
- Block extraction tool is supplied, allowing blocks to be removed easily
- 3-year warranty as standard

DB-2A

- Small, light and compact footprint, economical price
- Can hold up to 2 aluminium insert blocks or one 96-well plate block
- Analogue: temperature setting is by a calibrated dial
- Temperature range from ambient to 100°C or 200°C
- Fast heat-up rate from 30°C to 100°C in just 12 minutes
- Temperature stability at 40°C: $\pm 0.05^\circ\text{C}$

DB-2D & DB-2DH

- Bright orange LED digital display for fast and accurate setting of temperature
- RS232 connection available for PC control
- Can hold up to 2 aluminium insert blocks or one 96-well plate block
- Temperature range from ambient to 100°C
- Fast heat-up rate: 30°C to 100°C in just 12 minutes
- Temperature stability at 40°C: $\pm 0.05^\circ\text{C}$



DB-2A



DB-2D

Technical Specification

	DB-2A	DB-2D	DB-2DH
Temperature range	Ambient to 100°C	Ambient to 100°C	Ambient to 200°C
Temperature stability @ 40°C	$\pm 0.05^\circ\text{C}$	$\pm 0.05^\circ\text{C}$	$\pm 0.1^\circ\text{C}$
Temperature stability @ 100°C	$\pm 0.1^\circ\text{C}$	$\pm 0.15^\circ\text{C}$	$\pm 0.15^\circ\text{C}$
Temperature setting	Rotary knob	Push Button	Push Button
Temperature display	-	Orange LED	Orange LED
Temperature scale graduation	2°C	No graduation	No graduation
Maximum temperature variation between identical blocks @ 40°C	0.2°C	0.2°C	0.2°C
Set point accuracy	$\pm 2^\circ\text{C}$	$\pm 1^\circ\text{C}$	$\pm 1^\circ\text{C}$
Maximum number of blocks	2	2	2
Heat up time, @ 30-37°C	8 minutes	8 minutes	11 minutes
Heat up time, @ 30-56°C	9 minutes	9 minutes	15 minutes
Heat up time, @ 30-Max.	12 minutes	12 minutes	25 minutes
RS232 option available	No	Yes	Yes
Heater power	300W	300W	300W
Dimensions L x W x H (mm)	202 x 260 x 105	202 x 260 x 105	202 x 260 x 105
Voltage	230V, 50-60 Hz	230V, 50-60 Hz	230V, 50-60 Hz
Shipping Weight	4 kg	5 kg	5 kg

Ordering Information

Product Code	Description
FDB02AD	DB-2A ambient to 100°C, requires 2 insert blocks
FDB02DD	DB-2D ambient to 100°C, requires 2 insert blocks
FDB02HDD	DB-2DH ambient to 200°C, requires 2 insert blocks
FDB02DDR	DB-2D + RS232 ambient to 100°C, requires 2 insert blocks



DB-3

DB-3

- The DB-3 is designed to hold up to 3 aluminium insert blocks or one 96-well plate block
- Analogue: temperature setting is by a calibrated dial
- Temperature range from ambient to 100°C
- Fast heat-up rate: 30°C to 100°C in just 18 minutes
- Temperature stability at 40°C: $\pm 0.05^\circ\text{C}$

DB-3A

- Temperature range from ambient to 200°C for higher temperature applications
- Can hold up to 3 aluminium insert blocks or one 96-well plate block
- Analogue: temperature setting is by a calibrated dial
- Powerful heater for fast heat-up rate: 30°C to 200°C in just 30 minutes
- Temperature stability at 40°C: $\pm 0.1^\circ\text{C}$

Technical Specification

	DB-3	DB-3A
Temperature range	Ambient to 100°C	Ambient to 200°C
Temperature stability @ 40°C	$\pm 0.05^\circ\text{C}$	$\pm 0.01^\circ\text{C}$
@ 100°C	$\pm 0.1^\circ\text{C}$	$\pm 0.15^\circ\text{C}$
Temperature setting	Rotary knob	Rotary knob
Temperature scale graduation	2°C	2°C
Maximum temperature variation between identical blocks @ 40°C	0.2°C	0.2°C
Set point accuracy	$\pm 2^\circ\text{C}$	$\pm 2^\circ\text{C}$
Maximum number of blocks	3	3
Heat up time		
30-37°C	8 minutes	8 minutes
30-56°C	12 minutes	12 minutes
30-Max.	18 minutes	30 minutes
RS232 option available	No	No
Heater power	450W	450W
Dimensions L x W x H (mm)	279 x 260 x 105	279 x 260 x 105
Voltage	230V, 50-60Hz	230V, 50-60Hz
Shipping Weight	6kg	6kg



DB-3A

Ordering Information

Product Code	Description
FDB030D	DB-3 ambient to 100°C, requires 3 insert blocks
FDB03AD	DB-3A ambient to 200°C, requires 3 insert blocks



DB-2TC

DB-2TC, Twin Control

A new Dri-Block[®] heater with an innovative design accommodating two blocks with independent digital temperature controls. Each block can be set at different temperatures - ideal for multiple users or for applications where samples have to be transferred between two temperatures very quickly.

The compact, robust design also allows the unit to be placed in fume cabinets where corrosive/toxic chemicals are used.

Operating over the temperature range of ambient to 100°C the unit has an impressive heat up rate and highly accurate thermal control with temperature stability of $\pm 0.1^\circ\text{C}$.

- Ideal for multiple users or applications
- Two blocks with independent temperature controls
- Can hold up to 2 aluminium insert blocks
- 4-digit setting with bright orange LED digital displays for fast and accurate setting of temperature
- Powerful heater for fast heat-up rate: 30°C to 100°C in just 19 minutes
- Temperature range from ambient to 100°C
- Temperature stability at 40°C: $\pm 0.1^\circ\text{C}$

Technical Specification

	DB-2TC
Temperature range	Ambient to 100°C
Temperature stability @ 40°C	$\pm 0.1^\circ\text{C}$
Temperature setting	Push button
Temperature display	Orange LED, 4 digits
Uniformity within block at 40°C	$\pm 0.1^\circ\text{C}$
Uniformity within block at 100°C	$\pm 0.1^\circ\text{C}$
Display resolution	0.1°C
Set point accuracy	$\pm 1^\circ\text{C}$
Maximum number of blocks	2
Heat up time, minutes	30-37°C: 6 minutes 30-56°C: 14 minutes 30-Max.: 19 minutes
Dimensions L x W x H (mm)	279 x 260 x 105
Voltage	230V, 50-60 Hz
Power	2 x 150W
Shipping Weight	5kg

Ordering Information

Product Code	Description
FDB02DDTC	DB-2TC ambient to 100°C, requires 2 insert blocks

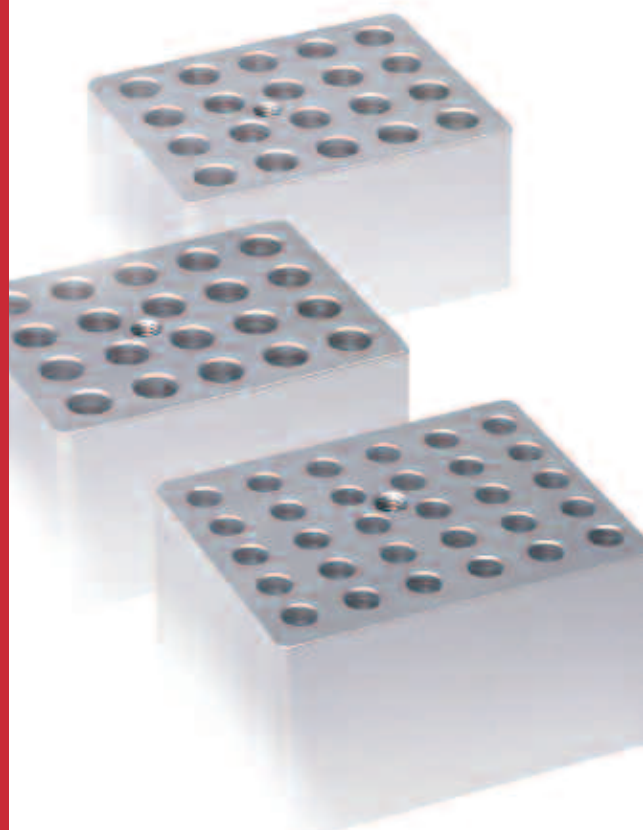
Dri-block® heaters

Accessories, Interchangeable Blocks

For use with Techne® block heaters. Manufactured from anodised aluminium and all with a separate hole to accommodate a thermometer if desired. All blocks have dimensions (d x w x h) 95 x 76 x 51 mm and can be used in any combination (except 96-well blocks).

Aluminium Insert Blocks

Product Code	Tube Size (diam)	Number of Holes	Size d x w x h (mm)
F3501	Plain Block	None	95 x 76 x 51
F3502	6mm	30	95 x 76 x 51
F3503	10mm	20	95 x 76 x 51
F3504	12mm	20	95 x 76 x 51
F3505	13mm	20	95 x 76 x 51
F3506	15mm	12	95 x 76 x 51
F3507	16mm	12	95 x 76 x 51
F3508	19mm	8	95 x 76 x 51
F3509	25mm	6	95 x 76 x 51
F3510	10mm cuvettes	2 channels	95 x 76 x 51
F3512	Plain block	thermometer hole only	95 x 225 x 51
F4460	Plain block	thermometer hole only	95 x 76 x 51
F4461	7 and 9 mm	20/10	95 x 76 x 51
F4462	24mm	6	95 x 76 x 51
F4463	26mm	6	95 x 76 x 51
F4464	microcentrifuge 1.5ml tubes	20	95 x 76 x 51
F4465	0.5ml microtubes	30	95 x 76 x 51
F4466	Plastic spacer	None	95 x 37 x 51
F4467	Hi-Temp 96 block	96	95 x 151 x 61
F4468	Falcon round bottom plate block	96	95 x 151 x 61
F4469	Falcon flat bottom plate block	96	95 x 151 x 61
F4470	microcentrifuge 2.0ml tubes	20	95 x 76 x 51
F4471	0.2ml microtubes	72	95 x 76 x 51
F4473	Block for 96 x 0.2ml microtubes	96	95 x 151 x 61
F4474	1.0ml Porvair Plate	96	95 x 151 x 48
F4476	Block for Gelation Timer	1 sample cup	95 x 76 x 51



Aluminium Blocks

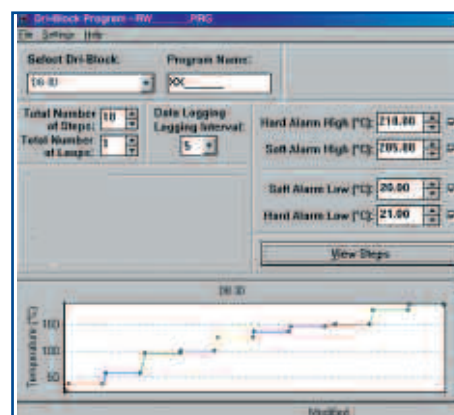
DBsoft Software DB-2D/3D/4D

DBsoft has been designed for use with Dri-Block® models DB-2D, DB-3D and DB-4D with the RS232 option. DBsoft is a Windows® based program that connects via an RS232 connection to your computer.

Programs can be created, saved and loaded at any time as well as running in real time mode. Definable parameters include time, temperature and ramp rates. Temperatures within the range of ambient to 200°C can be programmed.

DBsoft enables you to:

- Create, open, save and print programs
- Open, save, print and view logged data as a line graph
- Open, print and view logged data in a text format
- Create calibration certificates
- Run a program in real-time mode
- Send programs to the Dri-Block®
- Retrieve programs and test results from the Dri-Block®
- Erase test results
- Password protect programs



DBsoft

Ordering Information

Product Code	Description
FDBSOFT	DBsoft software for DB-2D/3D/4D



Thank you for reading this data sheet.

For pricing or for further information, please contact us at our UK Office, using the details below.



UK Office

Keison Products,

P.O. Box 2124, Chelmsford, Essex, CM1 3UP, England.

Tel: +44 (0)1245 600560

Fax: +44 (0)1245 600030

Email: sales@keison.co.uk

Please note - Product designs and specifications are subject to change without notice. The user is responsible for determining the suitability of this product.