

**3 way programmable proportional
pressure control valve
G 1/4 or 1/4 NPT and manifold
Nominal orifice 4**

- Closed-loop air piloted digital proportional pressure control valve**
- Ability to set up offline**
- Fully programmable with on-board diagnostics**
- Multi option language display**
- High flow**
- Excellent performance characteristics**
- Adjustable gain**
- Instant LED warning lights**
- Pressure output display**
- Fast response time**
- Low power consumption**



Technical Data

Medium:
Compressed air filtered to 5 µm, dry and non-lubricated
Operation:
Air piloted spool valve with integrated electronic pressure control
Output pressure:
0 to 6 bar, 0 to 10 bar (or PSI equivalent)
Supply pressure:
Minimum 2 bar above maximum output required,
14 bar max.
Supply sensitivity:
Better than 0,75% span output change per bar supply pressure change
Flow:
Up to 1400 N l/min (see characteristic curves)
Air consumption:
< 5 N l/min
Ambient temperature:
0°C to +50°C
Contact our technical service for use below +2°C
Temperature effect:
Typically better than 0,03% of span/°C for span and zero over operating range
Response time:
< 100 ms (from 10 to 90% of output pressure into a 0,1 litre load)
Degree of protection:
IP65 in normal operation
Linearity:
< 50 mbar
Hysteresis:
< ±50 mbar
Vibration immunity:
< 3% output shift for ± 3 g 10-150 Hz
Weight:
0,80 kg

Materials:

Body: aluminium
Lid and end cover: zinc diecast, nylon

Electrical parameters

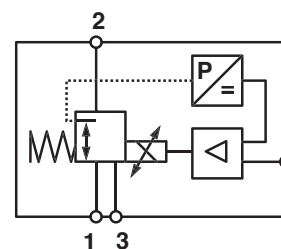
see page 2

Ordering information

See page 2

Alternative models

ISO 2 manifold version, with adaptor plate



Electrical parameters

Electromagnetic compatibility	CE marked: conforms to EC requirements EN 50081-2 (1994) and EN 50082-2 (1995)
Electrical input signal	4 to 20 mA or 0 to 10 V factory set
Electrical power input	24 V d.c. $\pm 25\%$ (power consumption < 1 W)
Output pressure feedback signal	0 ... 10 V full range
Connections	M12x1, 5-pin

User functionality options

Password protection	
Display set-up	Pressure units
Offline set-up	Max./min. setpoints Speed setting (0 to 7) Dither amp (0 to 7) Proportional gain (0 to 7) Integral gain (0 to 7)
Online set-up	Max./min. setpoints
Monitor set-up	Analogue/switched LED configuration
Local control	Manual pressure control
Device database	Read only data: unit specific Tag number Change password
Factory defaults	Restore factory defaults

Options selector

VP51 ★ ★ ★ ★ ★ 11 H 00

Control signal	Substitute
0 ... 6 bar/90 psi	06
0 ... 10 bar/150 psi	10

Unit for pressure	Substitute
Bar	B
PSI	P

Input signal	Substitute
0 ... 10 V	1
4 ... 20 mA	4

Ports size	Substitute
G 1/4	J
NPT 1/4	K
Manifold	X

Other versions on request

Ordering example

Proportional pressure control valve, output 0-6 bar,
port size G1/4, input signal 4 ... 20 mA

Please note: An wireable straight connector

(M12x1, 5 pin) is included

Quote: VP5106BJ411H00

Connecting plugs

Straight connector M 12 x 1



page 7

0523822 (5-pin, 5 m cable, 5 x 0,34 mm²)

-

-

Elbow connector M 12 x 1



page 7

0250081 (5-pin, 5 m cable, 5 x 0,34 mm²)

0250472 (5-pin, 10 m cable, 5 x 0,34 mm²)

0252543 (5-pin, wireable)

Manifold mount assembly to ISO 2 sub base

Single manifold

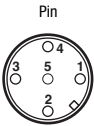


page 4

ZZ5M00

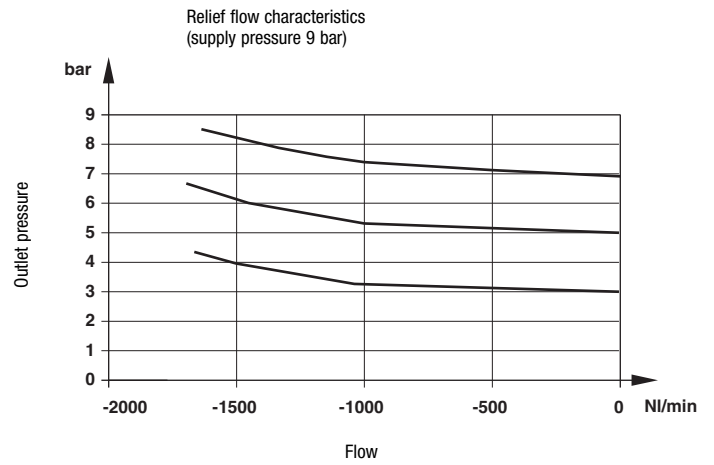
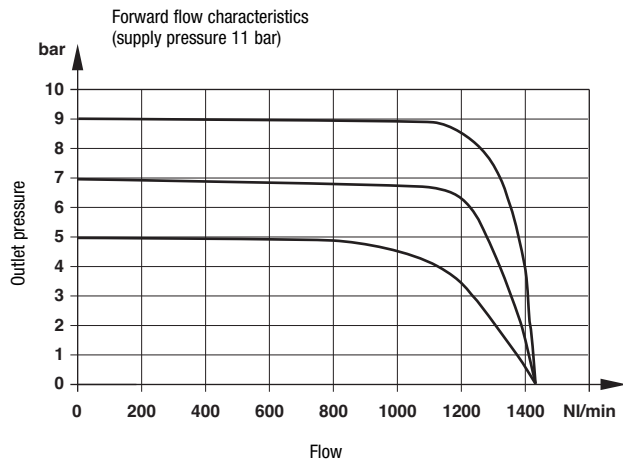
O-rings, flat seal and screws are included

Electrical connector pin looking into the end of the instrument

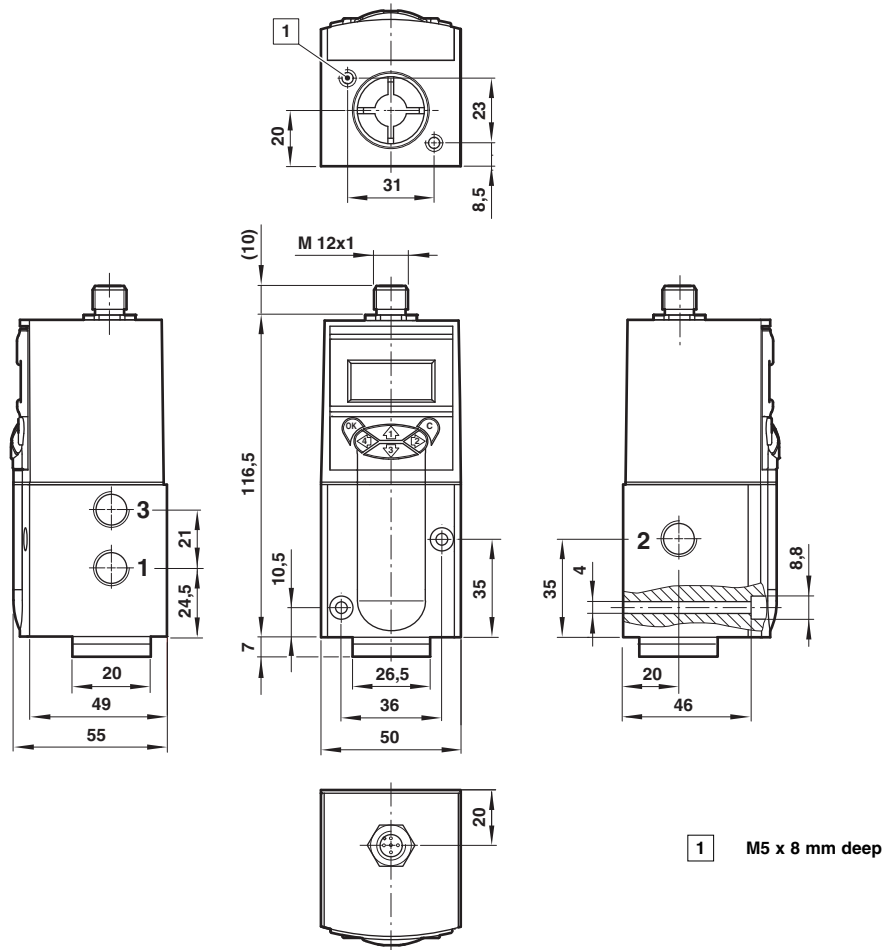


Pin- No.	Function
1	+24 V d.c. supply
2	0 ... 10 V feedback
3	Control signal (+VE)
4	Common (supply signal and feedback return)
5	Chassis

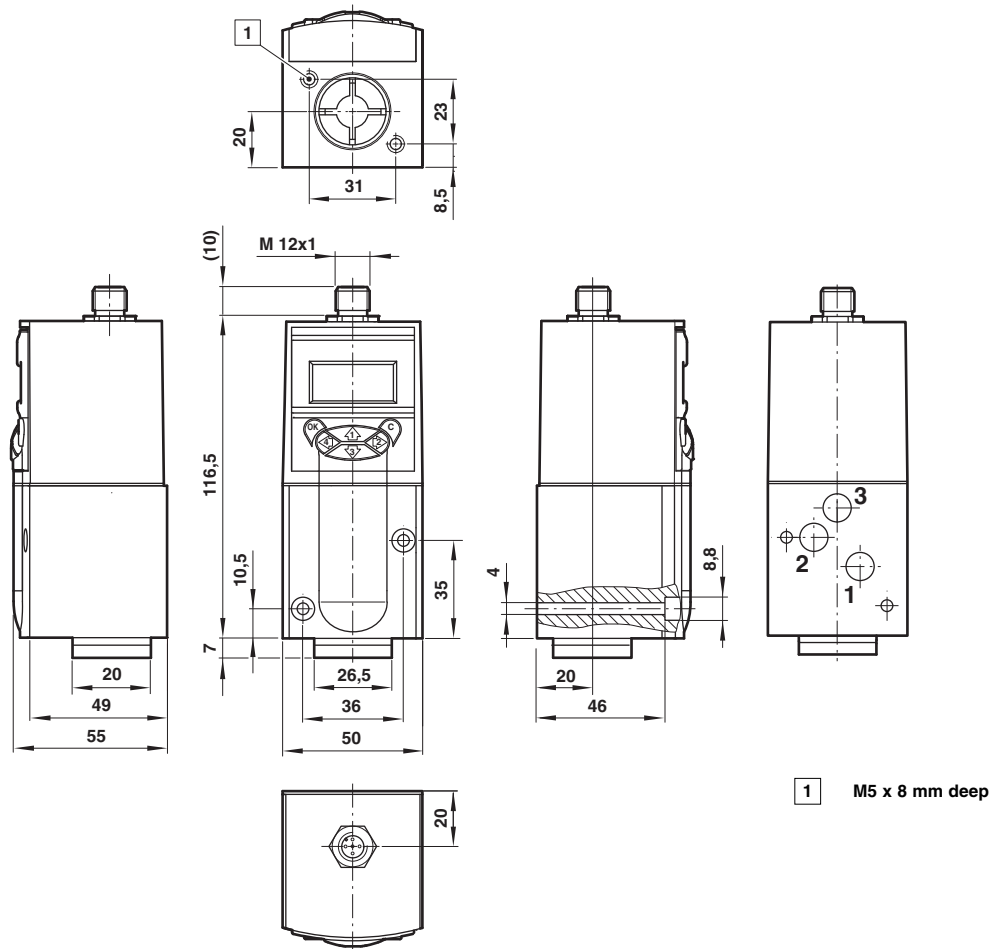
Characteristics curves



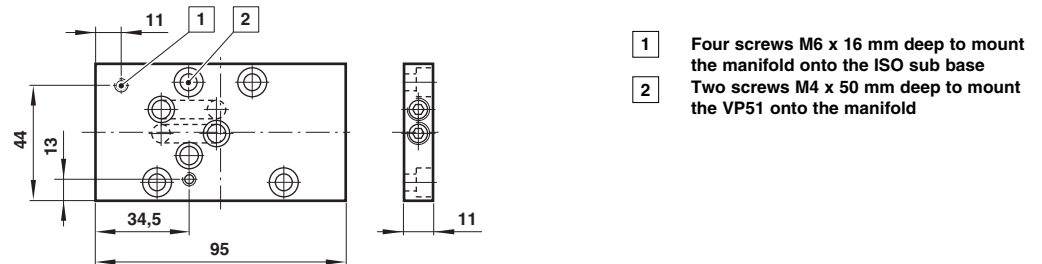
Basic dimensions

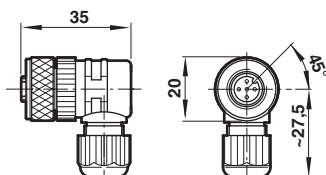
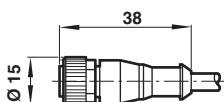
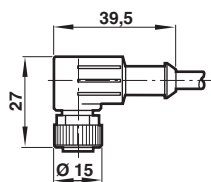


VP51 with manifold surface



Manifold mount assembly to ISO 2 sub base
Included all seals and screws



Connector**Connector, 90°**

M12 x 1, 5-pin, female, A coded and
5 m cable length

Model: 0250081

M12 x 1, 5 pin, female, A coded and
10 m cable length

Model: 0250472

Connector, straight

M12 x 1, 5-pin, female, A coded and
5 m cable length

Model: 0523822

Connector, 90°

M12 x 1, 5-pin, female, A coded

Model: 0252543



Thank you for reading this data sheet.

For pricing or for further information, please contact us at our UK Office, using the details below.



UK Office

Keison Products,

P.O. Box 2124, Chelmsford, Essex, CM1 3UP, England.

Tel: +44 (0)1245 600560

Fax: +44 (0)1245 600030

Email: sales@keison.co.uk

Please note - Product designs and specifications are subject to change without notice. The user is responsible for determining the suitability of this product.