

Rod length	Rod diameter	Thread diameter	Conductor material	Weight per rod	Part no.
500mm	15mm	16mm	Copper	0.73kg	RA215
1000mm	15mm	16mm	Copper	1.51kg	RA225
2000mm	15mm	16mm	Copper	3.00kg	RA240



Can be installed with or without multiple point.
Supplied with locknut.

Multiple point

Rod diameter	Material	Weight each	Part no.
15mm	Copper	0.27kg	RA600

For use with taper pointed air rods.



Blunt air rod

Rod length	Rod diameter	Thread diameter	Material	Weight per rod	Part no.
500mm	15mm	16mm	Copper	0.73kg	RAD215
1000mm	15mm	16mm	Copper	1.51kg	RAD225
2000mm	15mm	16mm	Copper	3.00kg	RAD240
500mm	16mm	16mm	Aluminium	0.29kg	RAD015
1000mm	16mm	16mm	Aluminium	0.53kg	RAD025
2000mm	16mm	16mm	Aluminium	1.06kg	RAD040

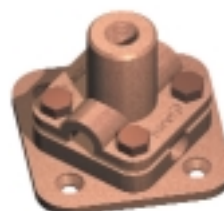
Supplied with locknut.

“Field trial tests in the United States, carried out over many years research have confirmed that blunt air rods are struck by lightning in preference to taper pointed air rods.”

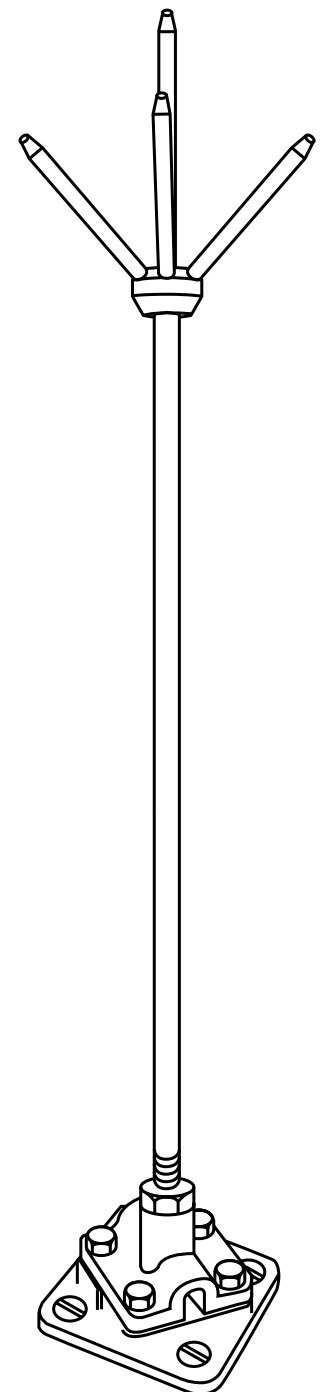
Reference: “Lightning rod improvement studies” by C B Moore, W Rison, J Mathis, G Aulich. Journal of Applied Meteorology, May 2000.

Flat saddle

Rod length	Rod diameter	Thread diameter	Conductor material	Weight per rod	Part no.
50mm	15mm	16mm	Copper	1.03kg	SD155
70mm	15mm	16mm	Copper	0.95kg	SD160
95mm	15mm	16mm	Copper	0.95kg	SD165

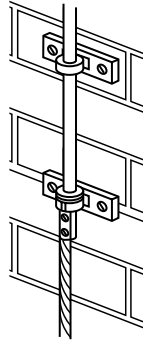


For supporting taper pointed or blunt air rods on flat surfaces.
Recommended fixing - counter sunk woodscrew 1 1/2" x no.10 and wall plug.



Rod brackets

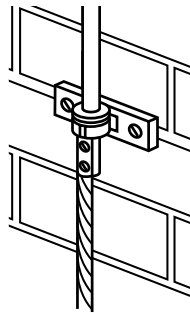
Air terminals and fixings



Air rod diameter	Rod material	Weight each	Part no.
15mm	Copper	0.90kg	BR105
15mm	Aluminium	0.28kg	BR005

For wall mounted air terminals.
Recommended fixing - round head woodscrew 1 5/8" x no.16 and wall plug.

Rod to cable coupling



Air Rod diameter	Thread diameter	Conductor size	Conductor material	Weight per rod	Part no.
15mm	16mm	50 - 70m ²	Copper	0.25kg	CG705
15mm	16mm	95m ²	Copper	0.25kg	CG710

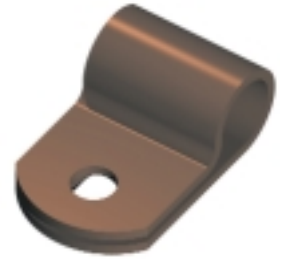
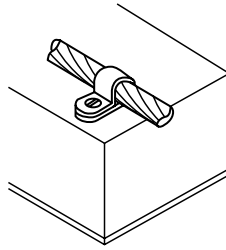
Used in conjunction with rod brackets above.

Conductor fixings

One hole cable clip

Conductor size	Conductor material	Weight each	Part no.
50mm ²	Copper	0.01kg	CP910
70mm ²	Copper	0.01kg	CP915
95mm ²	Copper	0.01kg	CP920

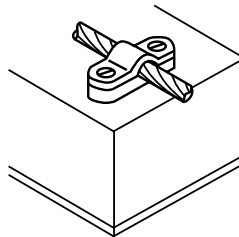
Recommended fixing - round head woodscrew 1 1/2" x no.10 and wall plug.



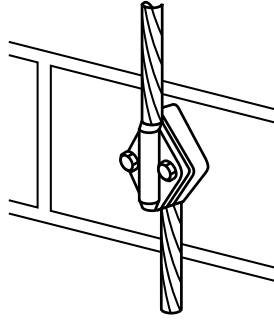
Heavy duty cast cable saddle

Conductor size	Conductor material	Weight each	Part no.
50mm ²	Copper	0.10kg	CP810
70mm ²	Copper	0.10kg	CP815
95mm ²	Copper	0.10kg	CP835

Recommended fixing - counter sunk woodscrew 1 1/2" x no.10 and wall plug.



Test clamp



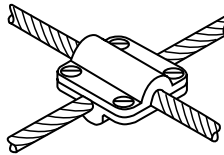
Test and junction clamps

Conductor size	Conductor material	Weight each	Part no.
50mm ²	Copper	0.39kg	CR855
70mm ²	Copper	0.40kg	CR860
95mm ²	Copper	0.40kg	CR865

Recommended fixing - counter sunk woodscrew 1 1/2" x no.10 and wall plug.

For forming end to end joints.

Square conductor clamp

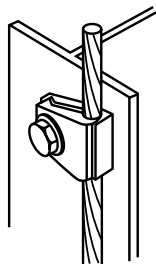


Conductor size	Conductor material	Weight each	Part no.
50mm ²	Copper	0.32kg	CR810
70mm ²	Copper	0.29kg	CR815
95mm ²	Copper	0.25kg	CR820

Recommended fixing - counter sunk woodscrew 1 1/2" x no.10 and wall plug.

For forming straight through cross or tee joints in cable.

Tower earth clamp



Bonds and clamps

Conductor size min	Conductor size max	Channel thickness	Bolt size	Conductor material	Weight each	Part no.
16mm ²	70mm ²	10mm	M10	Copper	0.13kg	BN125
70mm ²	120mm ²	10mm	M12	Copper	0.22kg	BN130

For bonding copper cable to steel structures.