

STR4



Rotator, drive unit,

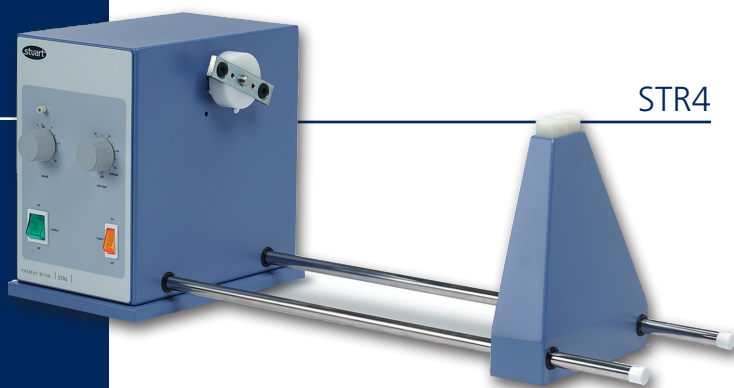
The STR4 rotator drive unit is used in conjunction with a wide range of drums designed to take different sizes and types of vessels. The five drums are designed to give different mixing actions and are listed on pages 76 to 78.

Speed of rotation is variable from 6 to 60rpm for a range of mixing applications.

For added convenience a built in analogue timer can be set from 10 to 60 minutes. Alternatively the unit can be set for continuous operation.

Technical Specification

Maximum load, kg	3
Rotation speed	6 to 60rpm
Dimensions, mm (w x d x h)	650 x 250 x 250
Net weight, kg	6.4
Electrical Supply	230V, 50Hz, 50W
IP Rating	31



STR4

Ordering Information

Model	Description
STR4	Rotator drive

(n.b. vessel holding drum not included and must be ordered separately)

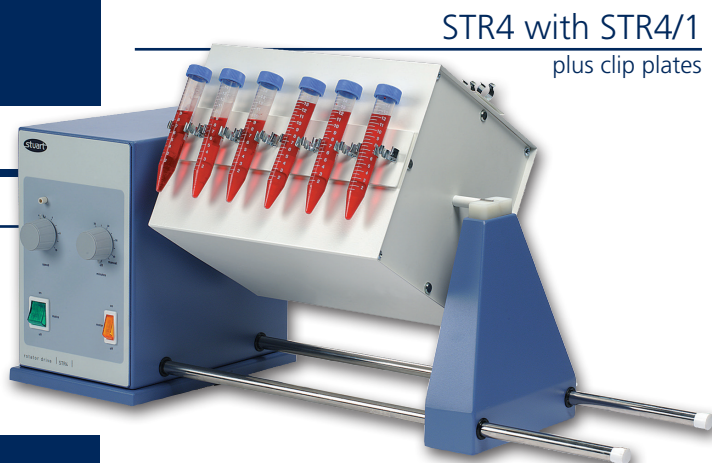
STR4/1

Drum, test-tube holder,

Designed to rotate test-tubes in an end-over-end movement. Comprises a square metal drum which can accommodate a choice of plates fitted with tube clips. Up to four plates can be mounted on the drum. Easy fitting via a push button mechanism.

Ordering Information

Model	Description
STR4/1	Drum to hold test tube clip plates
STR1/1	Clip plates for 12 x 12mm tubes (per pair)
STR1/2	Clip plates for 10 x 16mm tubes (per pair)
STR1/3	Clip plates for 8 x 19mm tubes (per pair)
STR1/4	Clip plates for 7 x 24mm tubes (per pair)



STR4 with STR4/1
plus clip plates

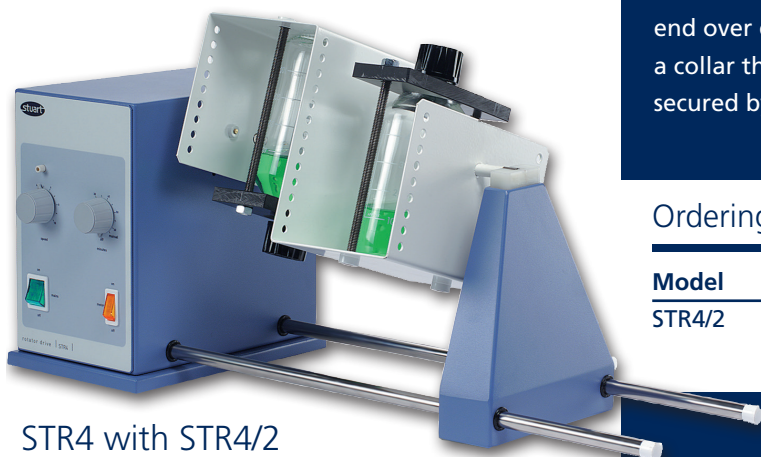
STR4/2

Drum, two platforms

This drum accepts 2 x 250ml conical flasks or reagent bottles for end over end mixing. The samples are securely held in place by a collar that fits around the neck of the flask or bottle and is secured by two washers.

Ordering Information

Model	Description
STR4/2	Drum with two platforms to hold flasks or bottles



STR4 with STR4/2

STR4/3

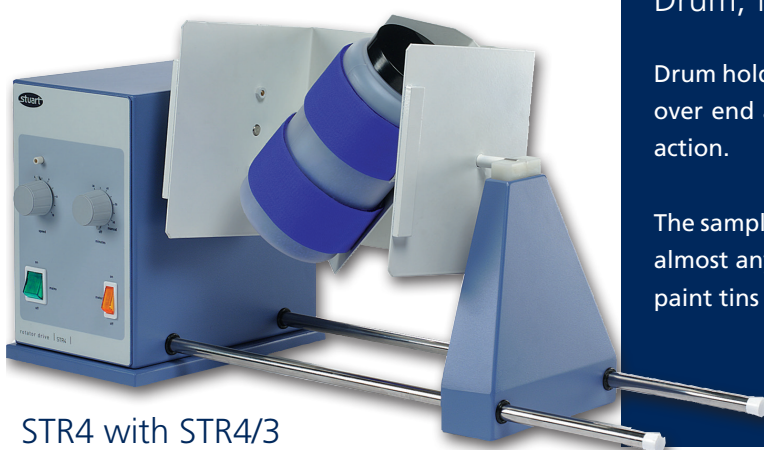
Drum, figure 8,

Drum holds the vessel at a 45° angle so it is rolled and turned end over end at the same time giving a vigorous figure of 8 mixing action.

The sample container is retained by a strong Velcro strap. Accepts almost any container including reagent bottles, powder jars and paint tins up to 200mm in length and 120mm diameter.

Ordering Information

Model	Description
STR4/3	Drum with figure 8 mixing action



STR4 with STR4/3

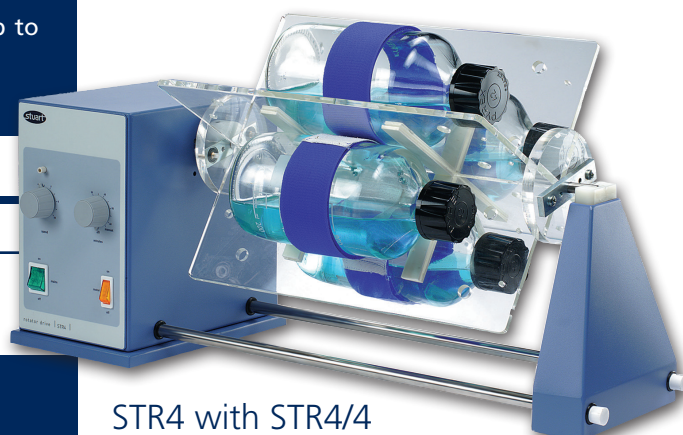
STR4/4

Drum, bottle holder,

This drum consists of a four segment Perspex® cradle. Each segment is fitted with a fully adjustable Velcro® strap to hold bottles and other containers up to 120mm diameter and up to 300mm in length.

Ordering Information

Model	Description
STR4/4	Drum with four segment cradles holding up to four bottles



STR4 with STR4/4

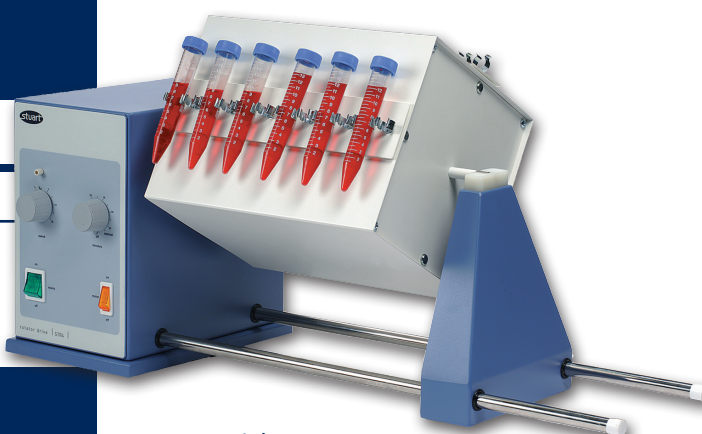
STR4/5

Drum, microcentrifuge tube,

Designed to rotate test-tubes in an end-over-end movement. Comprises a square metal drum which can accommodate a choice of plates fitted with tube clips. Up to four plates can be mounted on the drum. Easy fitting via a push button mechanism.

Ordering Information

Model	Description
STR4/5	Drum with four segment cradles and four tube racks
SW2/1	Spare rack for 60 x 1.5ml tubes



STR4 with STR4/5



Thank you for reading this data sheet.

For pricing or for further information, please contact us at our UK Office, using the details below.



UK Office

Keison Products,

P.O. Box 2124, Chelmsford, Essex, CM1 3UP, England.

Tel: +44 (0)330 088 0560

Fax: +44 (0)1245 808399

Email: sales@keison.co.uk

Please note - Product designs and specifications are subject to change without notice. The user is responsible for determining the suitability of this product.