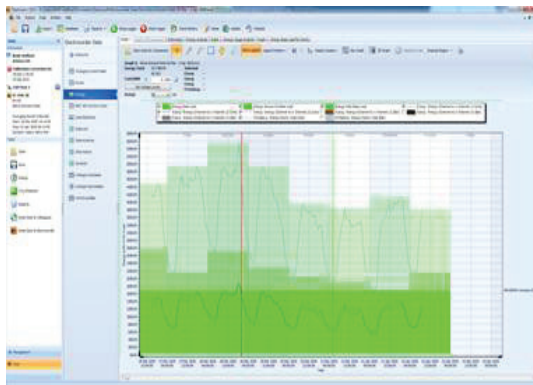
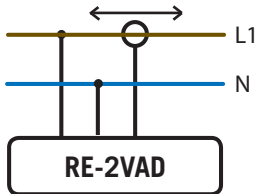


ELECTROCORDER

Model: RE-2VAD

Single Phase Voltage Directional Current Logger



- Allows users to monitor local generation and demand.
- One voltage input (L1), one directional current input (A1).
- Records imported and exported power.
- Data stored in non-volatile memory.
- Free software, Electrosoft.
- Recorded data is uploaded via USB to a PC for analysis with Electrosoft.

One voltage channel 300Vac, One current channel +/-30Aac

Constant Sampling technique; misses very little data

Complete with Electrosoft energy analysis software

Available as IP65/NEMA 12/4



- Kit includes Logger, Voltage input lead, one clamp-on CT, USB lead, software CD and carry case.
- Memory capacity of 32,000 (true RMS) values per channel (10bit), up to 300 days continuous recording
- Selectable averaging period to suit each situation, accurate to $\pm 3\%$ of reading.
- Order code:-
RE-2VAD-5H-UK-IP43-KIT (50Hz)
RE-2VAD-5H-EU-IP43-KIT (50Hz)
RE-2VAD-5H-ZA-IP43-KIT (50Hz)
RE-2VAD-5H-AZ-IP43-KIT (50Hz)
RE-2VAD-6H-NA-IP43-KIT (60Hz)

ELECTROCORDER

Model: RE-2VAD

The RE-2VAD is designed to allow users to monitor single phase current import or export from local generation to and from the grid.

Setting up the ElectroCorder RE-2VAD is easy, suitable for semi-technical staff. Using the supplied (free) Windows software, Electrosoft; the location's details are input to the unit's memory and stored. Electrosoft will then print documentation allowing users to record and/or pass on delivery instructions to colleagues. All data is also stored in a database of dispatches and returns, which tracks the whereabouts of all units.

Why is the ElectroCorder better than other similarly priced competitors? The ElectroCorder range use a constant sampling technique, unlike the single reading of competitors. When the loggers start to record, they sample every channel 16 times per cycle, a cycle is 16ms at 60Hz and 20ms at 50Hz. At the end of each averaging period, 3 quantities are saved for each channel, the True RMS average, the Max, which is the highest cycle value during the period and the Min, lowest cycle value. This means that it will record all the peaks and troughs which are one cycle or longer.

The voltage and current levels are stored with dates and times. With the backup battery, the ElectroCorder can continue to record for a year. On the logger, recording is signified by a flashing green light. A red light advises users that the unit has completed recording.

When the logger has finished logging, the stored data is uploaded to a PC via the supplied USB cable. Using Electrosoft, the recorded voltage and current levels, dates & times can be viewed in both tabular and graphical form, exported to a spreadsheet or saved to file.

Graphs can be printed showing the recorded levels and the allowable tolerance bands. These results may then be discussed with the customer. Electrosoft also provides an internal database which effectively manages the distribution of multiple units.

This model is specifically designed to monitor one voltage channel and the direction and magnitude of one current channel. Allowing you to monitor the main voltage supply and the direction of current, enabling you to see when you have exported power and when you have imported power.

There are many models of ElectroCorder, to suit many logging situations and user's requirements.

TECHNICAL SPECIFICATIONS (subject to change without notice)

Measurement range (Vrms)	0Vac to 300Vrms
Maximum channel input voltage	300Vrms
Voltage Input	One voltage input (L1)
Voltage measurement accuracy	±2% of reading (10 bit) within 90Vac - 300Vrms otherwise ±3%. (50/60Hz ±2%)
V _{min} , V _{max} , I _{max} & I _{min} time resolution	Always one cycle (50/60 Hz), independent of selected averaging period
Current measurement range (Irms)	0.2 to 30A, other ranges can be factory set
Current Input	One current input (A1)
Current measurement accuracy	3% of range, typically
Current sensor dimensions	Diameter when closed – 30mm or 1.2"
Sampling frequency (all channels)	16 samples per cycle 800Hz @ 50Hz or 960Hz @ 60Hz
Data recorded	Average, max & min voltage & current values during the averaging period
Memory capacity	128kB able to record 32,000 Voltage & Current levels per channel
Memory type	Non-volatile EEPROM
Memory - averaging period & duration	1 sec to 60 mins (1 sec gives 2 hrs logging, 60 min gives 300 days logging)
Real-time clock accuracy	Greater than 0.001%
Input Lead Length	Metric 2 metres Imperial/English 6' 6" (6 feet, 6 inches)
Battery life (while plugged in)	Unlimited – While unplugged battery life is typically 9,000 hours/1 year
Battery Type	Unit contains four 9V Alkaline battery (E-Block, PP3, 1604A)
Communications Interface type	USB, baud of 19,200, optically isolated to 5.2kV
Environmental (temp & sealing)	-10C to +40C or +14°F to +104°F – IP65, NEMA 12/4
Dimensions & Weight	Metric 250 x 175 x 70mm & 500g Imperial/English - 10" x 6" x 3" & 1lb
Standards	Recording - EN50160: 1994 - CAT III, maximum input voltage 300Vac rms

WARRANTY & CALIBRATION - All Acksen Ltd products carry a minimum of a one year's back to base warranty covering manufacturing defects and component failures. Each unit is individually calibrated during testing.

CONFORMITY - Emissions EN55022:1994B, (EN50081-1:1992). Immunity EN50082-2:1995, following the provisions of EMC directive 89/336/EEC. Recording std EN50160:1994. LVD 72/23/EEC with respect to EN60065. (IEC-61010). All models certified (light industrial, 3V/m).

ORDERING - RE-2VA-*H-XX-IP43-KIT – includes logger (1), voltage input lead (1), one clamp-on CT (1), USB lead (1), software CD (1) and carry case (1).

	Description	ENVIRONMENTAL SEALING	ORDER CODE
1	KIT inc. items 2-5 RE-2VAD-*H-XX(* - 5/6 for 50/60Hz, XX - Plug)	Protected or indoor only	RE-2VAD-*H-XX-IP43-KIT
2	Replacement – Logger Unit (* 5/6 for 50/60Hz)	Protected or indoor only	CT-2VA-*H-XX-LOG
3	Replacement - USB Lead	Protected or indoor only	EC-USBAAL-02
4	Replacement – Batteries (4 per unit)	Internal to logger	RE-2VAD-BAT
5	Replacement Current Transformer	Protected or indoor only	EC-CT97B



Thank you for reading this data sheet.

For pricing or for further information, please contact us at our UK Office, using the details below.



UK Office

Keison Products,

P.O. Box 2124, Chelmsford, Essex, CM1 3UP, England.

Tel: +44 (0)330 088 0560

Fax: +44 (0)1245 808399

Email: sales@keison.co.uk

Please note - Product designs and specifications are subject to change without notice. The user is responsible for determining the suitability of this product.