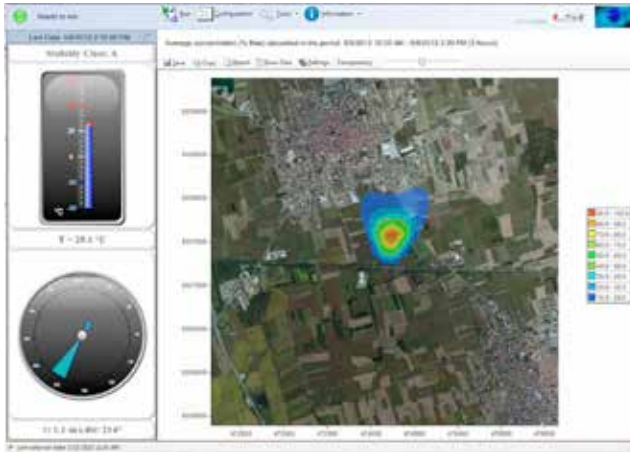


► GidasADM – Odour dispersion program (BSZ422)

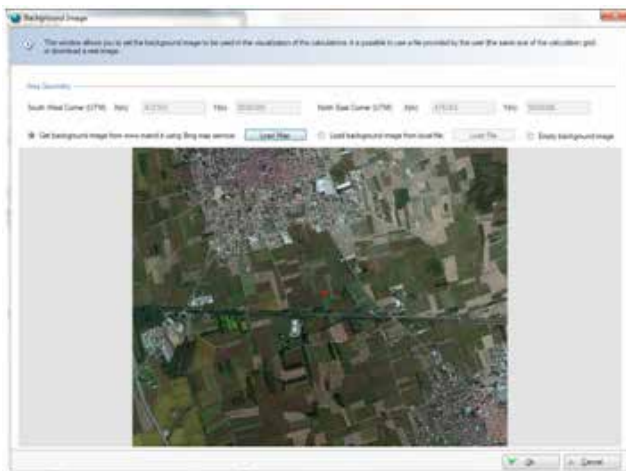
It allows calculation and report of the odours concentration (odorimetric unit or percentage in respect to the maximum obtained value) in one area.

It uses a simplified version of the WinDimula gaussian model developed by ENEA (Ente Nazionale Energie Alternative) and Maind Srl; this model is recommended by ARPA Agency. GidasADM allows a preliminary analysis of the odours concentration; it cannot be used for official and complex analysis where the results should be in compliance with the local standards and laws.



Main

- Meteorological quantities from GIDAS data base;
- Results on map and charts;
- Hourly base concentration calculation and recalculation on longer periods;
- Odour concentration results in odour unit with pick value (Peak to Mean Ratio), or in percentage respect to the maximum obtained value;
- Atmosfere class calculation;
- Air temperature, wind speed and direction instant value data display.



Configuration

- Data logger and channels selection used by the model engine: air temperature, wind speed and direction, standard deviation of the wind direction or global and net radiations;
- Odour sources selection and predicted emission values;
- Map selection.

📍 interface - background image

Average concentration (% Mac) calculated in the period: 6/6/2012 10:00 AM - 6/6/2012 2:00 PM (5 hours)

Save Copy Select Visualization Mode Dataset selected -> Average Concentration

	472143	472263	472383	472463	472563	472663	472763	472863	472963	473063
5029383	0.08	0.11	0.16	0.21	0.27	0.35	0.45	0.57	0.68	0.81
5029389	0.07	0.09	0.13	0.18	0.24	0.32	0.42	0.54	0.67	0.83
5029395	0.05	0.07	0.10	0.15	0.20	0.28	0.38	0.50	0.64	0.81
5029399	0.04	0.06	0.08	0.12	0.17	0.24	0.33	0.45	0.60	0.78
5029399	0.03	0.04	0.06	0.09	0.13	0.20	0.28	0.38	0.54	0.73
5029399	0.02	0.03	0.04	0.07	0.10	0.15	0.23	0.33	0.48	0.67
5029399	0.01	0.02	0.03	0.05	0.07	0.11	0.18	0.27	0.40	0.59
5029399	0.01	0.01	0.02	0.03	0.05	0.08	0.13	0.21	0.32	0.48
5029399	0.00	0.01	0.01	0.02	0.03	0.05	0.09	0.15	0.24	0.39
5029399	0.00	0.00	0.00	0.01	0.02	0.03	0.05	0.10	0.17	0.29
5029399	0.00	0.00	0.00	0.00	0.01	0.02	0.03	0.06	0.10	0.18
5029399	0.00	0.00	0.00	0.00	0.00	0.01	0.01	0.03	0.06	0.11
5029399	0.00	0.00	0.00	0.00	0.00	0.00	0.01	0.01	0.03	0.06
5029399	0.00	0.00	0.00	0.00	0.00	0.00	0.00	0.00	0.01	0.02
5029399	0.00	0.00	0.00	0.00	0.00	0.00	0.00	0.00	0.00	0.01
5029399	0.00	0.00	0.00	0.00	0.00	0.00	0.00	0.00	0.00	0.00
5029399	0.00	0.00	0.00	0.00	0.00	0.00	0.00	0.00	0.00	0.00
5029399	0.00	0.00	0.00	0.00	0.00	0.00	0.00	0.00	0.00	0.00

Uses

- Automatic or manual mode;
- Data report corresponding to the setup made;
- Map and results copy&paste feature;
- Report in HTML format with customized logo.



Thank you for reading this data sheet.

For pricing or for further information, please contact us at our UK Office, using the details below.



UK Office

Keison Products,

P.O. Box 2124, Chelmsford, Essex, CM1 3UP, England.

Tel: +44 (0)330 088 0560

Fax: +44 (0)1245 808399

Email: sales@keison.co.uk

Please note - Product designs and specifications are subject to change without notice. The user is responsible for determining the suitability of this product.