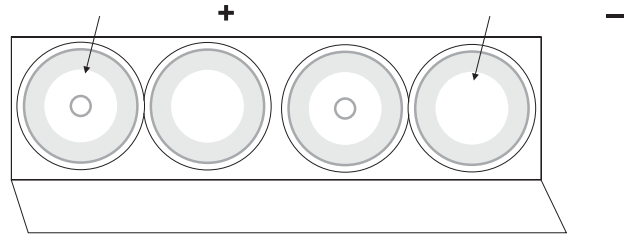


Quick Start Guide Stingray Level-Velocity Logger

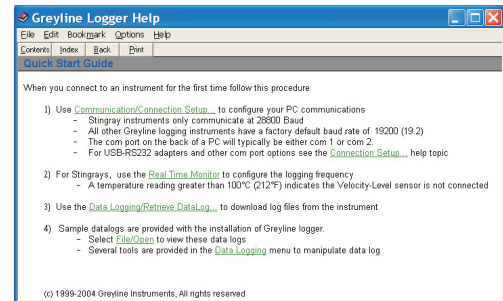
1. Install 4 Alkaline D-cell batteries (included). Allow 10 seconds for the Stingray to activate then press the button on the face of the Stingray. The LCD display will turn On. If the display does not turn On check that batteries have been correctly installed. After 1 minute the display will turn Off automatically.



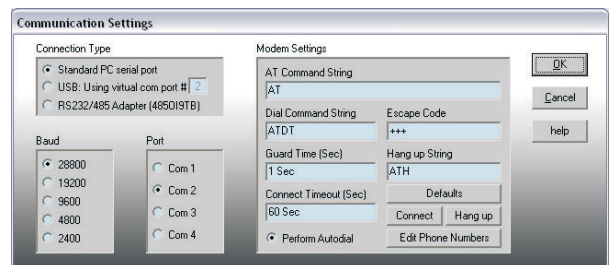
2. Install Greyline Logger software on your Windows PC or laptop computer. Insert the CD and run Setup.exe. If you encounter error messages during installation, open and review the readme.txt file on the CD.



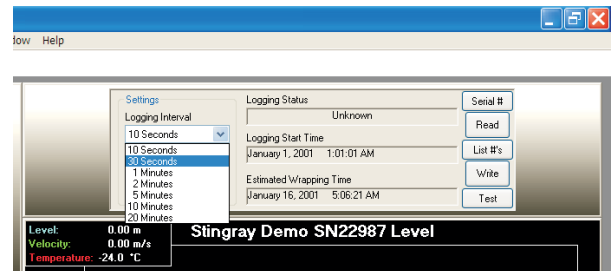
3. Connect the Stingray to your PC or laptop with the RS232 cable (included). Run Greyline Logger and review the 'Quick Start Guide' instructions which appear onscreen or select the Help drop-down menu.



4. Configure Greyline Logger software Communication Settings. Stingray baud rate is fixed at 28800 Baud. Identify the serial port on your laptop or PC. Refer to the Greyline Logger 'Help' file 'Connection Setup' for detailed instructions if you are not sure which COM port or virtual port you are connected to. Greyline Logger also supports connection through a USB/RS232 convertor or an RS232/485 adaptor.



5. Configure the logging interval through Greyline Logger software's Real Time Monitor. Select a logging interval and click "Write" to properly initialize the Stingray.





Thank you for reading this data sheet.

For pricing or for further information, please contact us at our UK Office, using the details below.



UK Office

Keison Products,

P.O. Box 2124, Chelmsford, Essex, CM1 3UP, England.

Tel: +44 (0)330 088 0560

Fax: +44 (0)1245 808399

Email: sales@keison.co.uk

Please note - Product designs and specifications are subject to change without notice. The user is responsible for determining the suitability of this product.