



**GENERAL MONITORS**  
Protection for life.

## INFRARED ACCESSORIES

### Calibration Kit (P/N 32548-x)

The portable purge calibrator is a compact, accurate and safe system containing a non-explosive gas concentration. The lecture bottle is filled with a standard 50% LEL mixture of gas/air. Using a known gas/air mixture reduces the likelihood of error in field calibration. The hose and cup adapter (P/N 32554-1) that are included allow for quick calibrations and gas checks. Premixed calibration gases at approximately 50% LEL are available in lecture bottles.

Butane	$C_4H_{10}$
Ethane	$C_2H_6$
Hexane	$C_6H_{14}$
Methane	$CH_4$
Pentane	$C_5H_{12}$
Propane	$C_3H_8$

Spare bottles containing these gases may be ordered. Methane lecture bottles may be returned to General Monitors for refilling. Please consult your local General Monitors representative for further information.



### Splash Guard (P/N 32545-1)

The IR Splash Guard protects the sensor cavity from water spray, wind, and dust.



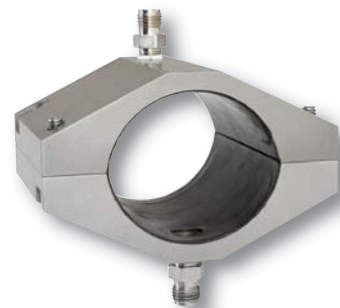
### Rain Guard (P/N 31545-1)

The IR Rain Guard is recommended for installation where the IR detector is directly exposed to the elements or where frequent drenching with water is practiced, such as offshore platforms.



### Flow Block (P/N 31420-1)

The flow block assembly can be used to connect the IR400 to a gas sampling system.



### Remote Gas Calibrator (P/N 32541-1)

The remote gas calibrator, RGC-IR, is designed to be permanently installed on an IR gas detector. The RGC-IR provides protection from outside elements and allows the user to apply calibration gas (@ 50 psi) to the detector from a remote source. See RGC-IR manual for specifications.





# INFRARED ACCESSORIES

## Zero Switch Junction Box (P/N 31305 – CSA, P/N 31421 ATEX)

The junction box used with the IR400 is fitted with or without a zero switch for baseline zeroing or calibration. P/N 31305-1 is pictured below with zero switch.



## Duct Mount Junction Box

(P/N 31306-1 – US manufactured, P/N 31424-1 – Ireland manufactured)

The Duct Mount Junction Box is used to mount IR detectors in HVAC systems, turbine intakes, and other air handling applications (p/n 31306-1 pictured).



*Specifications subject to change without notice.*

*Represented by:*



Thank you for reading this data sheet.

For pricing or for further information, please contact us at our UK Office, using the details below.



**UK Office**

**Keison Products,**

**P.O. Box 2124, Chelmsford, Essex, CM1 3UP, England.**

**Tel: +44 (0)330 088 0560**

**Fax: +44 (0)1245 808399**

**Email: [sales@keison.co.uk](mailto:sales@keison.co.uk)**

Please note - Product designs and specifications are subject to change without notice. The user is responsible for determining the suitability of this product.